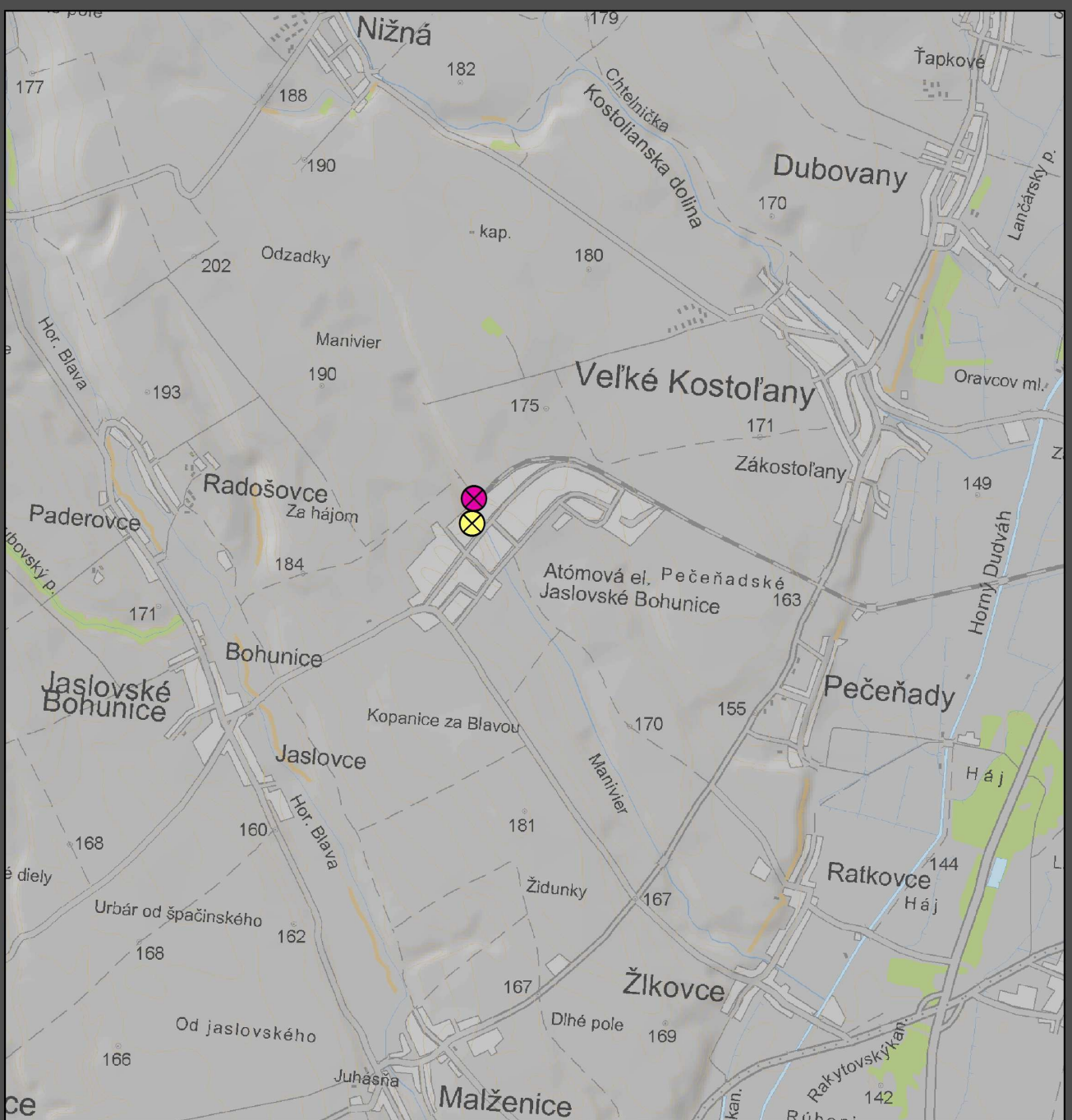
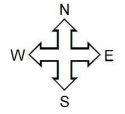


# Location for the proposed activity (options 1 and 2)

-  roads
-  railway track
-  settlements
-  vegetation
-  watrecourses
-  water bodies
-  altimetric points

proposed activity

-  IR RAW - option 1
-  IR RAW - option 2



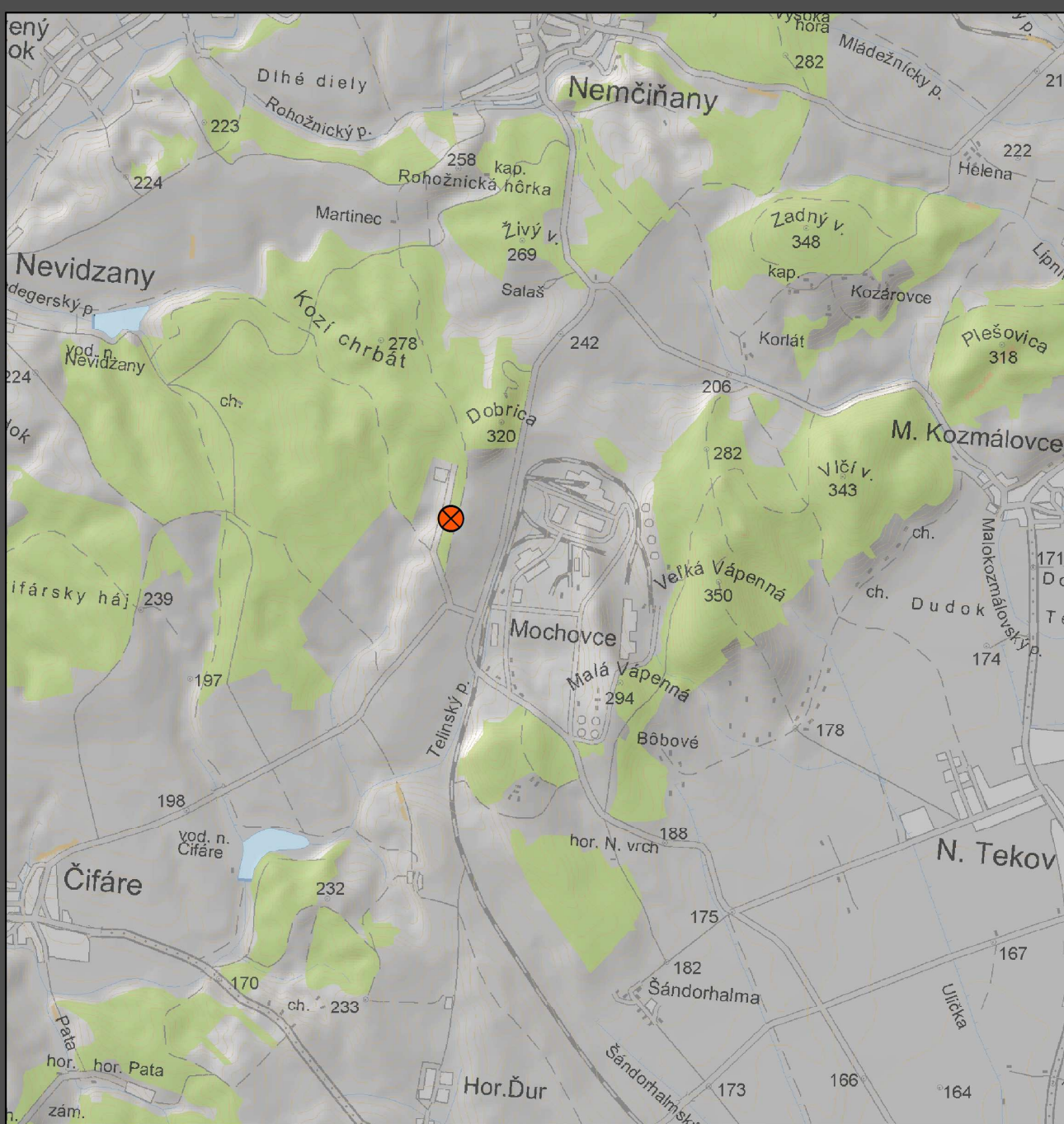
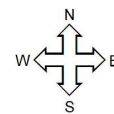
Based on: general map of Slovakia, 1:50 000

0 1 2 4 km

## Location for the proposed activity (option 3)

-  roads
-  railway track
-  settlements
-  vegetation
-  watrecourses
-  water bodies
-  altimetric points

proposed activity








 IR RAW - option 3

Based on: general map of Slovakia, 1:50 000





0 1 2 4 km

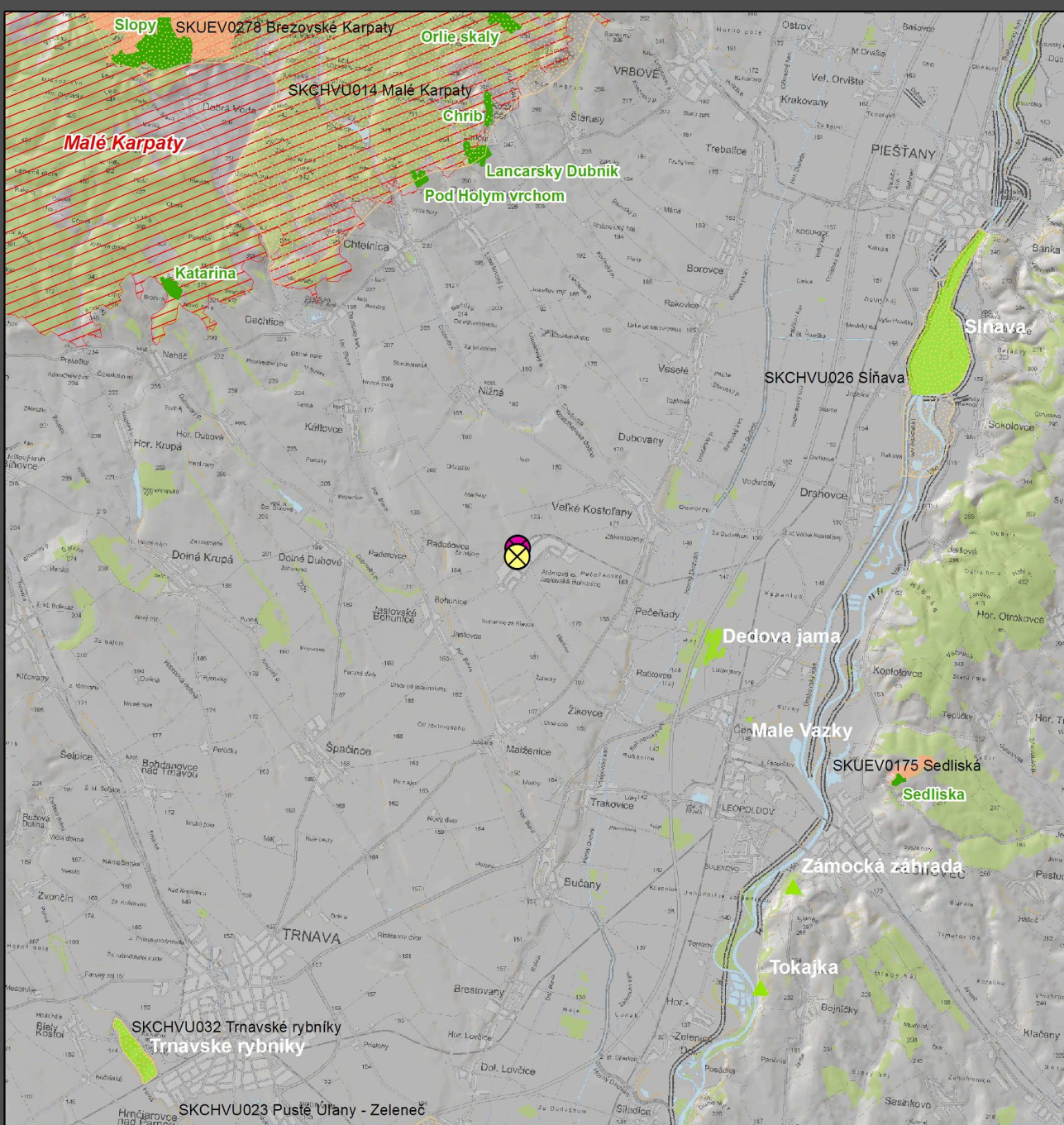
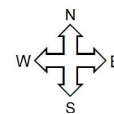


Protected areas in the wider surroundings of the affected territory (options 1 and 2)

-  roads
-  railway track
-  settlements
-  vegetation
-  watercourses
-  water bodies
-  altimetric points

-  protected range
-  nature reserve
-  national nature reserve
-  landscape preservation area
-  area of Community importance
-  protected birds area

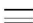






-  protected range
-  protected tree
-  IR RAW - option 1
-  IR RAW - option 2






Based on: general map of Slovakia, 1:50 000

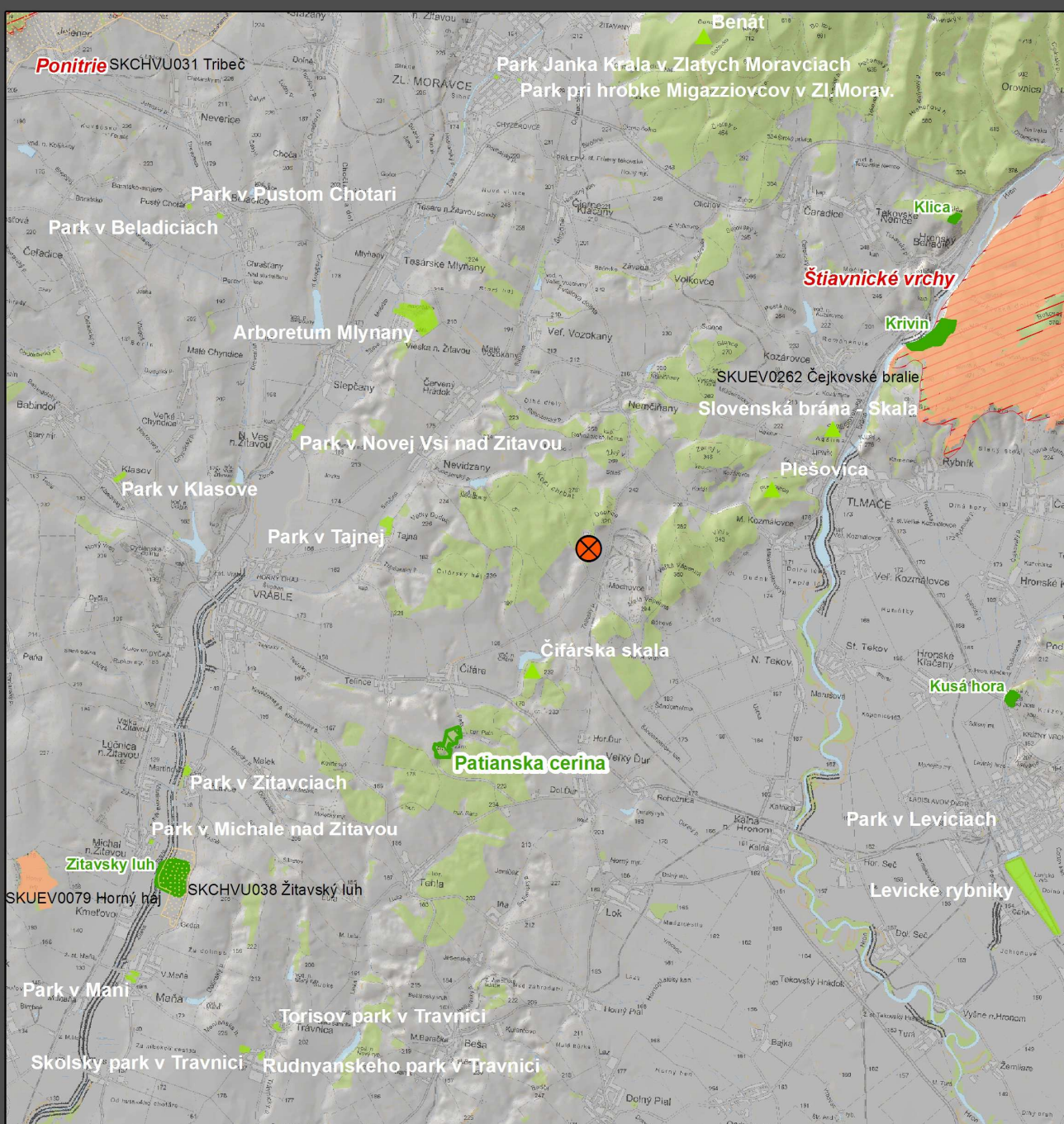
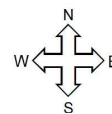


Protected areas in the wider surroundings of the affected territory (option 3)

-  roads
-  railway track
-  settlements
-  vegetation
-  watercourses
-  water bodies
-  altimetric points

-  protected range
-  nature reserve
-  national nature reserve
-  landscape preservation area
-  area of Community importance
-  protected birds area

-  protected range
-  protected tree
-  IR RAW - option 3



Based on: general map of Slovakia, 1:50 000

