

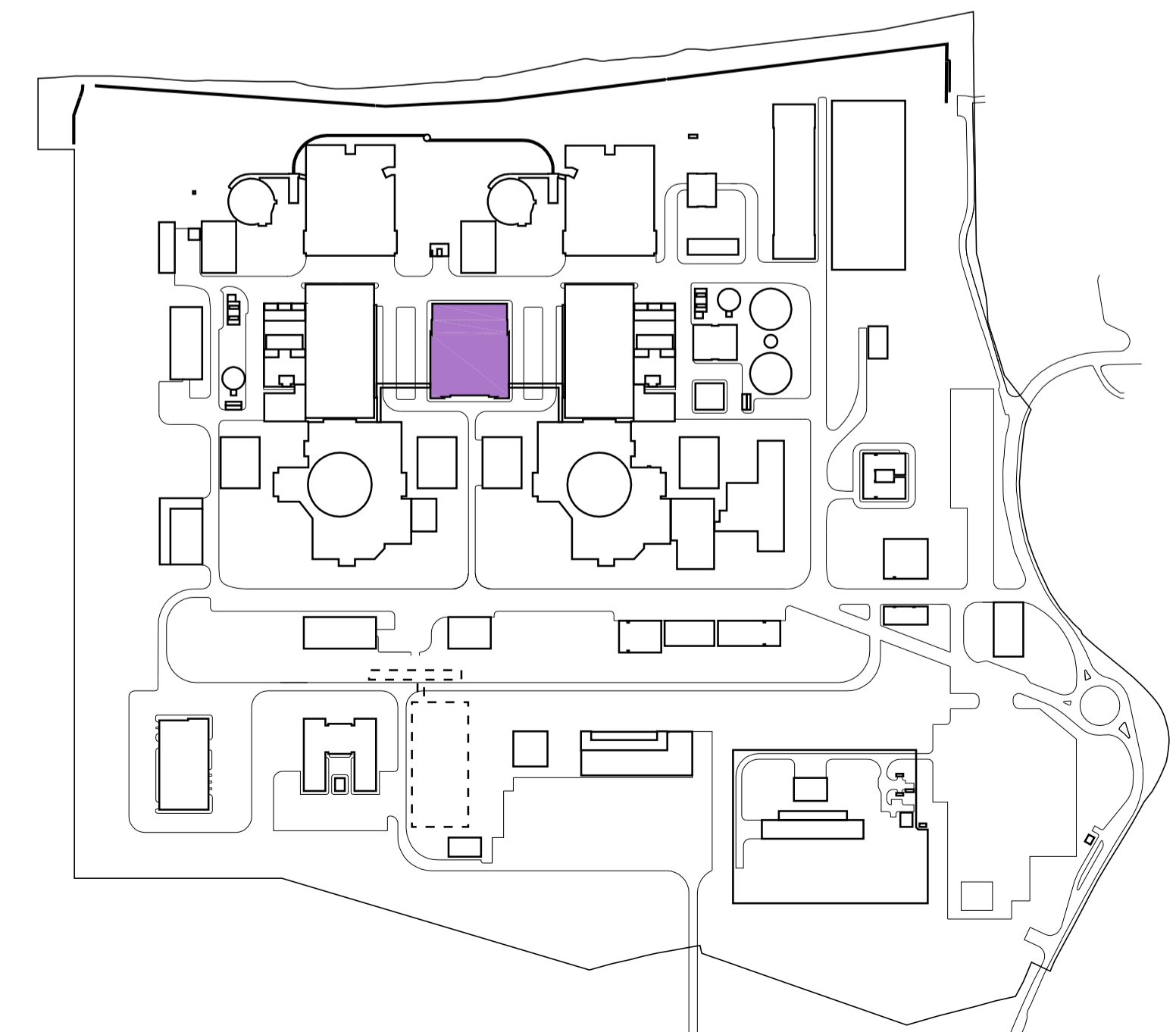


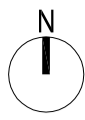
HINKLEY POINT C

PLANS
DOC REF - 2.4
OCTOBER 2011

OPERATIONS

(DRAWINGS FOR APPROVAL)





All internal layouts and uses are shown for illustrative purposes only and are not for determination

NOTES:

Materials Key:

Vertical Enclosure - Wall

- 1 Concrete / render finishes
- 1.1 In-situ concrete
- 1.2 Pre-cast concrete
- 1.3 Render finish

- 2 Cladding
- 2.1 Aluminium standing seam
- 2.2 Aluminium panels
- 2.3 Aluminium planks
- 2.4 Profiled steel panels
- 2.5 Flat steel panels
- 2.6 Fibre cement cladding
- 2.7 Glass reinforced plastic

- 3 Glazing / translucent materials
- 3.1 Cast glass c-channel
- 3.2 Frameless glazing
- 3.3 Framed glazing
- 3.4 Opaque glazed spandrel panel
- 3.5 Polycarbonate translucent cladding

- 4 External wall features
- 4.1 Aluminium trims, copings and casings
- 4.2 Aluminium louvres
- 4.3 Glass louvres
- 4.4 Aluminium brise-soleil
- 4.5 Glass brise-soleil
- 4.6 Mesh expanded metal panels
- 4.7 Fencing
- 4.8 Barbed tape
- 4.9 Retractable steel shutters

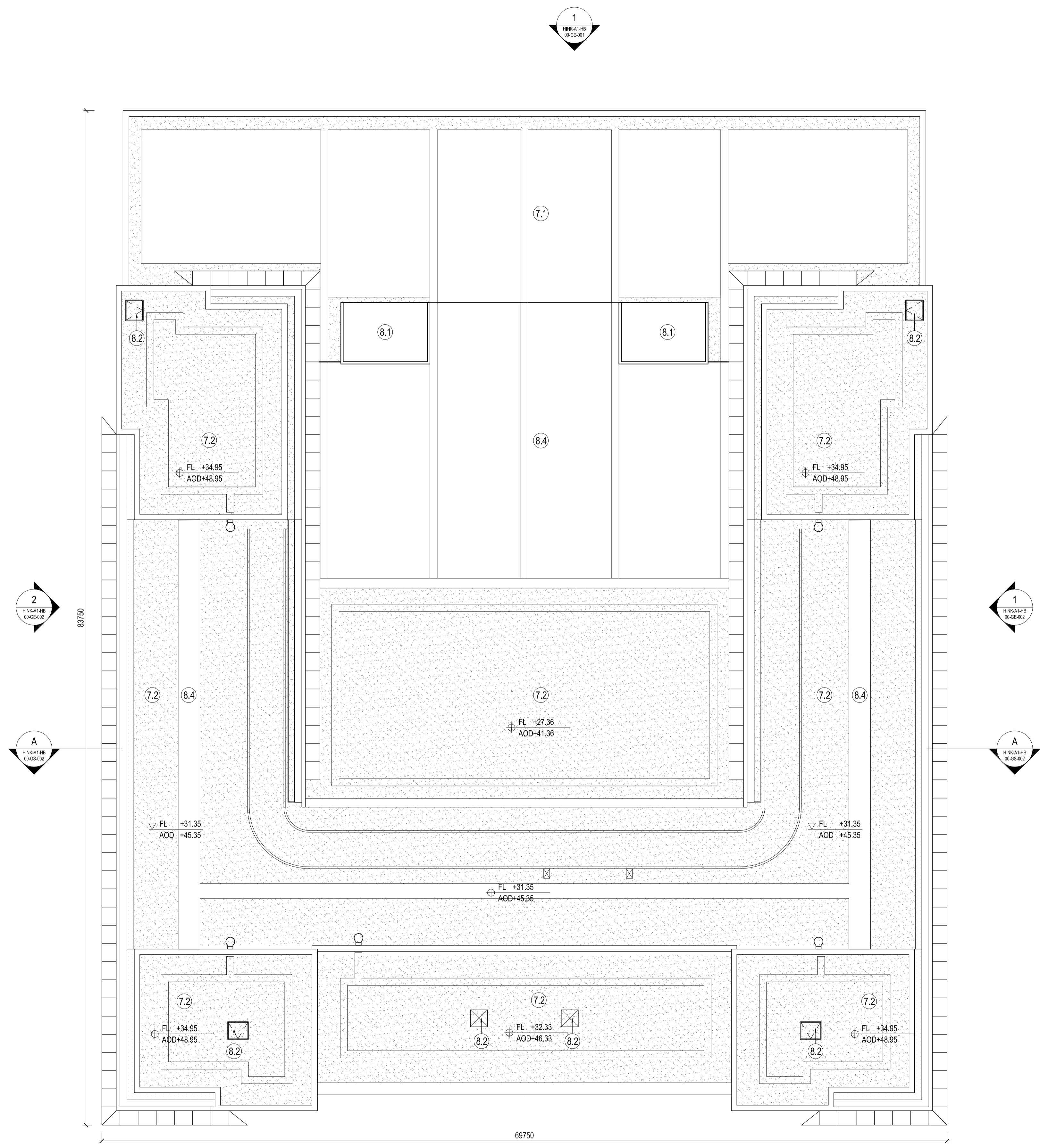
- 5 Doors
- 5.1 Metal door
- 5.2 Metal louvre door
- 5.3 Glazed door
- 5.4 Access gates

- 6 Window / metalwork accessories
- 6.1 External fabric blinds
- 6.2 Cavity venetian blinds
- 6.3 Glazed balustrade
- 6.4 Metal stairs and ladders

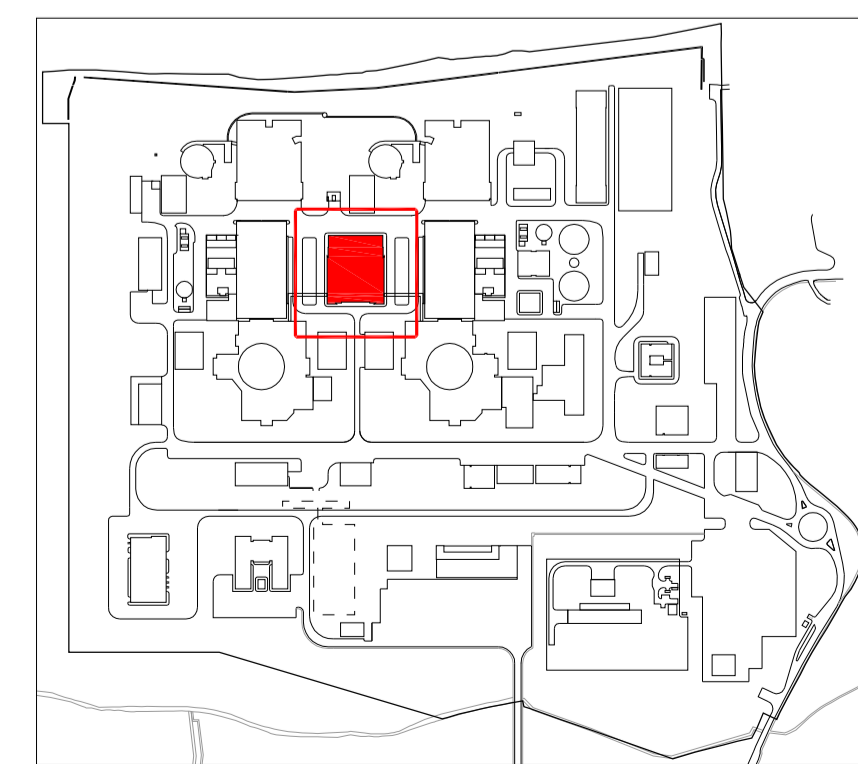
Horizontal Enclosure - Roof

- 7 Roofing
- 7.1 Sedum roof
- 7.2 Ballast
- 7.3 Standing seam roof
- 7.4 Concrete roof

- 8 Roofing Accessories
- 8.1 Roof light
- 8.2 Roof vents and hatches
- 8.3 Metal cappings and copings
- 8.4 Paving
- 8.5 PVs and solar panels
- 8.6 Timber decking



1 ROOF PLAN
SCALE 1:200



Hinkley Point C Site Key Plan - NTS

REVISION	DATE	DRAWN	CHECKED	REASONS FOR REVISION COMMENTS	APPROVED
01	SEPT 2011	YRM	YRM	FOR IPC SUBMISSION	NNB



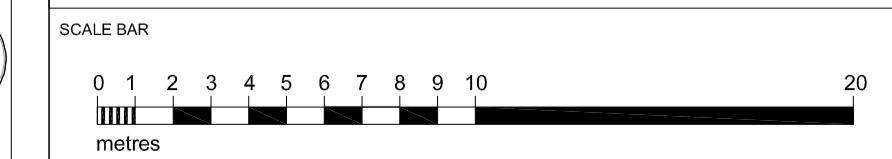
HINKLEY POINT C

Hinkley Point C Development Site
Operational Service Centre

Roof Plan
Regulation 5(2)(o)

PROJECT DRAWING REFERENCE NO.	REVISION	SCALE	DATE
HNK-A1-HB-00-GP-090	01	1:200 @ A1	SEPT 2011

Application Drawing - Detail (for Approval)



- PROTECTIVE MARKING REQUIRED
- NOT PROTECTIVELY MARKED

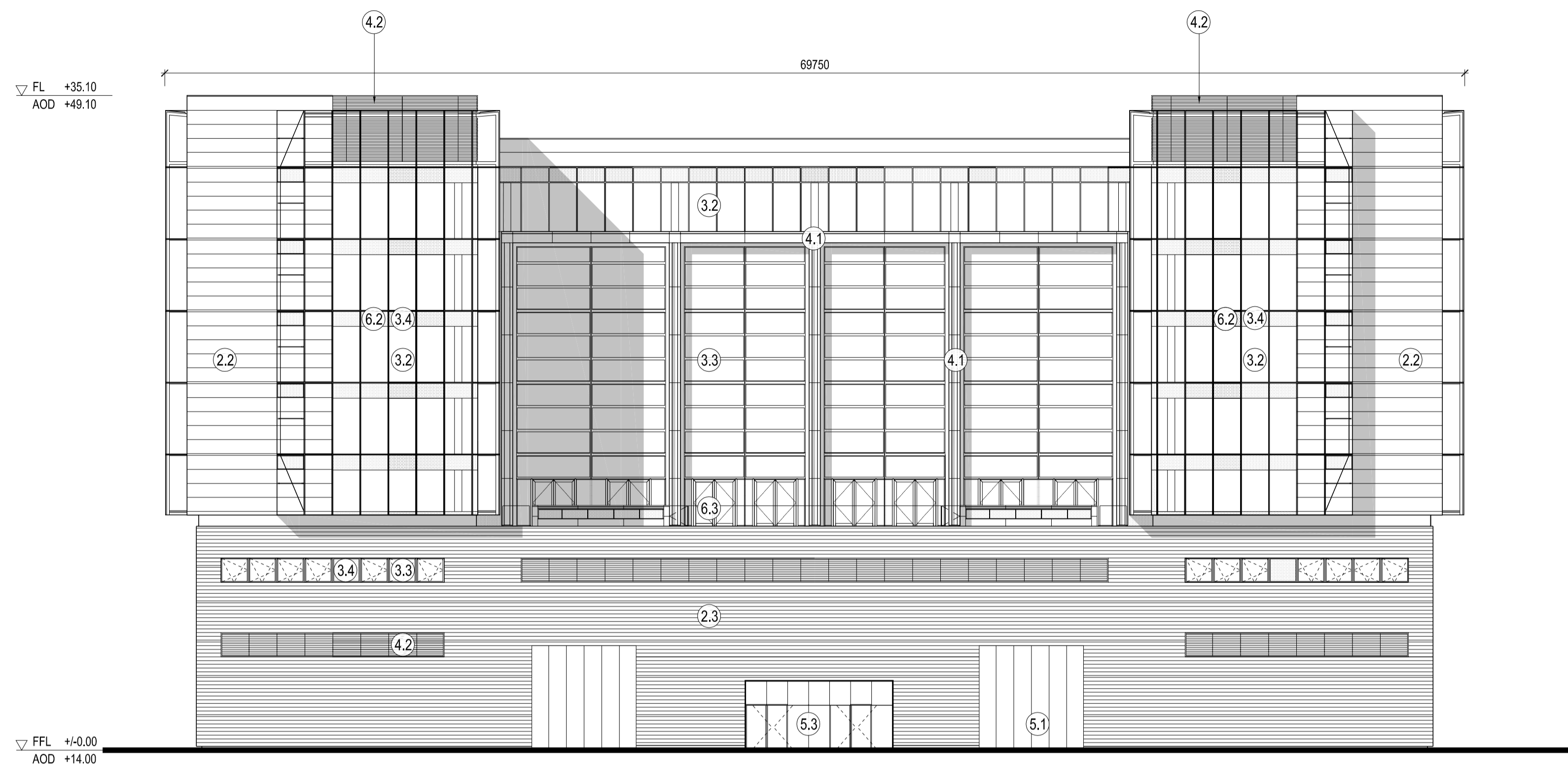
All internal layouts and uses are shown for illustrative purposes only and are not for determination

NOTES:

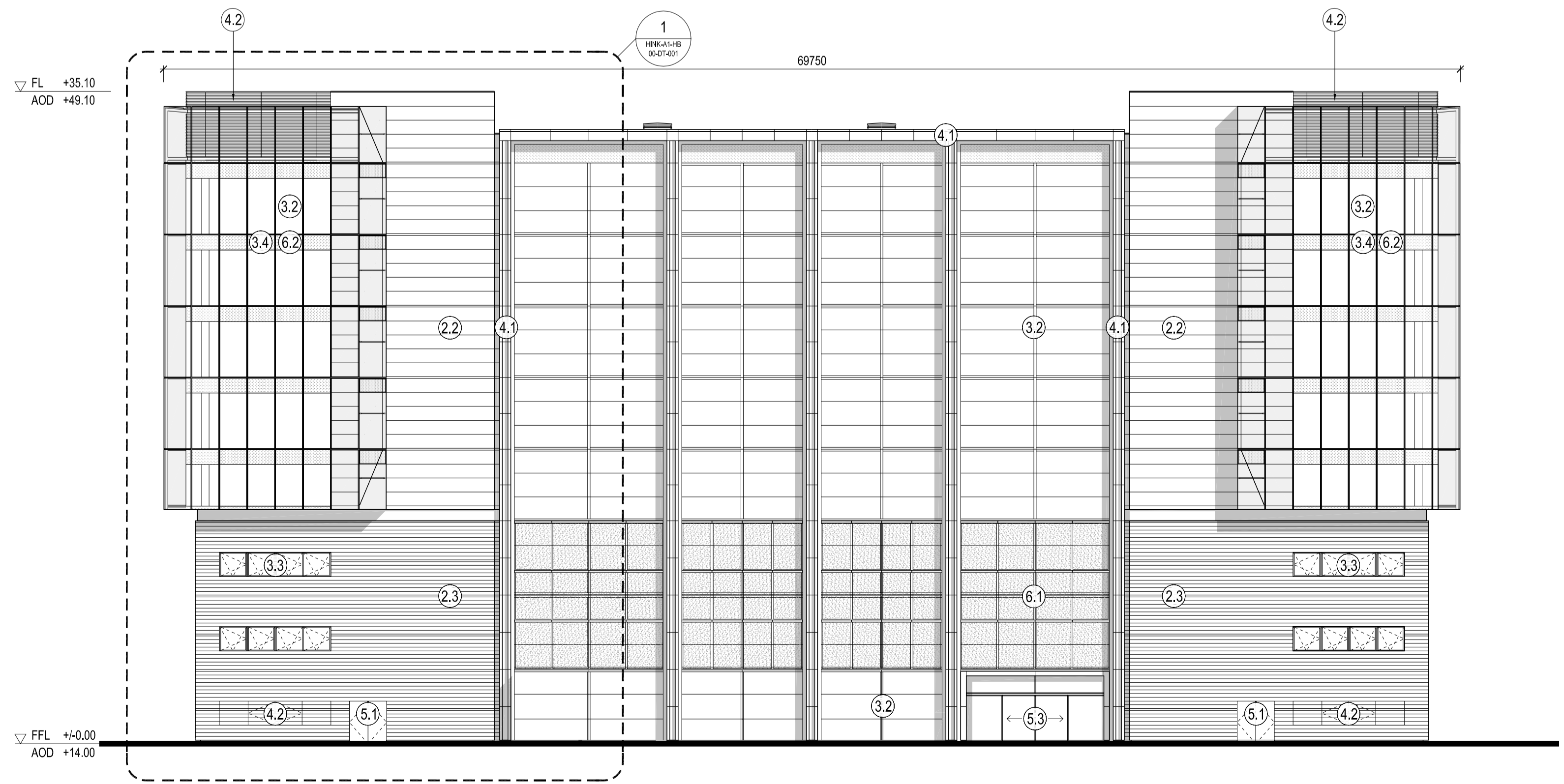
Materials Key:

Vertical Enclosure - Wall

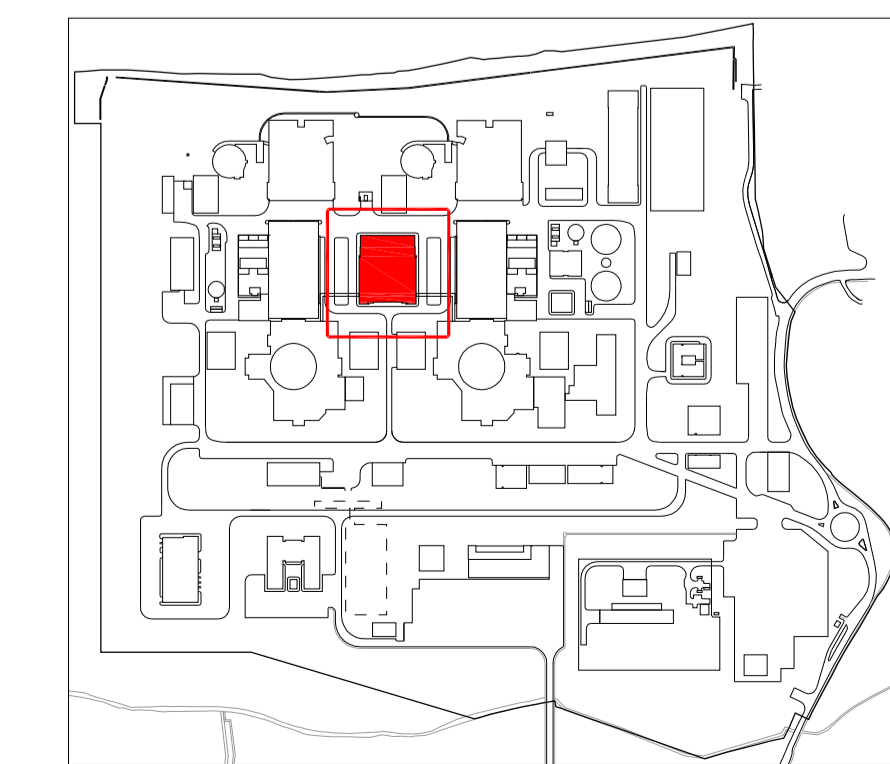
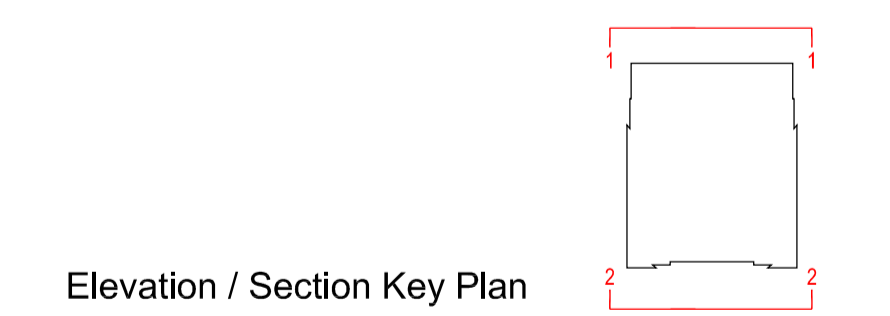
- | | |
|--|---|
| 1 Concrete / render finishes | 5 Doors |
| 1.1 In-situ concrete | 5.1 Metal door |
| 1.2 Pre-cast concrete | 5.2 Metal louvre door |
| 1.3 Render finish | 5.3 Glazed door |
| | 5.4 Access gates |
| 2 Cladding | 6 Window / metalwork accessories |
| 2.1 Aluminium standing seam | 6.1 External fabric blinds |
| 2.2 Aluminium panels | 6.2 Cavity venetian blinds |
| 2.3 Aluminium planks | 6.3 Glazed balustrade |
| 2.4 Profiled steel panels | 6.4 Metal stairs and ladders |
| 2.5 Flat steel panels | |
| 2.6 Fibre cement cladding | |
| 2.7 Glass reinforced plastic | |
| 3 Glazing / translucent materials | Horizontal Enclosure - Roof |
| 3.1 Cast glass c-channel | 7 Roofing |
| 3.2 Frameless glazing | 7.1 Sedum roof |
| 3.3 Framed glazing | 7.2 Ballast |
| 3.4 Opaque glazed spandrel panel | 7.3 Standing seam roof |
| 3.5 Polycarbonate translucent cladding | 7.4 Concrete roof |
| 4 External wall features | 8 Roofing Accessories |
| 4.1 Aluminium trims, copings and casings | 8.1 Roof light |
| 4.2 Aluminium louvres | 8.2 Roof vents and hatches |
| 4.3 Glass louvres | 8.3 Metal cappings and copings |
| 4.4 Aluminium brise-soleil | 8.4 Paving |
| 4.5 Glass brise-soleil | 8.5 PVs and solar panels |
| 4.6 Mesh expanded metal panels | 8.6 Timber decking |
| 4.7 Fencing | |
| 4.8 Barbed tape | |
| 4.9 Retractable steel shutters | |



1 NORTH ELEVATION
SCALE 1:200



2 SOUTH ELEVATION
SCALE 1:200



Hinkley Point C Site Key Plan - NTS

REVISION	DATE	DRAWN	CHECKED	FOR IPC SUBMISSION	REASONS FOR REVISION/ COMMENTS	APPROVED
01	SEPT 2011	YRM	YRM	FOR IPC SUBMISSION		NNB



HINKLEY POINT C

DRAWING TITLE
Hinkley Point C Development Site
Operational Service Centre

North & South Elevations
Regulation 5(2)(o)

PROJECT DRAWING REFERENCE NO.	REVISION	SCALE	DATE
HINK-A1-HB-00-GE-001	01	1:200 @ A1	SEPT 2011

DOCUMENT
Application Drawing - Detail (for Approval)



- DRAWING SECURITY CLASSIFICATION
- PROTECTIVE MARKING REQUIRED
 - NOT PROTECTIVELY MARKED

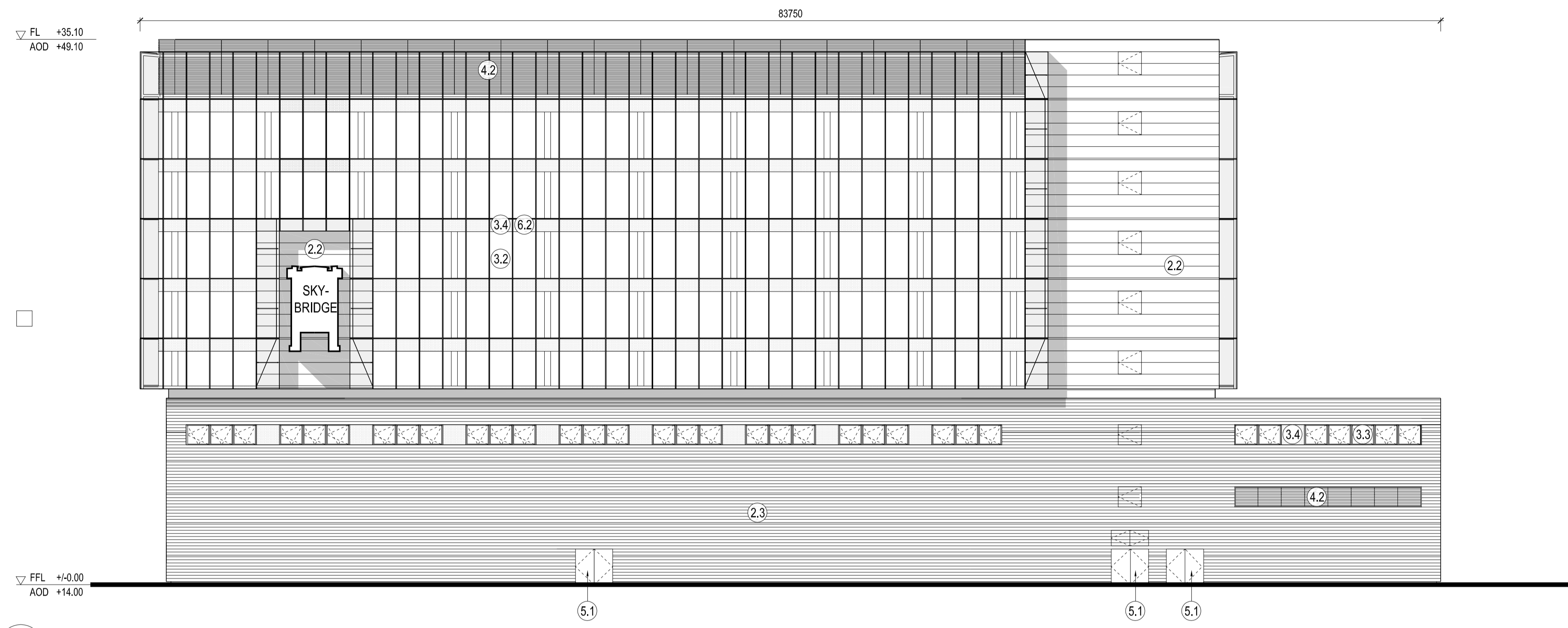
All internal layouts and uses are shown for illustrative purposes only and are not for determination

NOTES:

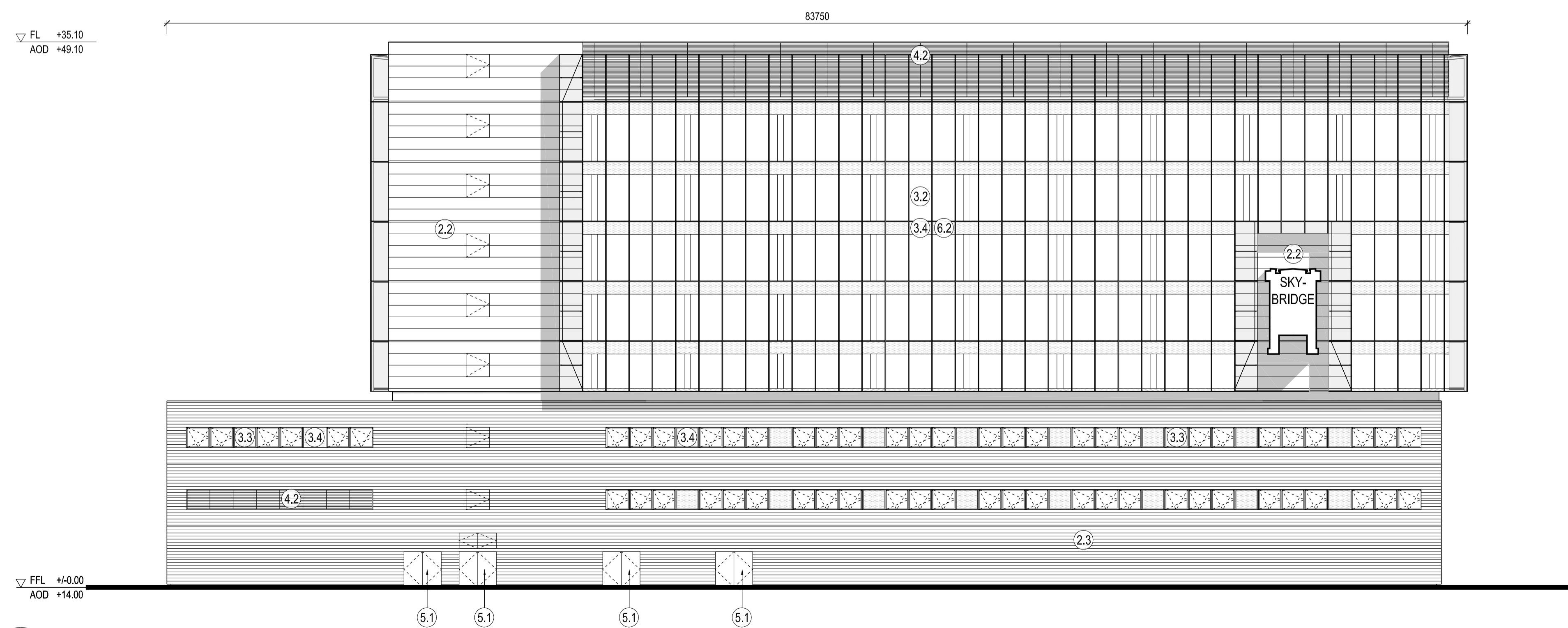
Materials Key:

Vertical Enclosure - Wall

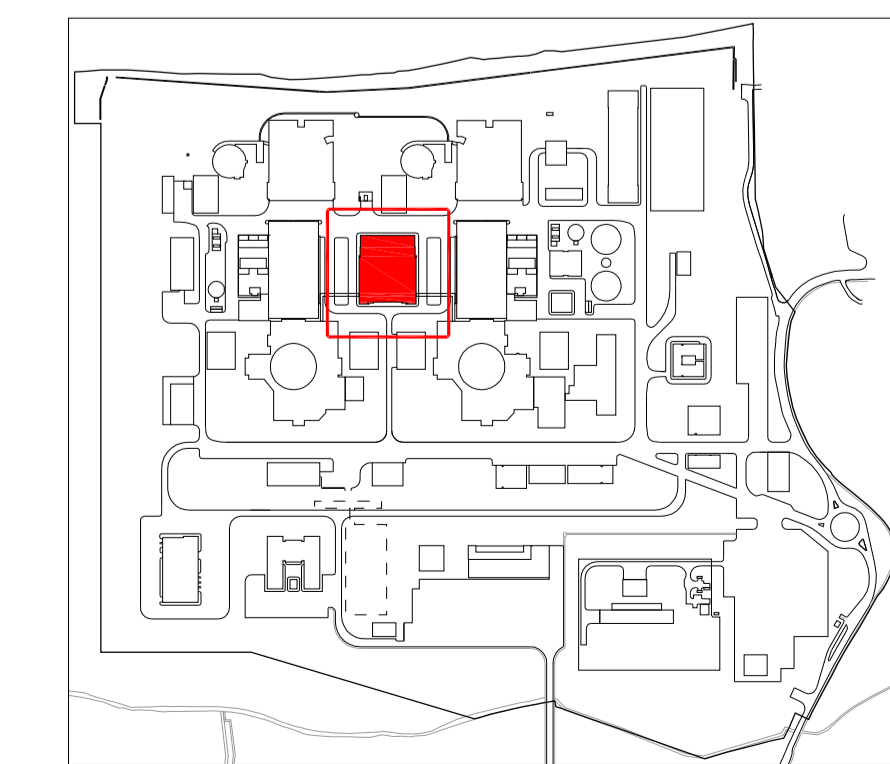
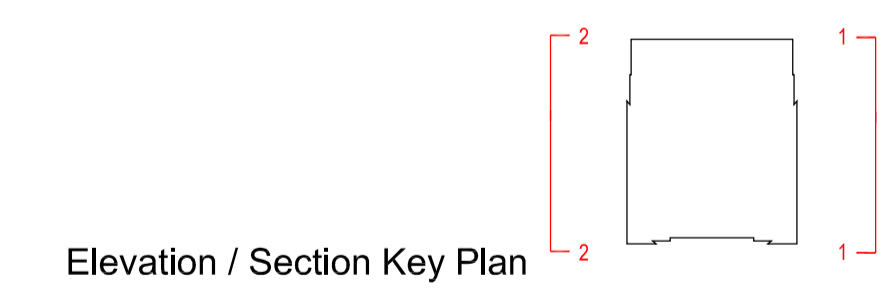
- | | |
|--|---|
| 1 Concrete / render finishes | 5 Doors |
| 1.1 In-situ concrete | 5.1 Metal door |
| 1.2 Pre-cast concrete | 5.2 Metal louvre door |
| 1.3 Render finish | 5.3 Glazed door |
| | 5.4 Access gates |
| 2 Cladding | 6 Window / metalwork accessories |
| 2.1 Aluminium standing seam | 6.1 External fabric blinds |
| 2.2 Aluminium panels | 6.2 Cavity venetian blinds |
| 2.3 Aluminium planks | 6.3 Glazed balustrade |
| 2.4 Profiled steel panels | 6.4 Metal stairs and ladders |
| 2.5 Flat steel panels | |
| 2.6 Fibre cement cladding | |
| 2.7 Glass reinforced plastic | |
| 3 Glazing / translucent materials | Horizontal Enclosure - Roof |
| 3.1 Cast glass c-channel | 7 Roofing |
| 3.2 Frameless glazing | 7.1 Sedum roof |
| 3.3 Framed glazing | 7.2 Ballast |
| 3.4 Opaque glazed spandrel panel | 7.3 Standing seam roof |
| 3.5 Polycarbonate translucent cladding | 7.4 Concrete roof |
| 4 External wall features | 8 Roofing Accessories |
| 4.1 Aluminium trims, copings and casings | 8.1 Roof light |
| 4.2 Aluminium louvres | 8.2 Roof vents and hatches |
| 4.3 Glass louvres | 8.3 Metal cappings and copings |
| 4.4 Aluminium brise-soleil | 8.4 Paving |
| 4.5 Glass brise-soleil | 8.5 PVs and solar panels |
| 4.6 Mesh expanded metal panels | 8.6 Timber decking |
| 4.7 Fencing | |
| 4.8 Barbed tape | |
| 4.9 Retractable steel shutters | |



1 EAST ELEVATION
SCALE 1:200



2 WEST ELEVATION
SCALE 1:200



Hinkley Point C Site Key Plan - NTS

REVISION	DATE	DRAWN	CHECKED	REASONS FOR REVISION/ COMMENTS	APPROVED
01	SEPT 2011	YRM	YRM	FOR IPC SUBMISSION	NNB



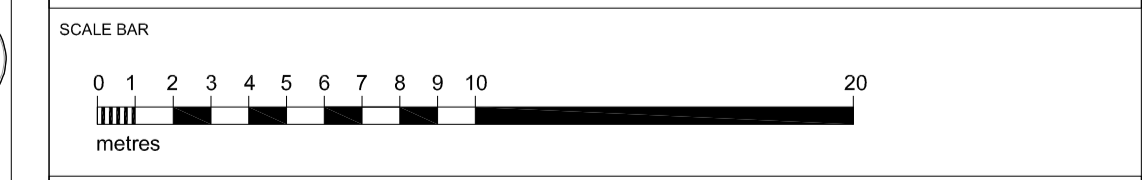
HINKLEY POINT C

DRAWING TITLE
Hinkley Point C Development Site
Operational Service Centre

East & West Elevations
Regulation 5(2)(o)

PROJECT DRAWING REFERENCE NO.	REVISION	SCALE	DATE
HINK-A1-HB-00-GE-002	01	1:200 @ A1	SEPT 2011

DOCUMENT
Application Drawing - Detail (for Approval)



- DRAWING SECURITY CLASSIFICATION
- PROTECTIVE MARKING REQUIRED
 - NOT PROTECTIVELY MARKED

All internal layouts and uses are shown for illustrative purposes only and are not for determination

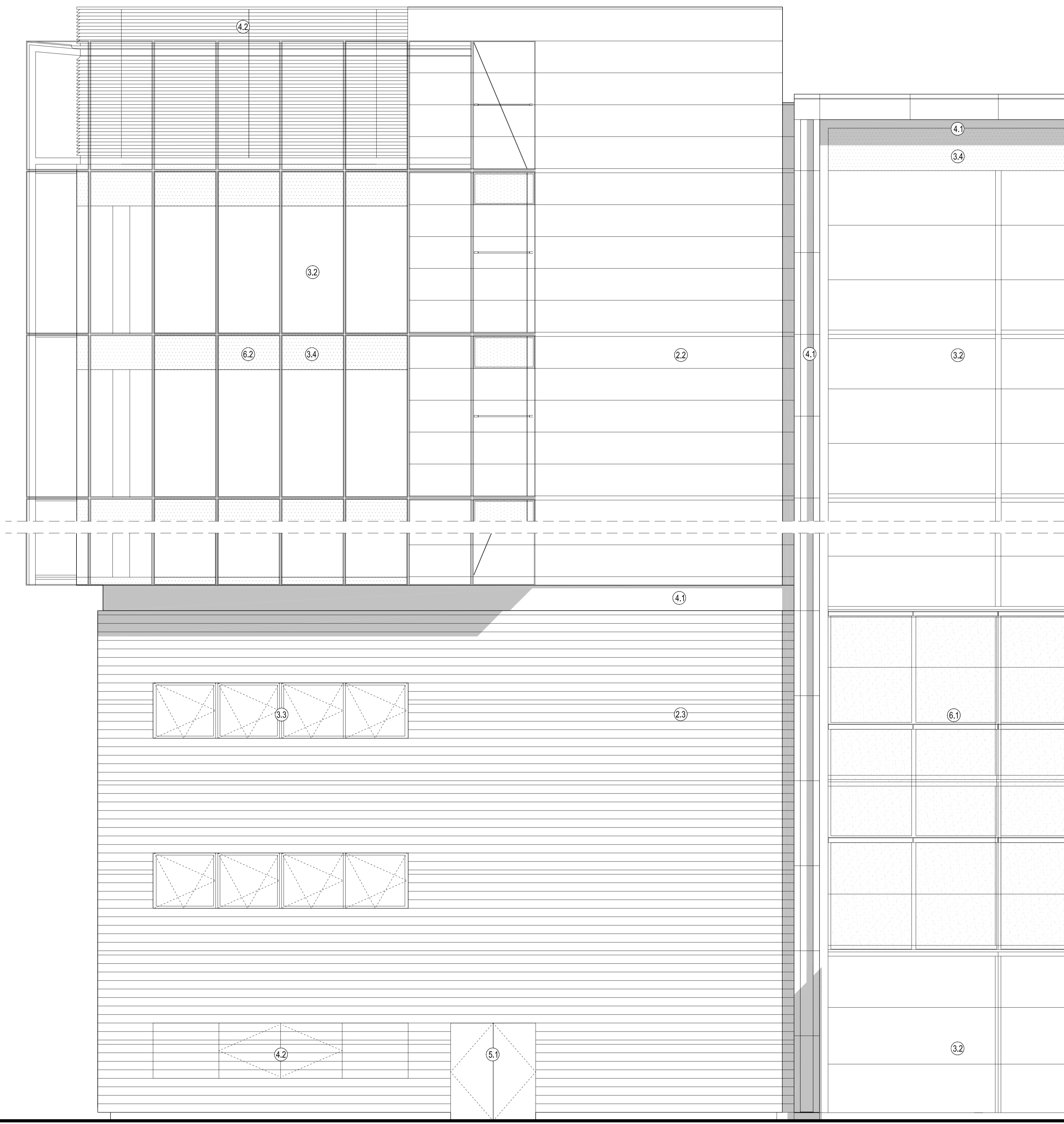
NOTES:

Materials Key:

Vertical Enclosure - Wall

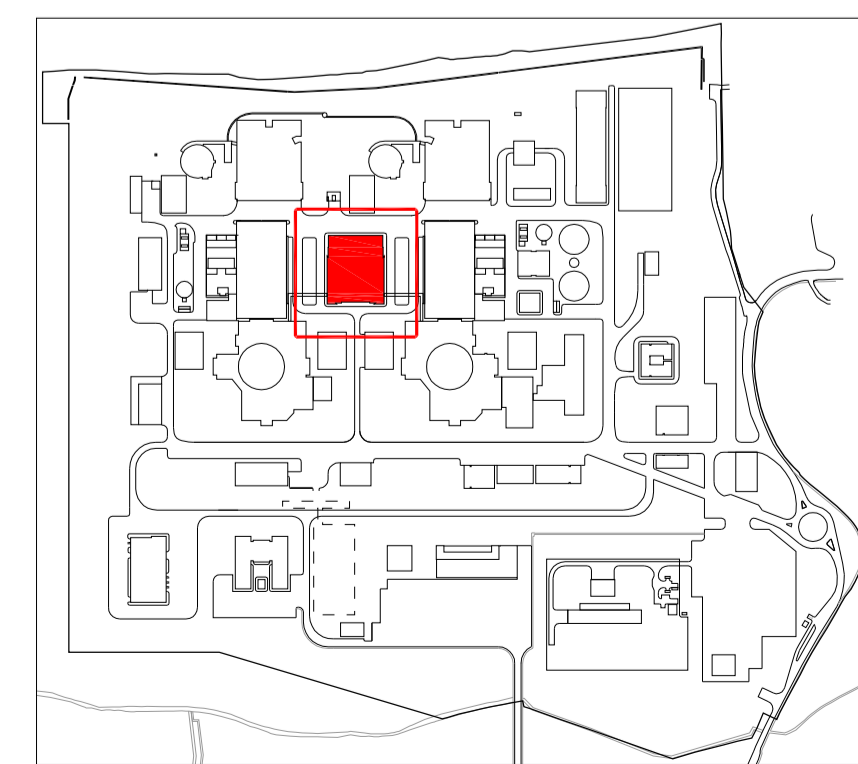
- | | |
|--|---|
| 1 Concrete / render finishes | 5 Doors |
| 1.1 In-situ concrete | 5.1 Metal door |
| 1.2 Pre-cast concrete | 5.2 Metal louvre door |
| 1.3 Render finish | 5.3 Glazed door |
| | 5.4 Access gates |
| 2 Cladding | 6 Window / metalwork accessories |
| 2.1 Aluminium standing seam | 6.1 External fabric blinds |
| 2.2 Aluminium panels | 6.2 Cavity venetian blinds |
| 2.3 Aluminium planks | 6.3 Glazed balustrade |
| 2.4 Profiled steel panels | 6.4 Metal stairs and ladders |
| 2.5 Flat steel panels | |
| 2.6 Fibre cement cladding | |
| 2.7 Glass reinforced plastic | |
| 3 Glazing / translucent materials | Horizontal Enclosure - Roof |
| 3.1 Cast glass c-channel | 7 Roofing |
| 3.2 Frameless glazing | 7.1 Sedum roof |
| 3.3 Framed glazing | 7.2 Ballast |
| 3.4 Opaque glazed spandrel panel | 7.3 Standing seam roof |
| 3.5 Polycarbonate translucent cladding | 7.4 Concrete roof |
| 4 External wall features | 8 Roofing Accessories |
| 4.1 Aluminium trims, copings and casings | 8.1 Roof light |
| 4.2 Aluminium louvres | 8.2 Roof vents and hatches |
| 4.3 Glass louvres | 8.3 Metal cappings and copings |
| 4.4 Aluminium brise-soleil | 8.4 Paving |
| 4.5 Glass brise-soleil | 8.5 PVs and solar panels |
| 4.6 Mesh expanded metal panels | 8.6 Timber decking |
| 4.7 Fencing | |
| 4.8 Barbed tape | |
| 4.9 Retractable steel shutters | |

FL +35.10
AOD +49.10



FFL 0.00
AOD +14.00

1 DETAIL - PART SOUTH ELEVATION
SCALE 1:50



Hinkley Point C Site Key Plan - NTS

REVISION	DATE	DRAWN	CHECKED	REASONS FOR REVISION/ COMMENTS	APPROVED
01	SEPT 2011	YRM	YRM	FOR IPC SUBMISSION	NNB



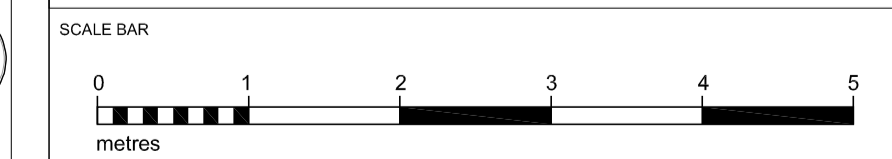
HINKLEY POINT C

DRAWING TITLE
Hinkley Point C Development Site
Operational Service Centre

Part Elevation - Detail
Regulation 5(2)(o)

PROJECT DRAWING REFERENCE NO.	REVISION	SCALE	DATE
HINK-A1-HB-00-DT-001	01	1:50 @ A1	SEPT 2011

DOCUMENT
Application Drawing - Detail (for Approval)



- DRAWING SECURITY CLASSIFICATION
- PROTECTIVE MARKING REQUIRED
 - NOT PROTECTIVELY MARKED