



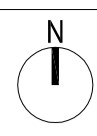
HINKLEY POINT C

PLANS
DOC REF - 2.4
OCTOBER 2011

PUBLIC & TRAINING

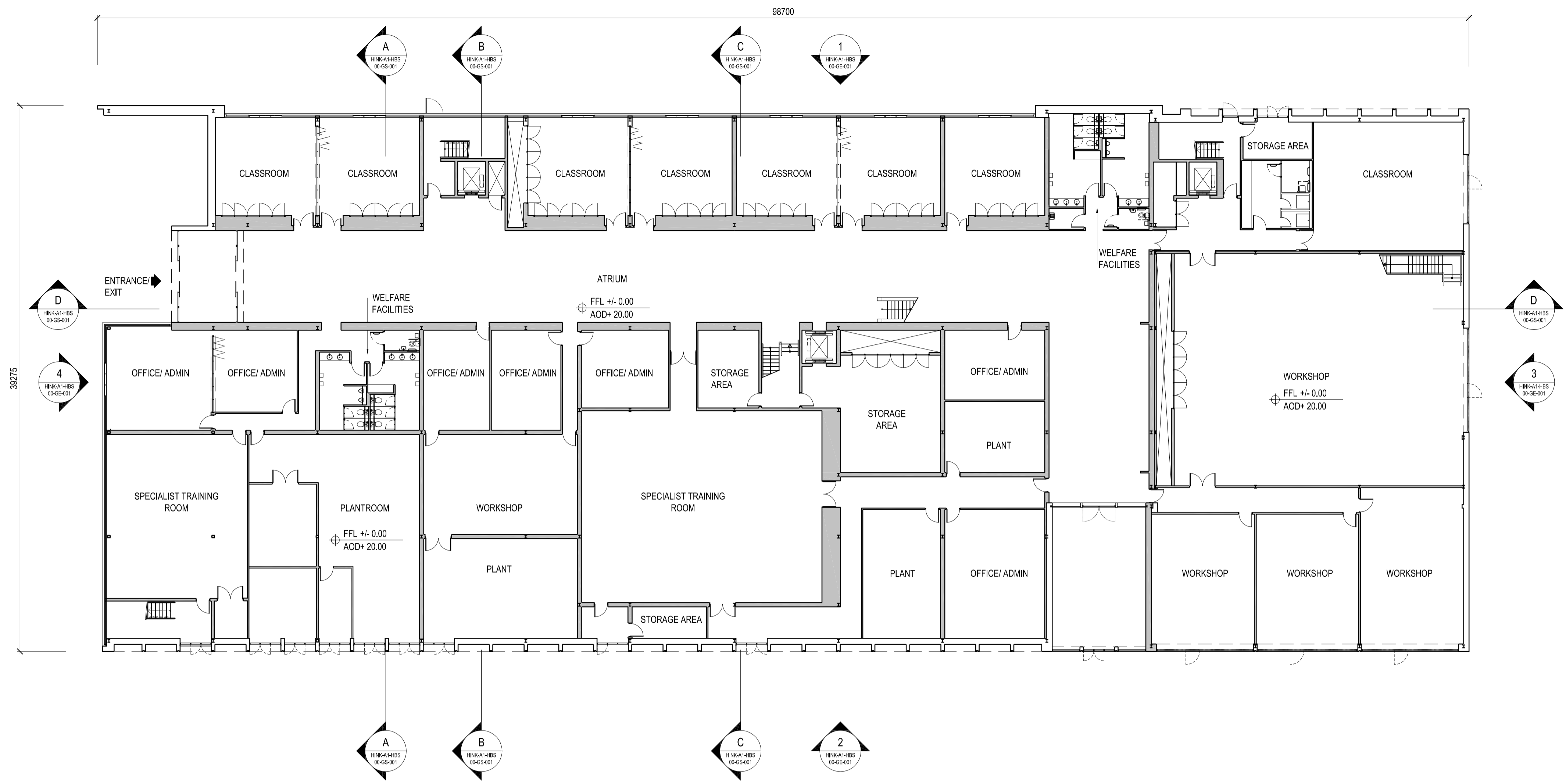
(DRAWINGS NOT FOR APPROVAL)



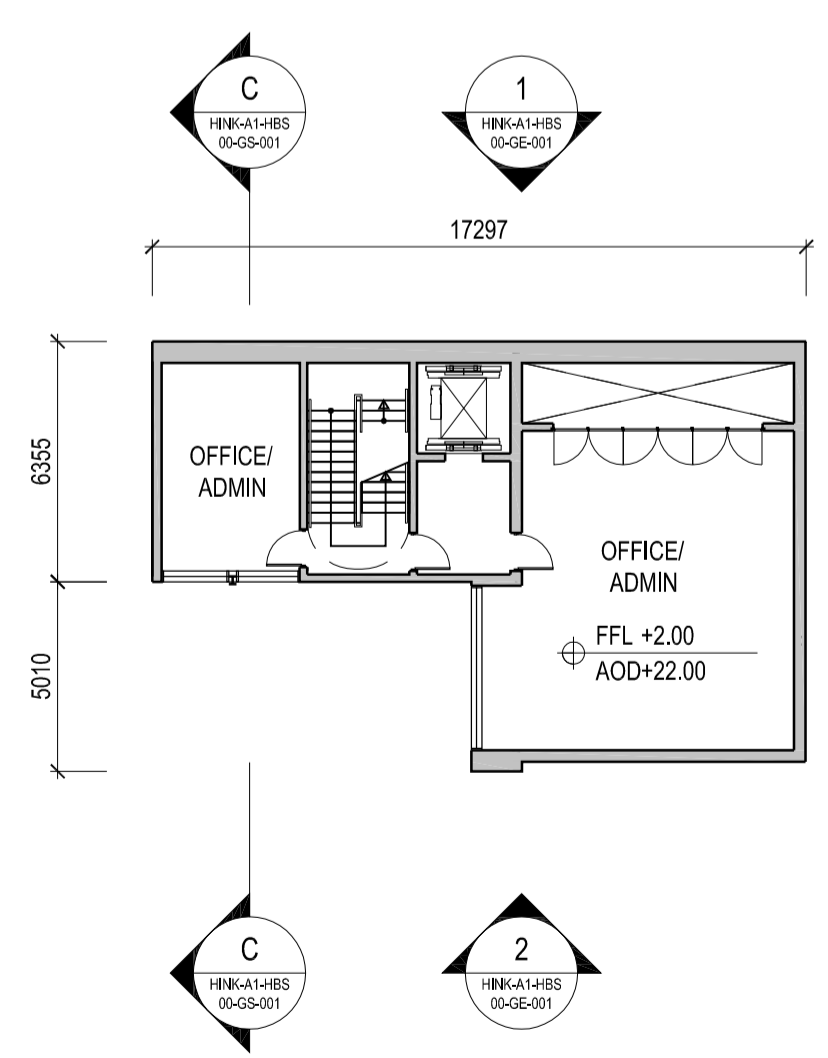


All internal layouts and uses are shown for illustrative purposes only and are not for determination

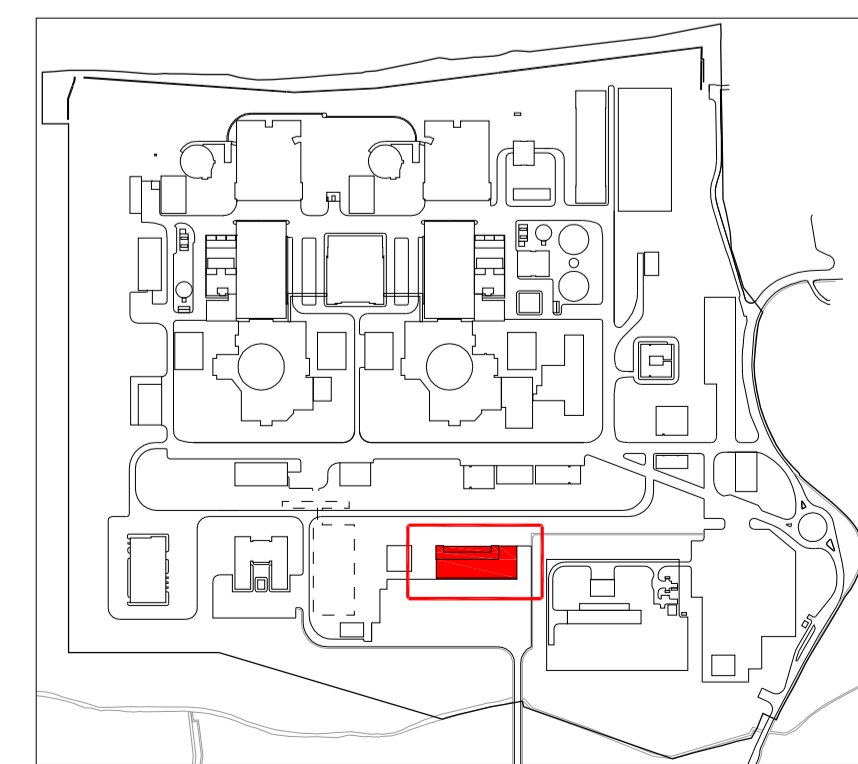
NOTES:



1 GROUND FLOOR PLAN
SCALE 1:200



2 MEZZANINE FLOOR PLAN
SCALE 1:200



Hinkley Point C Site Key Plan - NTS

REVISION	DATE	DRAWN	CHECKED	FOR IPC SUBMISSION	NWB
01	SEPT 2011	YRM	YRM	FOR IPC SUBMISSION	NWB

REASONS FOR REVISION COMMENTS



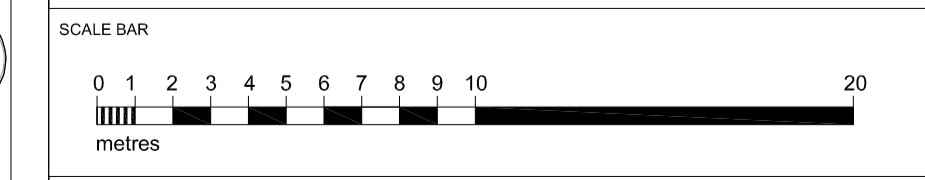
HINKLEY POINT C

DRAWING TITLE
Hinkley Point C Development Site
Simulator Building / Training Centre

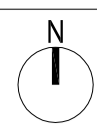
Ground Floor Plan & Mezzanine Level
Regulation 5(2)(o)

PROJECT DRAWING REFERENCE NO.	REVISION	SCALE	DATE
HINK-A1-HBS-00-GA-001	01	1:200 @ A1	SEPT 2011

DOCUMENT
Application Drawing - Illustrative (not for Approval)

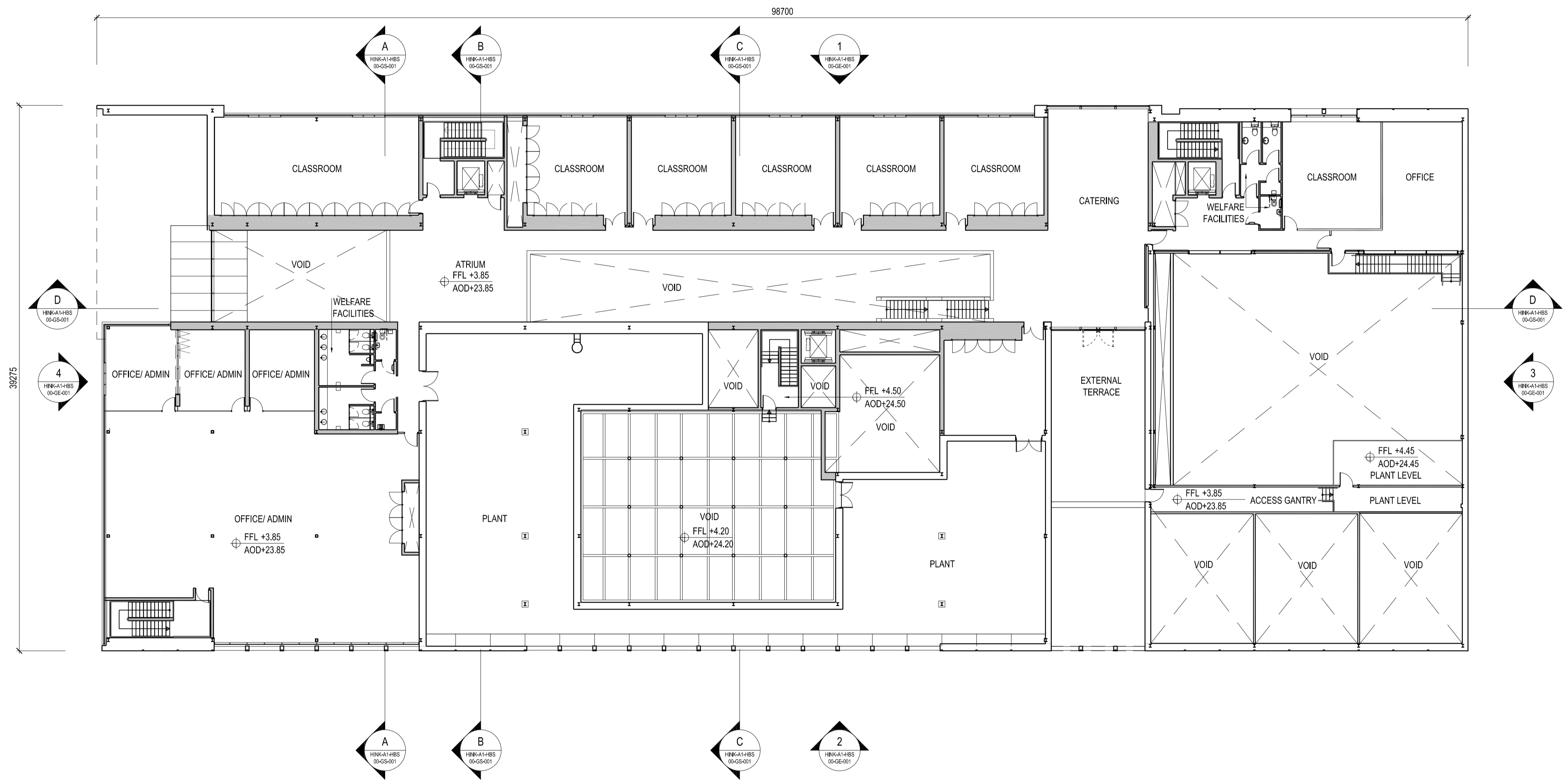


- DRAWING SECURITY CLASSIFICATION
- PROTECTIVE MARKING REQUIRED
 - NOT PROTECTIVELY MARKED



All internal layouts and uses are shown for illustrative purposes only and are not for determination

NOTES:



1 FIRST FLOOR PLAN
SCALE 1:200

REVISION	DATE	DRAWN	CHECKED	FOR IPC SUBMISSION	N/NB
01	SEPT 2011	YRM	YRM	FOR IPC SUBMISSION	N/NB
				REASONS FOR REVISION COMMENTS	APPROVED



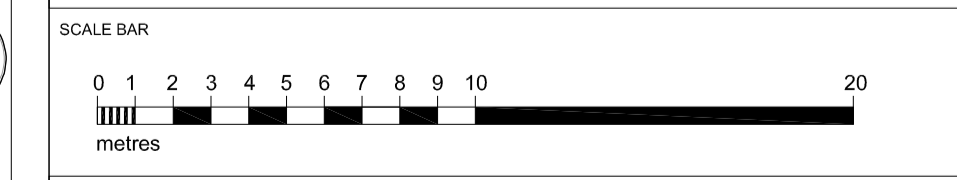
HINKLEY POINT C

DRAWING TITLE
Hinkley Point C Development Site
Simulator Building / Training Centre

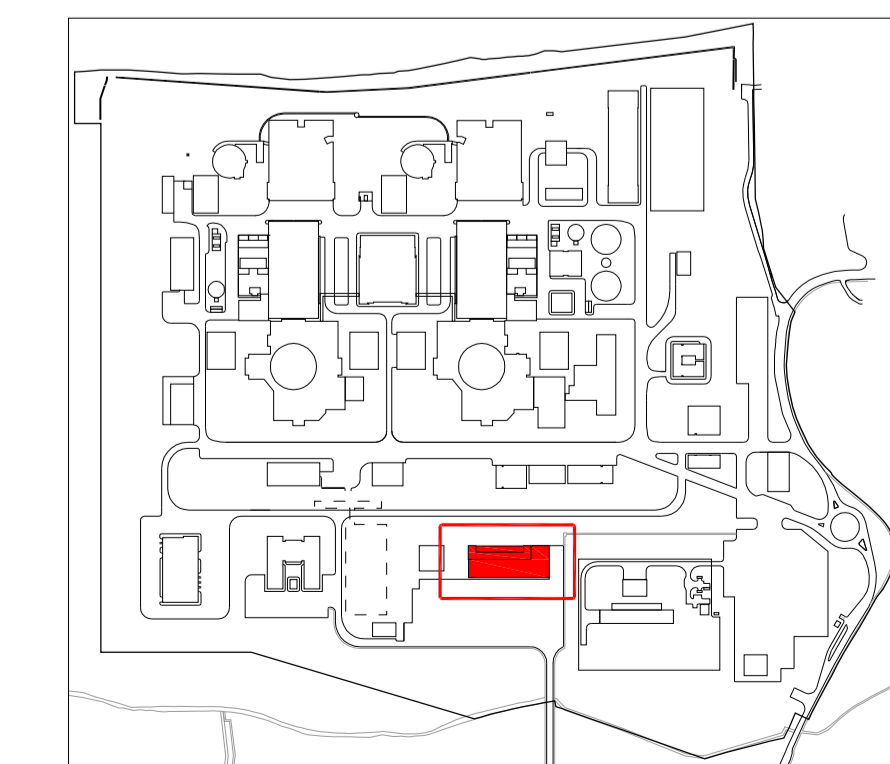
First Floor Plan
Regulation 5(2)(o)

PROJECT DRAWING REFERENCE NO.	REVISION	SCALE	DATE
HINK-A1-HBS-00-GP-010	01	1:200 @ A1	SEPT 2011

DOCUMENT
Application Drawing - Illustrative (not for Approval)



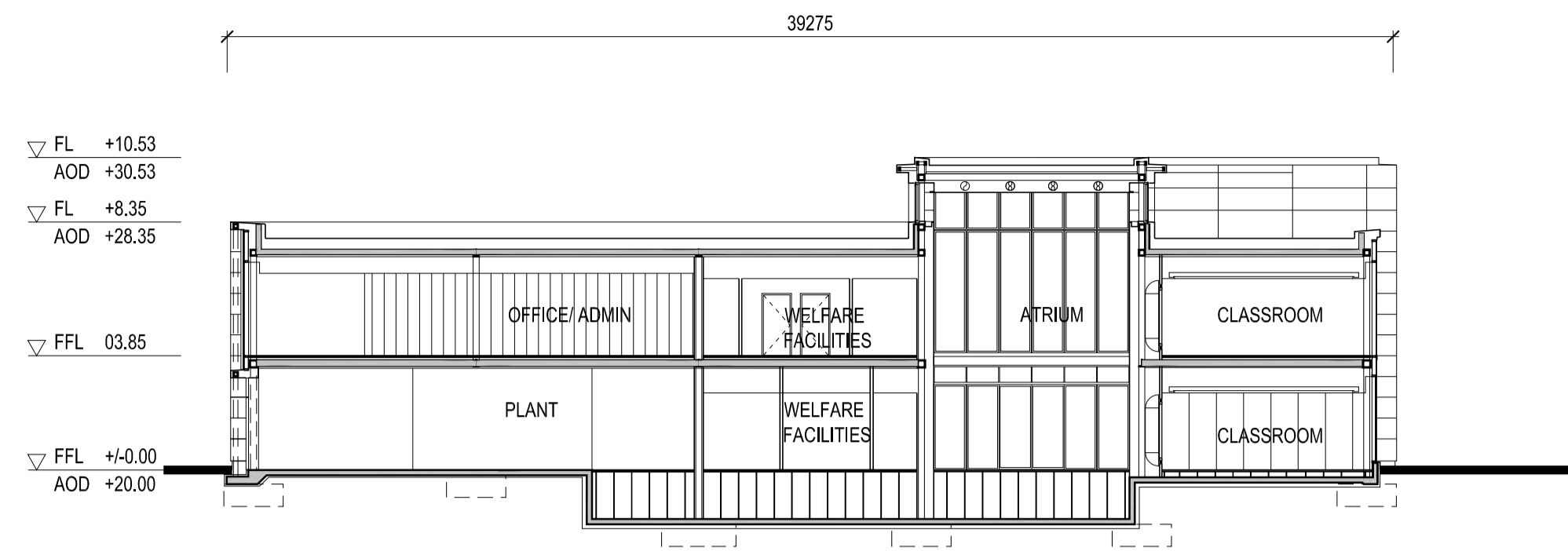
- DRAWING SECURITY CLASSIFICATION
- PROTECTIVE MARKING REQUIRED
 - NOT PROTECTIVELY MARKED



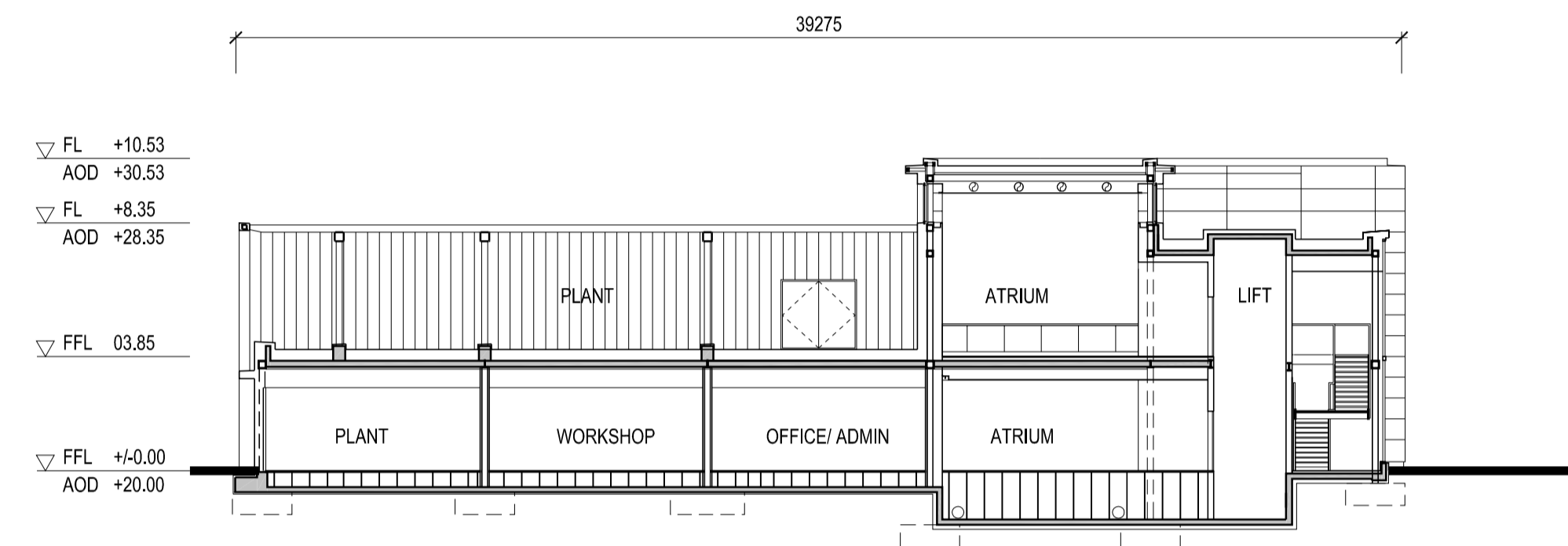
Hinkley Point C Site Key Plan - NTS

All internal layouts and uses are shown for illustrative purposes only and are not for determination

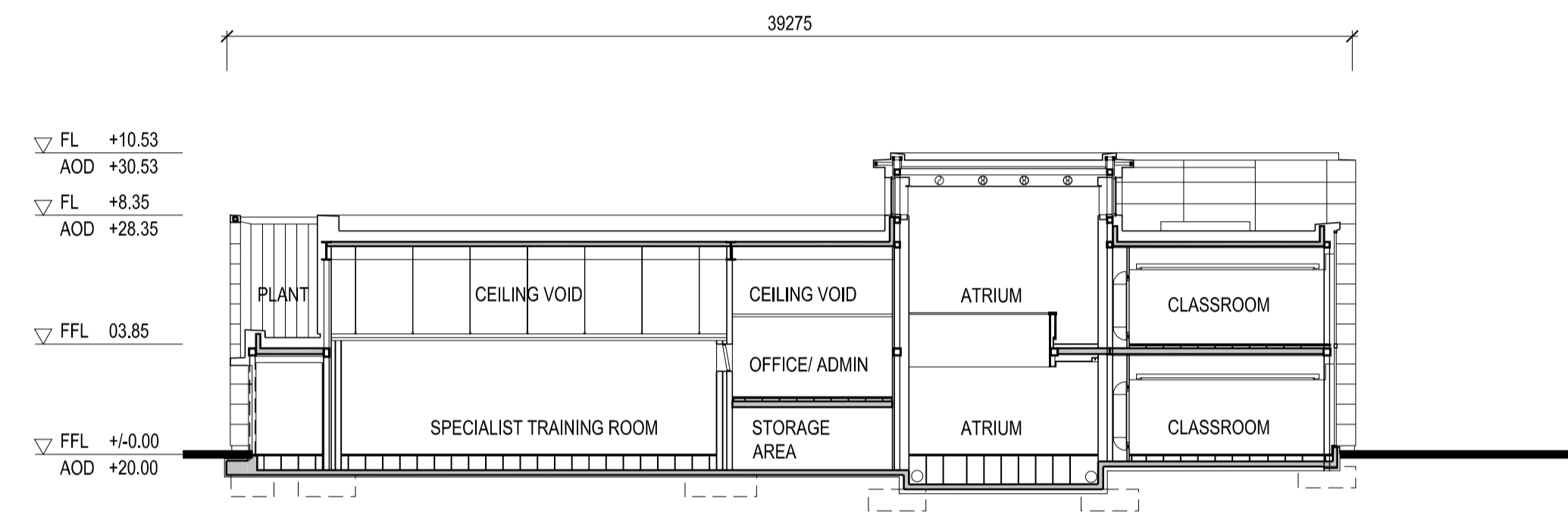
NOTES:



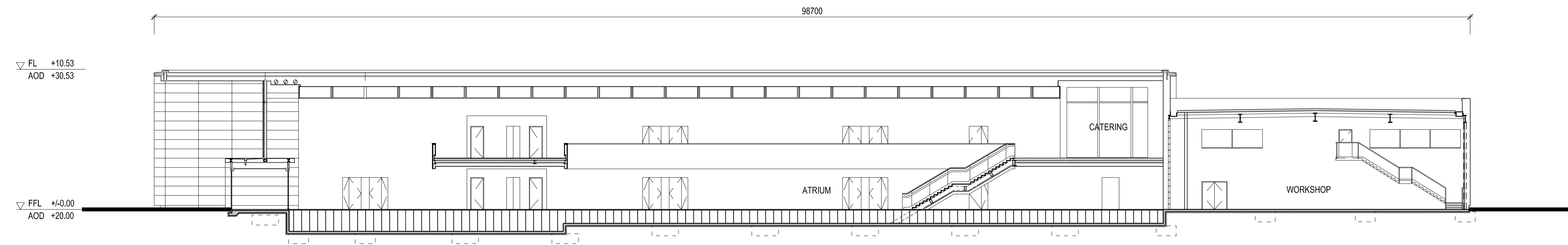
1 SECTION A:A
SCALE 1:200



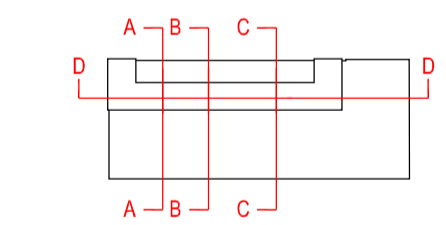
2 SECTION B:B
SCALE 1:200



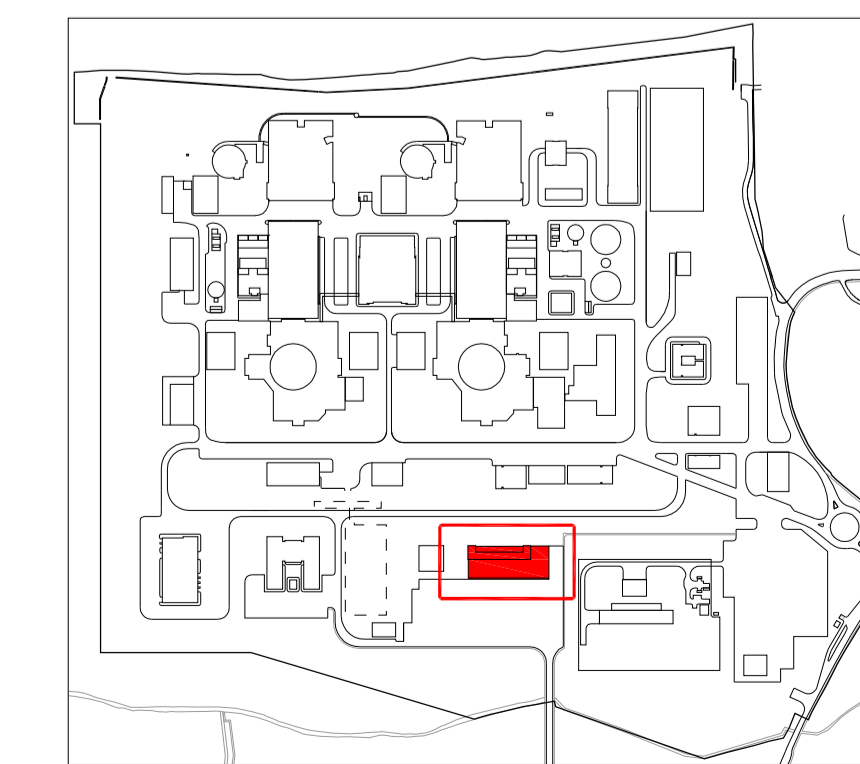
3 SECTION C:C
SCALE 1:200



4 SECTION D:D
SCALE 1:200



Elevation / Section Key Plan



Hinkley Point C Site Key Plan - NTS

REVISION	DATE	DRAWN	CHECKED	FOR IPC SUBMISSION	NNB
01	SEPT 2011	YRM	YRM	FOR IPC SUBMISSION	NNB
				REASONS FOR REVISION/ COMMENTS	APPROVED



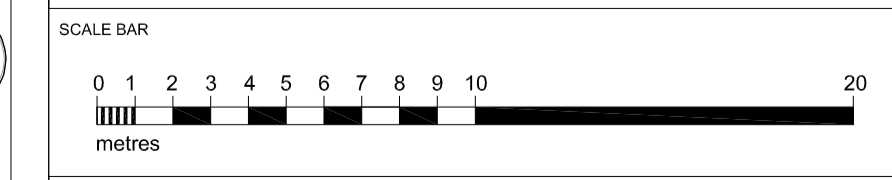
HINKLEY POINT C

DRAWING TITLE
Hinkley Point C Development Site
Simulator Building / Training Centre

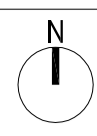
Sections
Regulation 5(2)(o)

PROJECT DRAWING REFERENCE NO.	REVISION	SCALE	DATE
HINK-A1-HBS-00-GS-001	01	1:200 @ A1	SEPT 2011

DOCUMENT
Application Drawing - Illustrative (not for Approval)

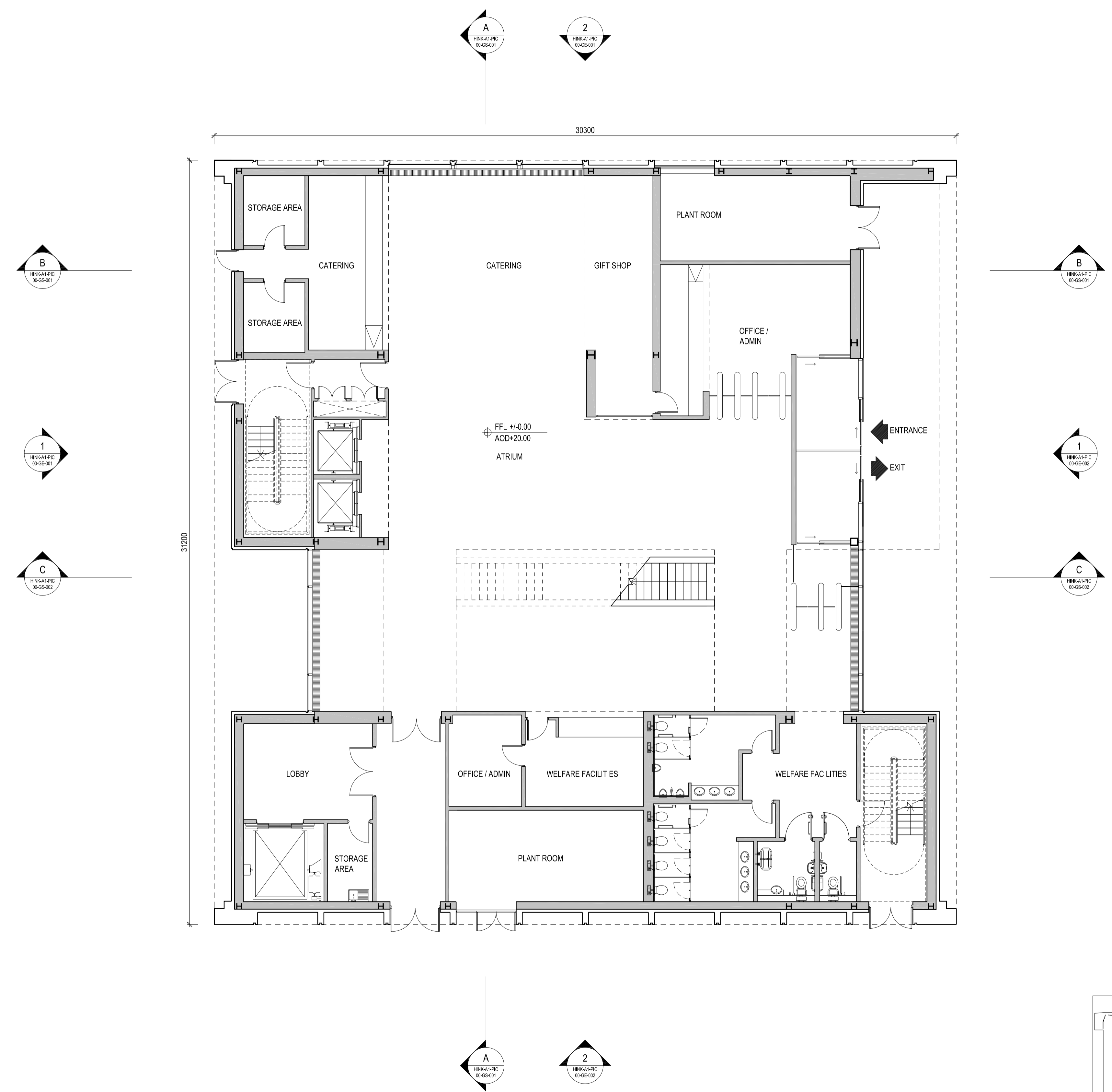


- DRAWING SECURITY CLASSIFICATION
- PROTECTIVE MARKING REQUIRED
 - NOT PROTECTIVELY MARKED

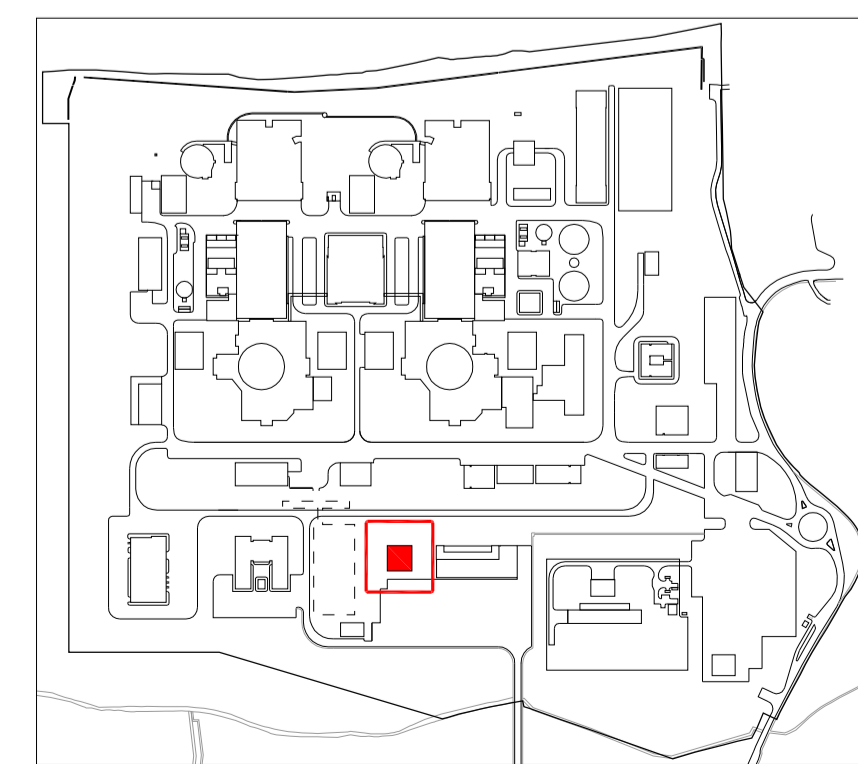


All internal layouts and uses are shown for illustrative purposes only and are not for determination

NOTES:



1 GROUND FLOOR PLAN
SCALE 1:100



Hinkley Point C Site Key Plan - NTS

REVISION	DATE	DRAWN	CHECKED	FOR IPC SUBMISSION	NNB
01	SEPT 2011	YRM	YRM	FOR IPC SUBMISSION	NNB



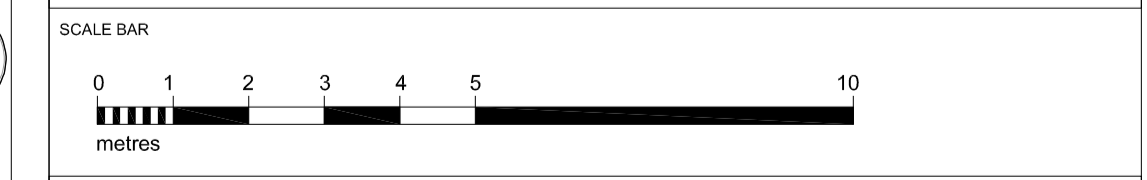
HINKLEY POINT C

DRAWING TITLE
Hinkley Point C Development Site
Public Information Centre

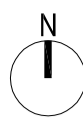
Ground Floor Plan
Regulation 5(2)(o)

PROJECT DRAWING REFERENCE NO.	REVISION	SCALE	DATE
HINK-A1-PIC-00-GP-000	01	1:100 @ A1	SEPT 2011

DOCUMENT
Application Drawing - Illustrative (not for Approval)

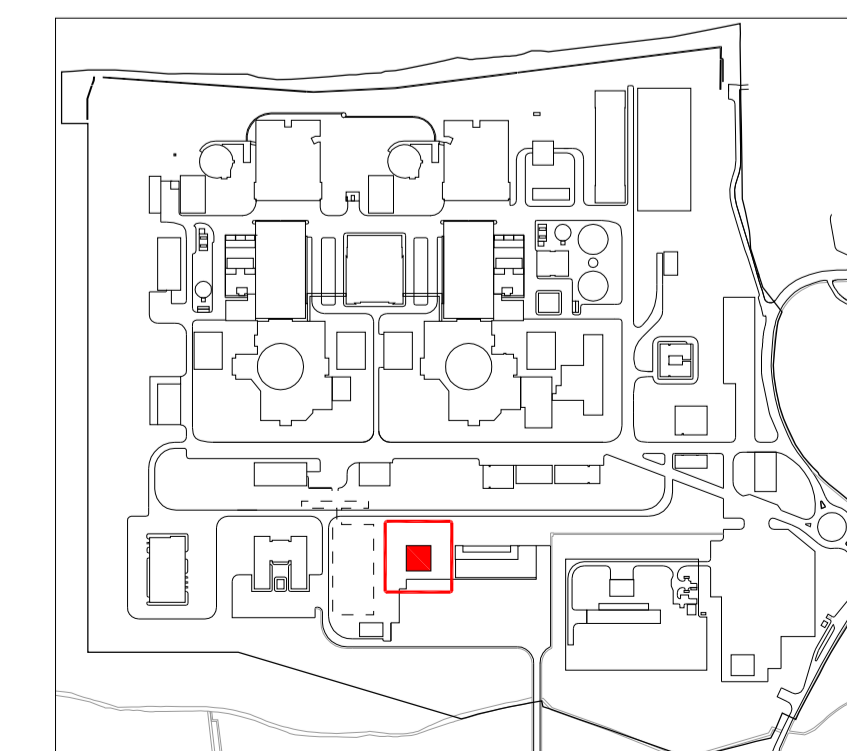
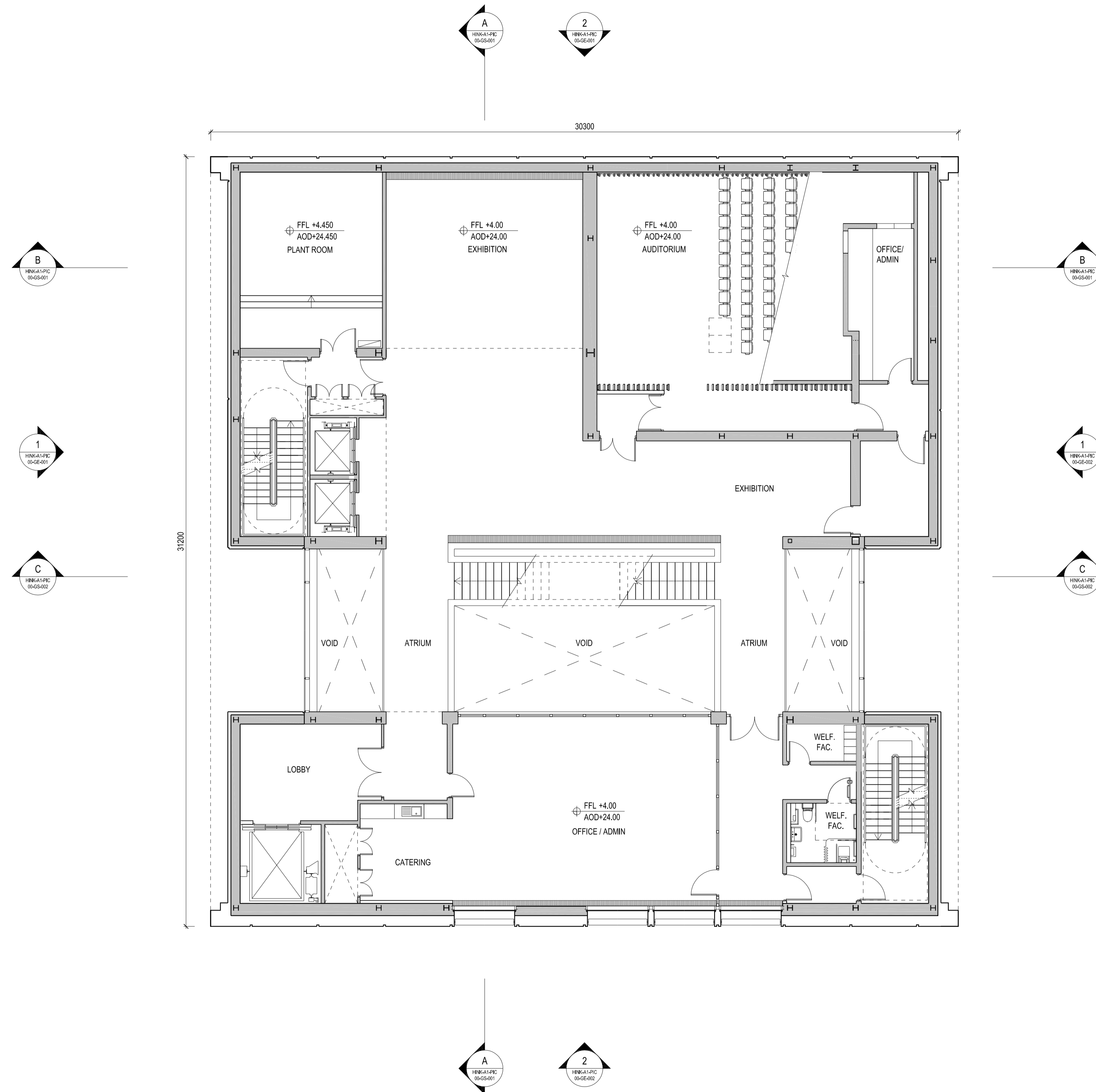


- DRAWING SECURITY CLASSIFICATION
- PROTECTIVE MARKING REQUIRED
 - NOT PROTECTIVELY MARKED



All internal layouts and uses are shown for illustrative purposes only and are not for determination

NOTES:



Hinkley Point C Site Key Plan - NTS

REVISION	DATE	DRAWN	CHECKED	FOR IPC SUBMISSION	NNB
01	SEPT 2011	YRM	YRM	FOR IPC SUBMISSION	NNB
				REASONS FOR REVISION COMMENTS	APPROVED



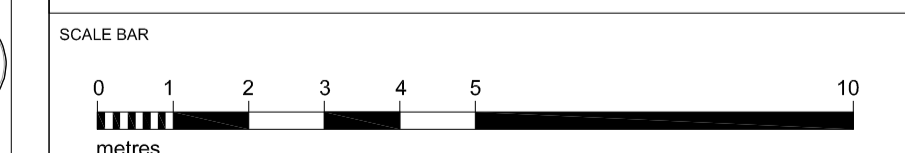
HINKLEY POINT C

DRAWING TITLE
Hinkley Point C Development Site
Public Information Centre

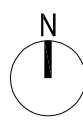
First Floor Plan
Regulation 5(2)(o)

PROJECT DRAWING REFERENCE NO.	REVISION	SCALE	DATE
HINK-A1-PIC-00-GP-010	01	1:100 @ A1	SEPT 2011

DOCUMENT
Application Drawing - Illustrative (not for Approval)

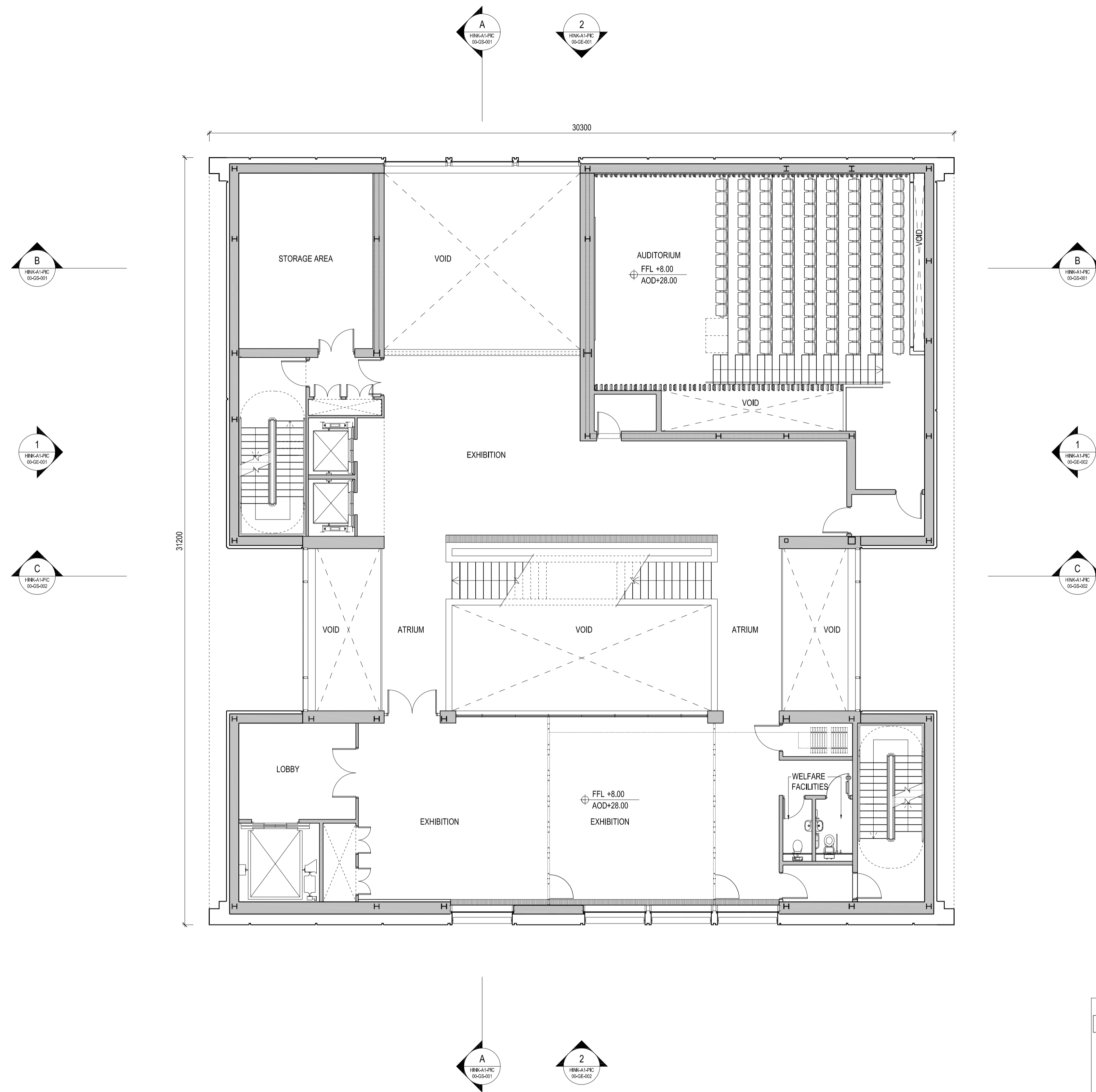


- DRAWING SECURITY CLASSIFICATION
- PROTECTIVE MARKING REQUIRED
 - NOT PROTECTIVELY MARKED



All internal layouts and uses are shown for illustrative purposes only and are not for determination

NOTES:



REVISION	DATE	DRAWN	CHECKED	FOR IPC SUBMISSION	NNB
01	SEPT 2011	YRM	YRM	FOR IPC SUBMISSION	NNB



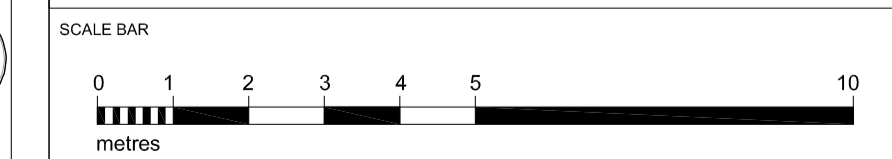
HINKLEY POINT C

DRAWING TITLE
Hinkley Point C Development Site
Public Information Centre

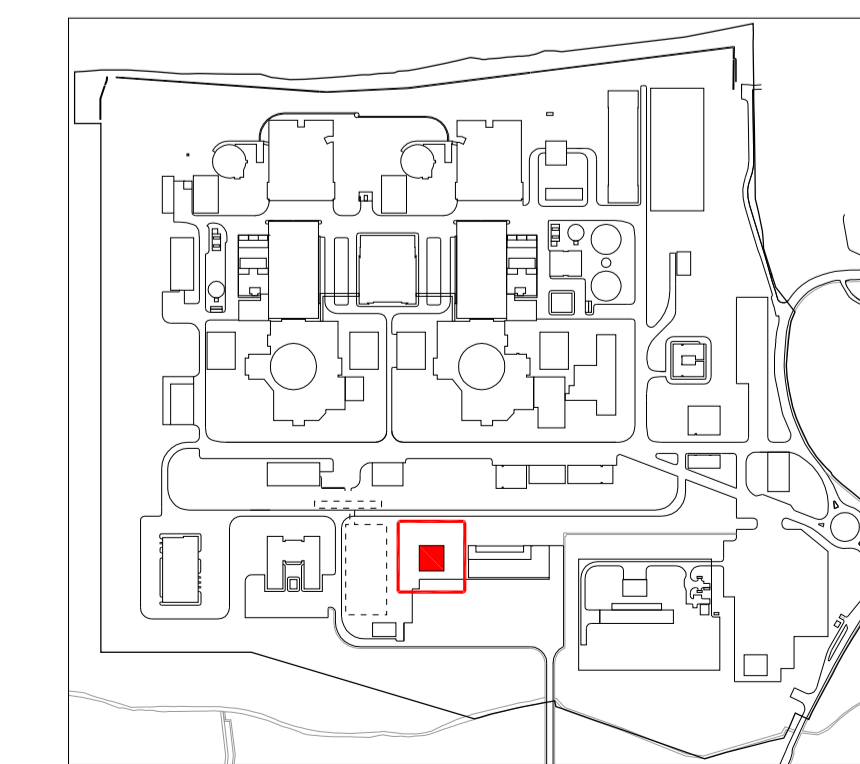
Second Floor Plan
Regulation 5(2)(o)

PROJECT DRAWING REFERENCE NO.	REVISION	SCALE	DATE
HINK-A1-PIC-00-GP-020	01	1:100 @ A1	SEPT 2011

DOCUMENT
Application Drawing - Illustrative (not for Approval)



- DRAWING SECURITY CLASSIFICATION
- PROTECTIVE MARKING REQUIRED
 - NOT PROTECTIVELY MARKED



Hinkley Point C Site Key Plan - NTS



All internal layouts and uses are shown for illustrative purposes only and are not for determination

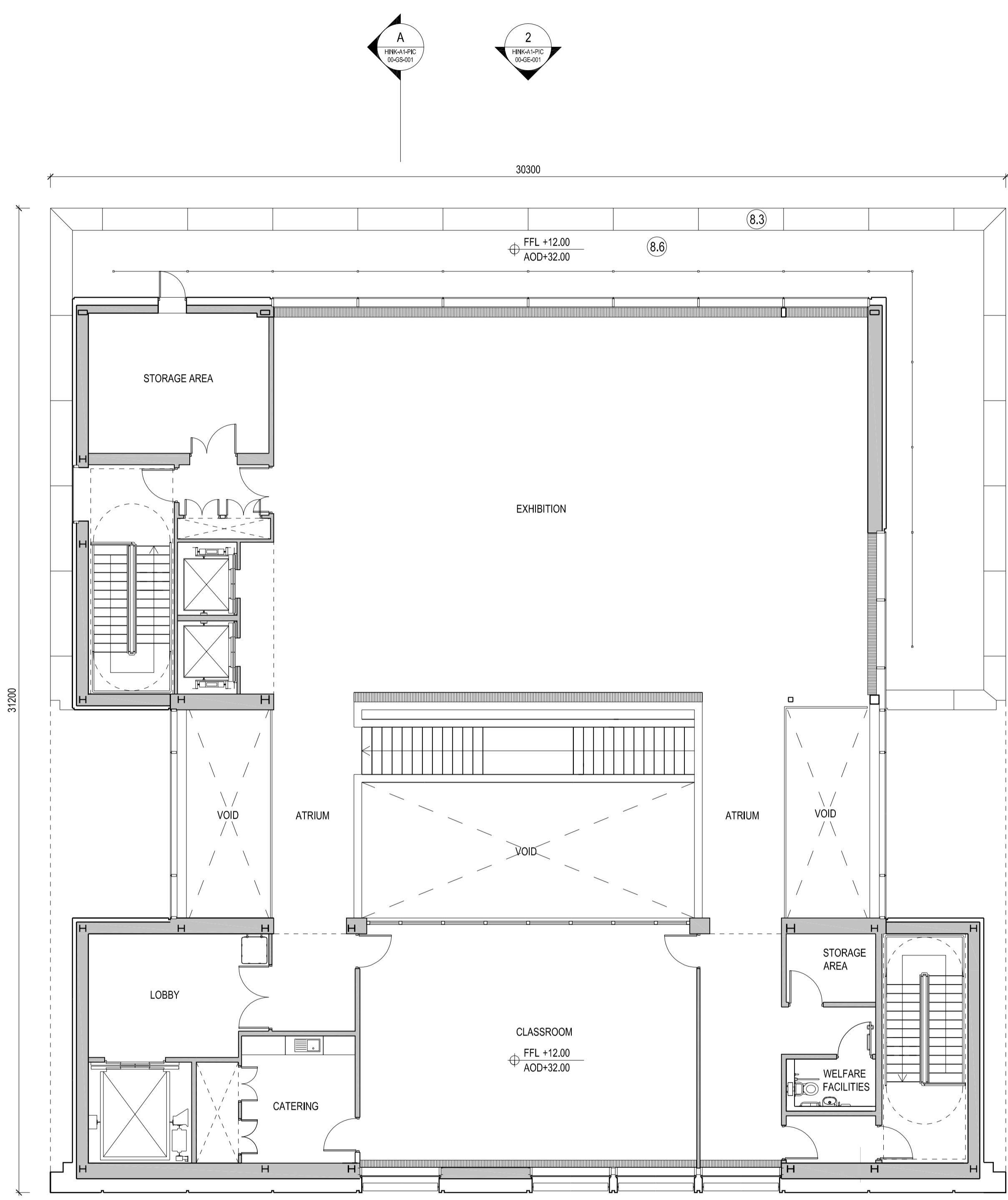
NOTES:

Materials Key:

Vertical Enclosure - Wall

- 1 Concrete / render finishes**
- 1.1 In-situ concrete
- 1.2 Pre-cast concrete
- 1.3 Render finish
- 2 Cladding**
- 2.1 Aluminium standing seam
- 2.2 Aluminium panels
- 2.3 Aluminium planks
- 2.4 Profiled steel panels
- 2.5 Flat steel panels
- 2.6 Fibre cement cladding
- 2.7 Glass reinforced plastic
- 3 Glazing / translucent materials**
- 3.1 Cast glass c-channel
- 3.2 Frameless glazing
- 3.3 Framed glazing
- 3.4 Opaque glazed spandrel panel
- 3.5 Polycarbonate translucent cladding
- 4 External wall features**
- 4.1 Aluminium trims, copings and casings
- 4.2 Aluminium louvres
- 4.3 Glass louvres
- 4.4 Aluminium brise-soleil
- 4.5 Glass brise-soleil
- 4.6 Mesh expanded metal panels
- 4.7 Fencing
- 4.8 Barbed tape
- 4.9 Retractable steel shutters
- 5 Doors**
- 5.1 Metal door
- 5.2 Metal louvre door
- 5.3 Glazed door
- 5.4 Access gates
- 6 Window / metalwork accessories**
- 6.1 External fabric blinds
- 6.2 Cavity venetian blinds
- 6.3 Glazed balustrade
- 6.4 Metal stairs and ladders
- 7 Roofing**
- 7.1 Sedum roof
- 7.2 Ballast
- 7.3 Standing seam roof
- 7.4 Concrete roof
- 8 Roofing Accessories**
- 8.1 Roof light
- 8.2 Roof vents and hatches
- 8.3 Metal cappings and copings
- 8.4 Paving
- 8.5 PVs and solar panels
- 8.6 Timber decking

Horizontal Enclosure - Roof



REVISION	DATE	DRAWN	CHECKED	FOR IPC SUBMISSION	NMB
01	SEPT 2011	YRM	YRM	FOR IPC SUBMISSION	NMB



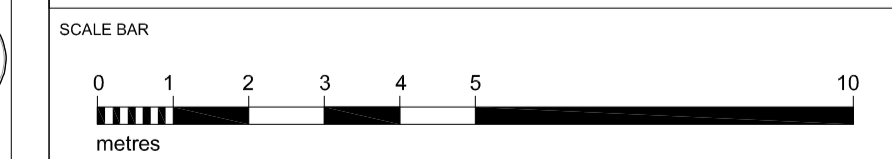
HINKLEY POINT C

DRAWING TITLE
Hinkley Point C Development Site
Public Information Centre

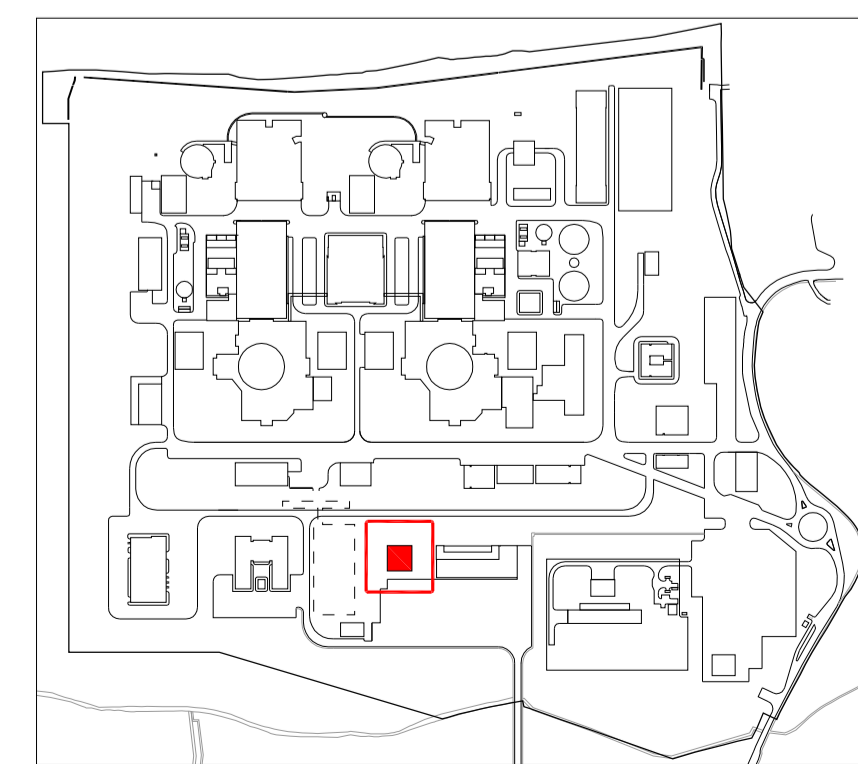
Third Floor Plan
Regulation 5(2)(o)

PROJECT DRAWING REFERENCE NO.	REVISION	SCALE	DATE
HINK-A1-PIC-00-GP-030	01	1:100 @ A1	SEPT 2011

DOCUMENT
Application Drawing - Illustrative (not for Approval)



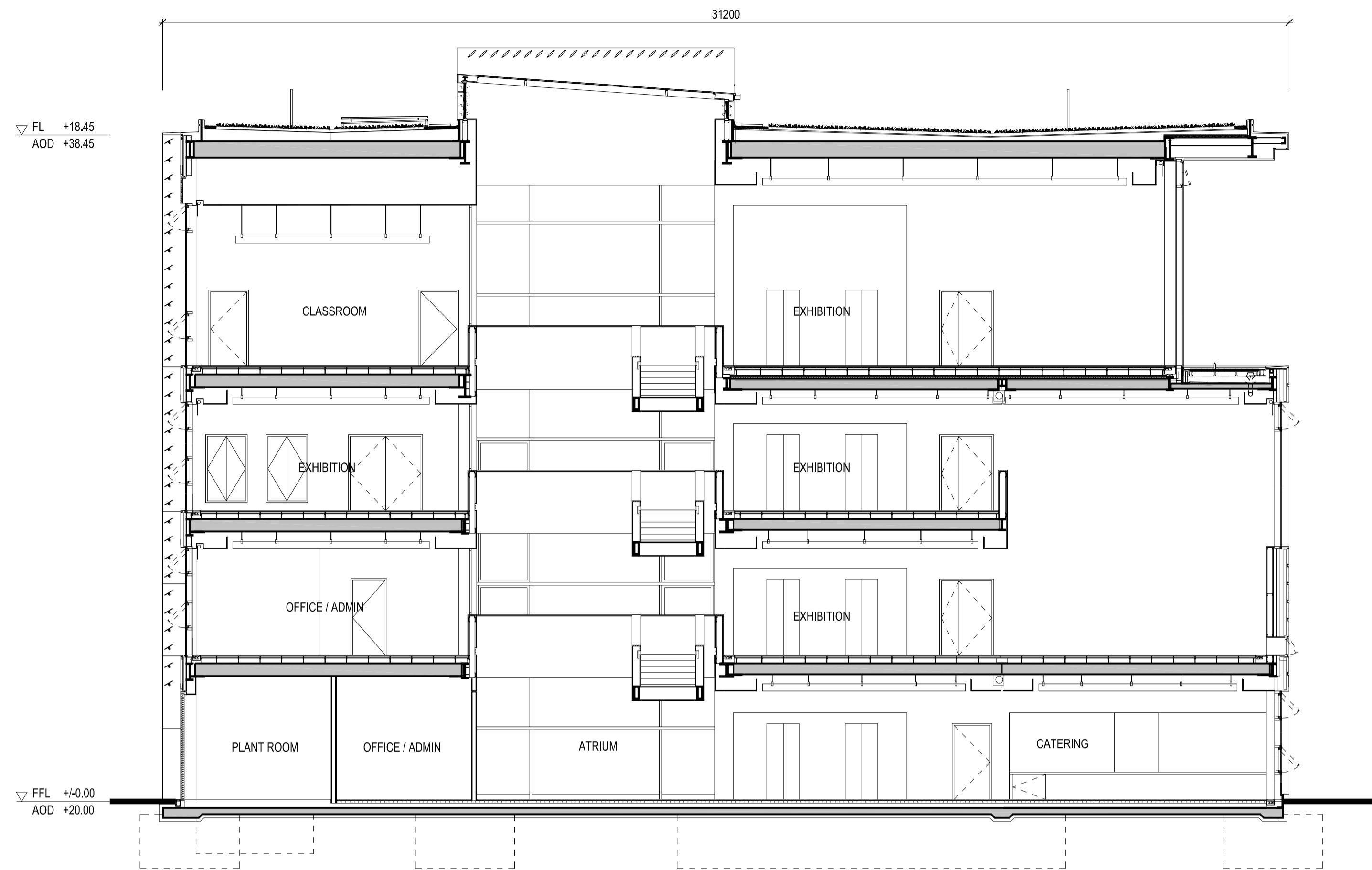
- DRAWING SECURITY CLASSIFICATION
- PROTECTIVE MARKING REQUIRED
 - NOT PROTECTIVELY MARKED



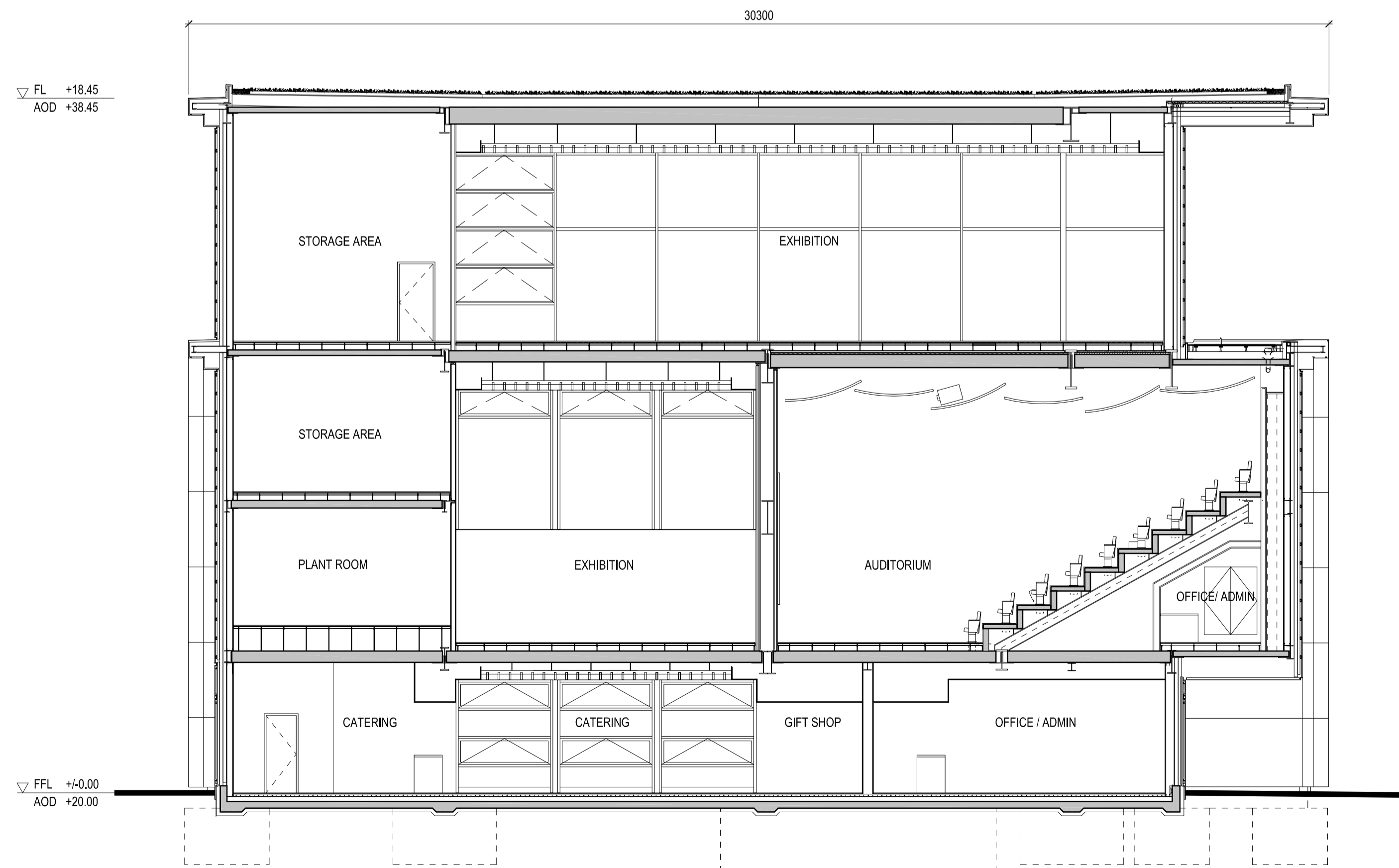
Hinkley Point C Site Key Plan - NTS

All internal layouts and uses are shown for illustrative purposes only and are not for determination

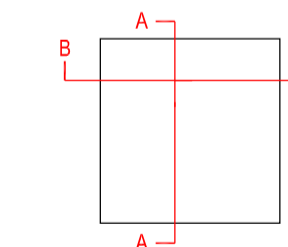
NOTES:



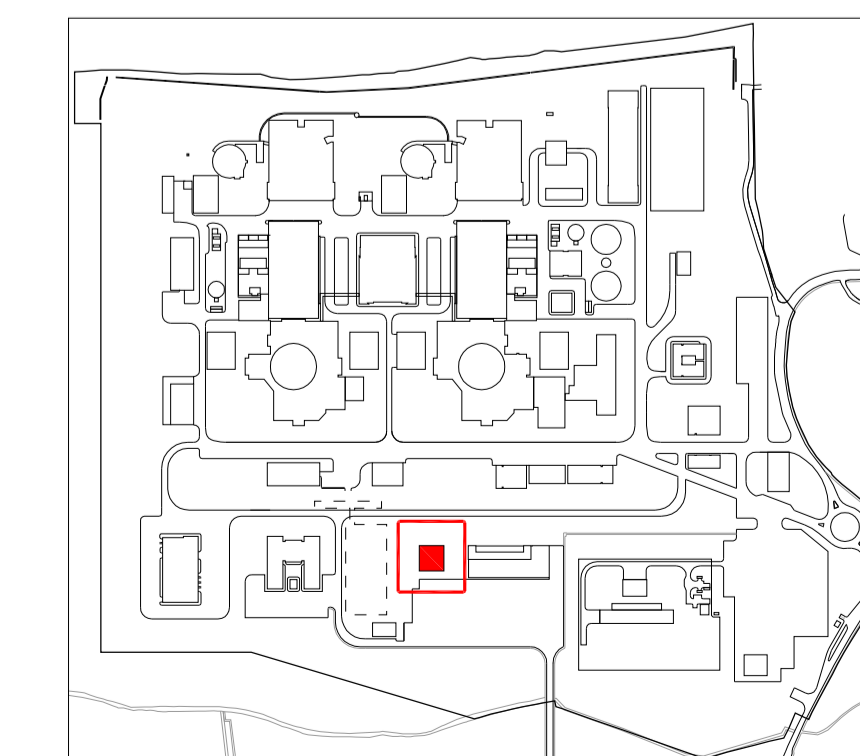
1 SECTION A:A
SCALE 1:100



2 SECTION B:B
SCALE 1:100



Elevation / Section Key Plan



Hinkley Point C Site Key Plan - NTS

REVISION	DATE	DRAWN	CHECKED	FOR IPC SUBMISSION	REASONS FOR REVISION COMMENTS	APPROVED
01	SEPT 2011	YRM	YRM	FOR IPC SUBMISSION		NNB



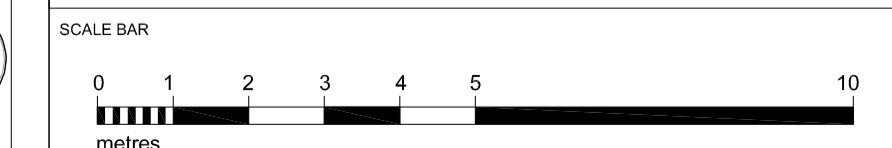
HINKLEY POINT C

DRAWING TITLE
Hinkley Point C Development Site
Public Information Centre

Sections A:A, B:B
Regulation 5(2)(o)

PROJECT DRAWING REFERENCE NO.	REVISION	SCALE	DATE
HINK-A1-PIC-00-GS-001	01	1:100 @ A1	SEPT 2011

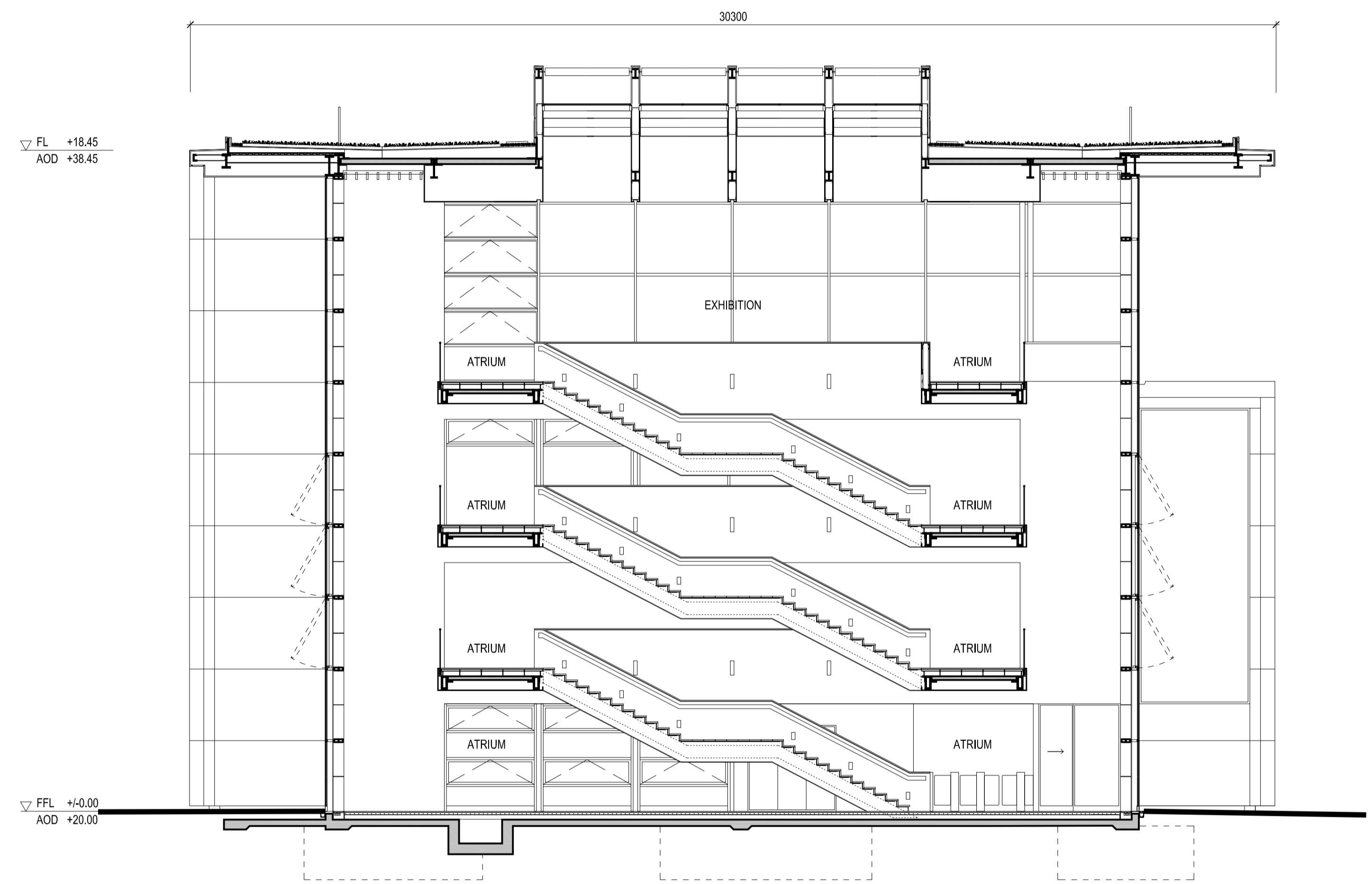
DOCUMENT
Application Drawing - Illustrative (not for Approval)



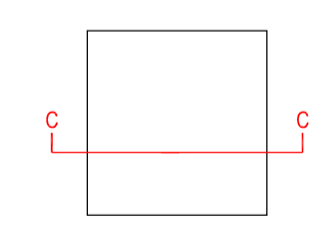
- DRAWING SECURITY CLASSIFICATION
- PROTECTIVE MARKING REQUIRED
 - NOT PROTECTIVELY MARKED

All internal layouts and uses are shown for illustrative purposes only and are not for determination

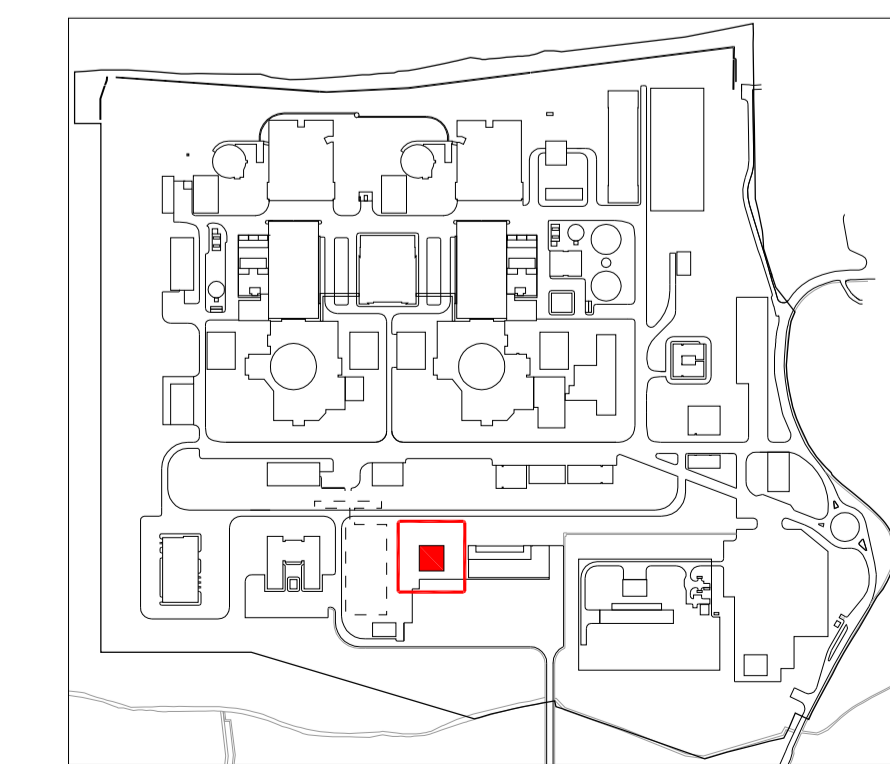
NOTES:



1 SECTION C:C
 SCALE 1:100



Elevation / Section Key Plan



Hinkley Point C Site Key Plan - NTS

REVISION	DATE	DRAWN	CHECKED	FOR IPC SUBMISSION	NNB
01	SEPT 2011	YRM	YRM	FOR IPC SUBMISSION	NNB



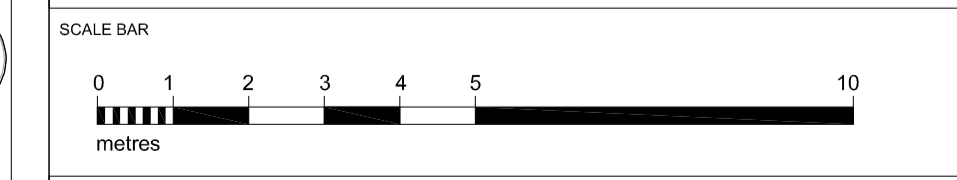
HINKLEY POINT C

DRAWING TITLE
**Hinkley Point C Development Site
 Public Information Centre**

Sections C:C
 Regulation 5(2)(o)

PROJECT DRAWING REFERENCE NO.	REVISION	SCALE	DATE
HINK-A1-PIC-00-GS-002	01	1:100 @ A1	SEPT 2011

DOCUMENT
Application Drawing - Illustrative (not for Approval)



- DRAWING SECURITY CLASSIFICATION
- PROTECTIVE MARKING REQUIRED
 - NOT PROTECTIVELY MARKED