



HINKLEY POINT C



FUEL & WASTE STORAGE

(DRAWINGS FOR APPROVAL)



All internal layouts and uses are shown for illustrative purposes only and are not for determination

NOTES:

Materials Key:

Vertical Enclosure - Wall

- | | |
|--|---|
| 1 Concrete / render finishes | 5 Doors |
| 1.1 In-situ concrete | 5.1 Metal door |
| 1.2 Pre-cast concrete | 5.2 Metal louvre door |
| 1.3 Render finish | 5.3 Glazed door |
| | 5.4 Access gates |
| 2 Cladding | 6 Window / metalwork accessories |
| 2.1 Aluminium standing seam | 6.1 External fabric blinds |
| 2.2 Aluminium panels | 6.2 Cavity venetian blinds |
| 2.3 Aluminium planks | 6.3 Glazed balustrade |
| 2.4 Profiled steel panels | 6.4 Metal stairs and ladders |
| 2.5 Flat steel panels | |
| 2.6 Fibre cement cladding | |
| 2.7 Glass reinforced plastic | |
| 3 Glazing / translucent materials | Horizontal Enclosure - Roof |
| 3.1 Cast glass c-channel | 7 Roofing |
| 3.2 Frameless glazing | 7.1 Sedum roof |
| 3.3 Framed glazing | 7.2 Ballast |
| 3.4 Opaque glazed spandrel panel | 7.3 Standing seam roof |
| 3.5 Polycarbonate translucent cladding | 7.4 Concrete roof |
| 4 External wall features | 8 Roofing Accessories |
| 4.1 Aluminium trims, copings and casings | 8.1 Roof light |
| 4.2 Aluminium louvres | 8.2 Roof vents and hatches |
| 4.3 Glass louvres | 8.3 Metal cappings and copings |
| 4.4 Aluminium brise-soleil | 8.4 Paving |
| 4.5 Glass brise-soleil | 8.5 PVs and solar panels |
| 4.6 Mesh expanded metal panels | 8.6 Timber decking |
| 4.7 Fencing | |
| 4.8 Barbed tape | |
| 4.9 Retractable steel shutters | |

| REVISION | DATE | DRAWN | CHECKED | REASONS FOR REVISION COMMENTS | APPROVED |
|----------|-----------|-------|---------|-------------------------------|----------|
| 01 | SEPT 2011 | YHM | YSM | FOR IPC SUBMISSION | NWB |



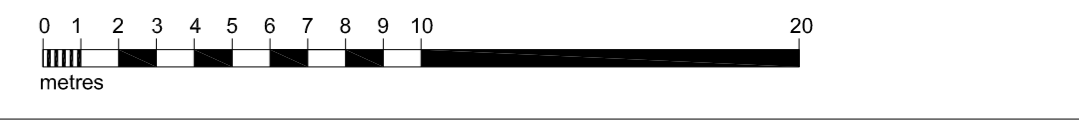
HINKLEY POINT C

DRAWING TITLE
Hinkley Point C Development Site
Intermediate Level Waste Interim Storage Facility

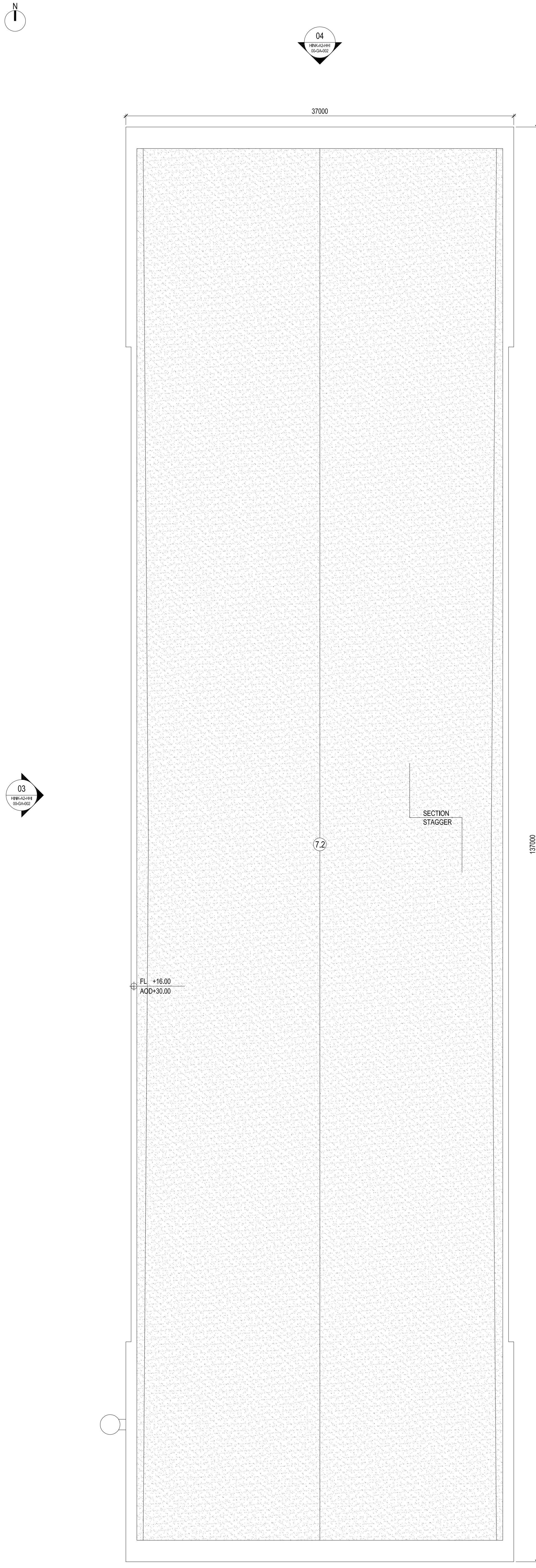
Roof Plan & Elevations
Regulation 5(2)(o)

| | | | |
|--|----------------|---------------------|-------------------|
| PROJECT DRAWING REFERENCE NO. HINK-A2-HHI-00-GA-002 | REVISION 01 | SCALE 1:200 @ A0 | DATE SEPT 2011 |
|--|----------------|---------------------|-------------------|

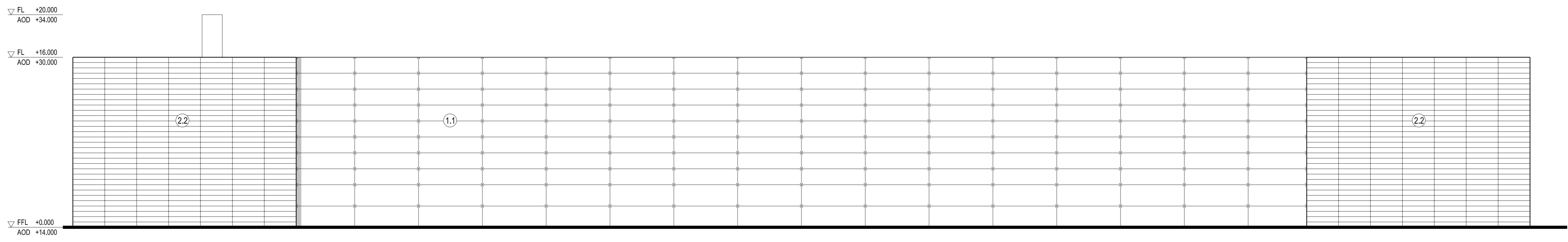
DOCUMENT
Application Drawing - Detail (for Approval)



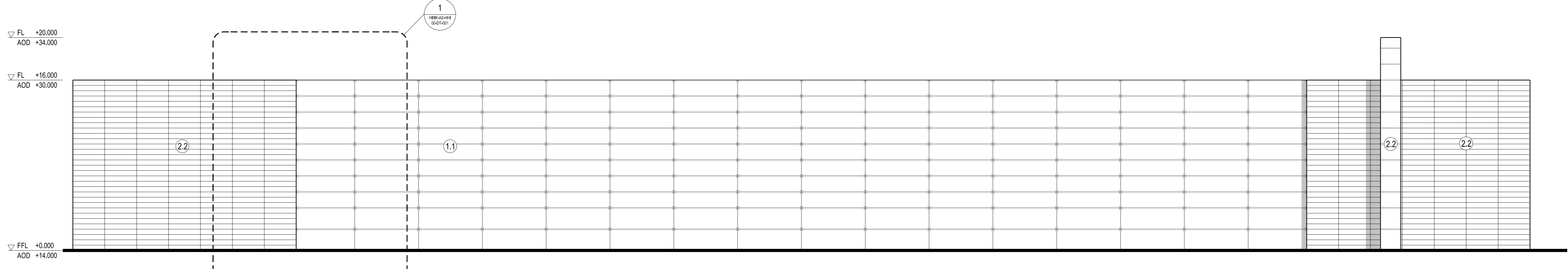
| |
|---|
| <input type="checkbox"/> PROTECTIVE MARKING REQUIRED |
| <input checked="" type="checkbox"/> NOT PROTECTIVELY MARKED |



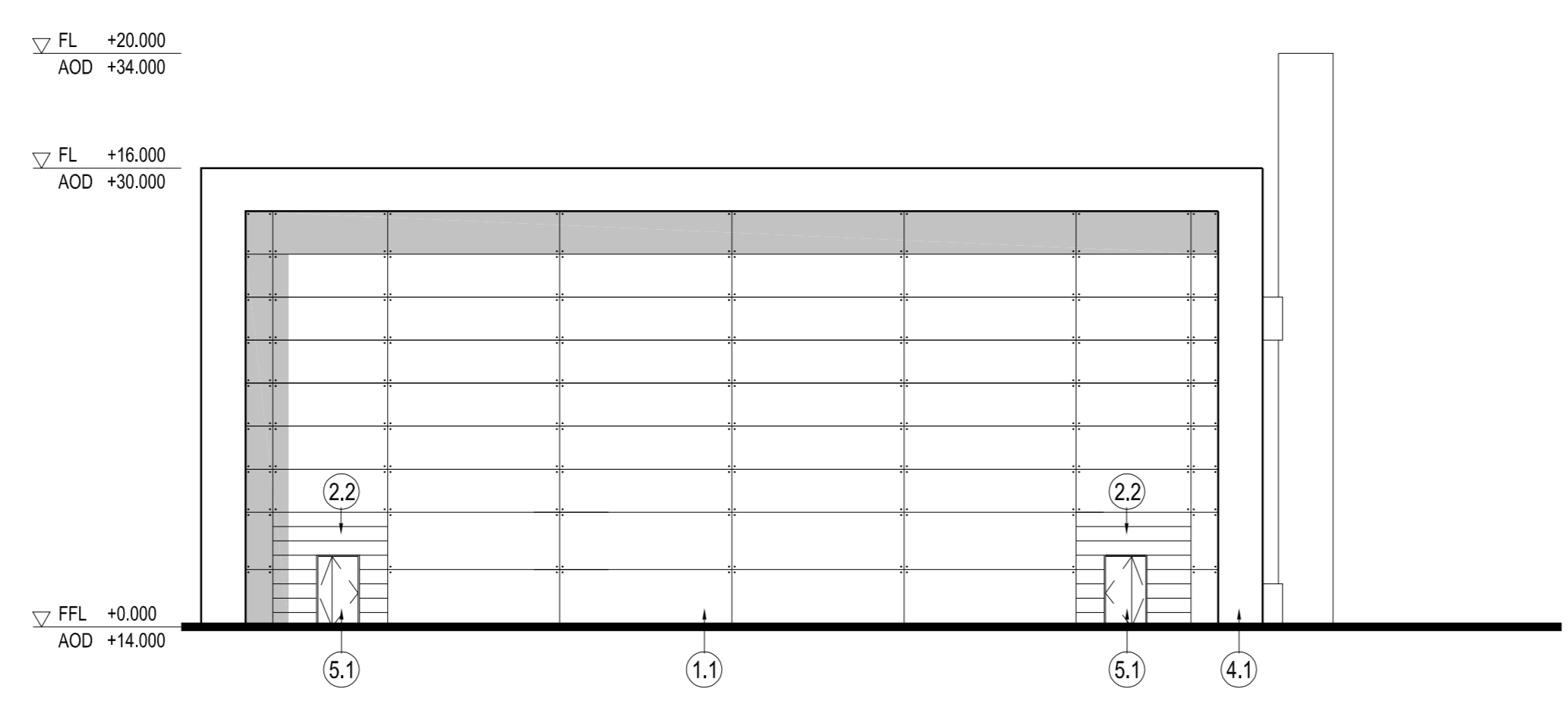
1 ROOF PLAN
SCALE 1:200



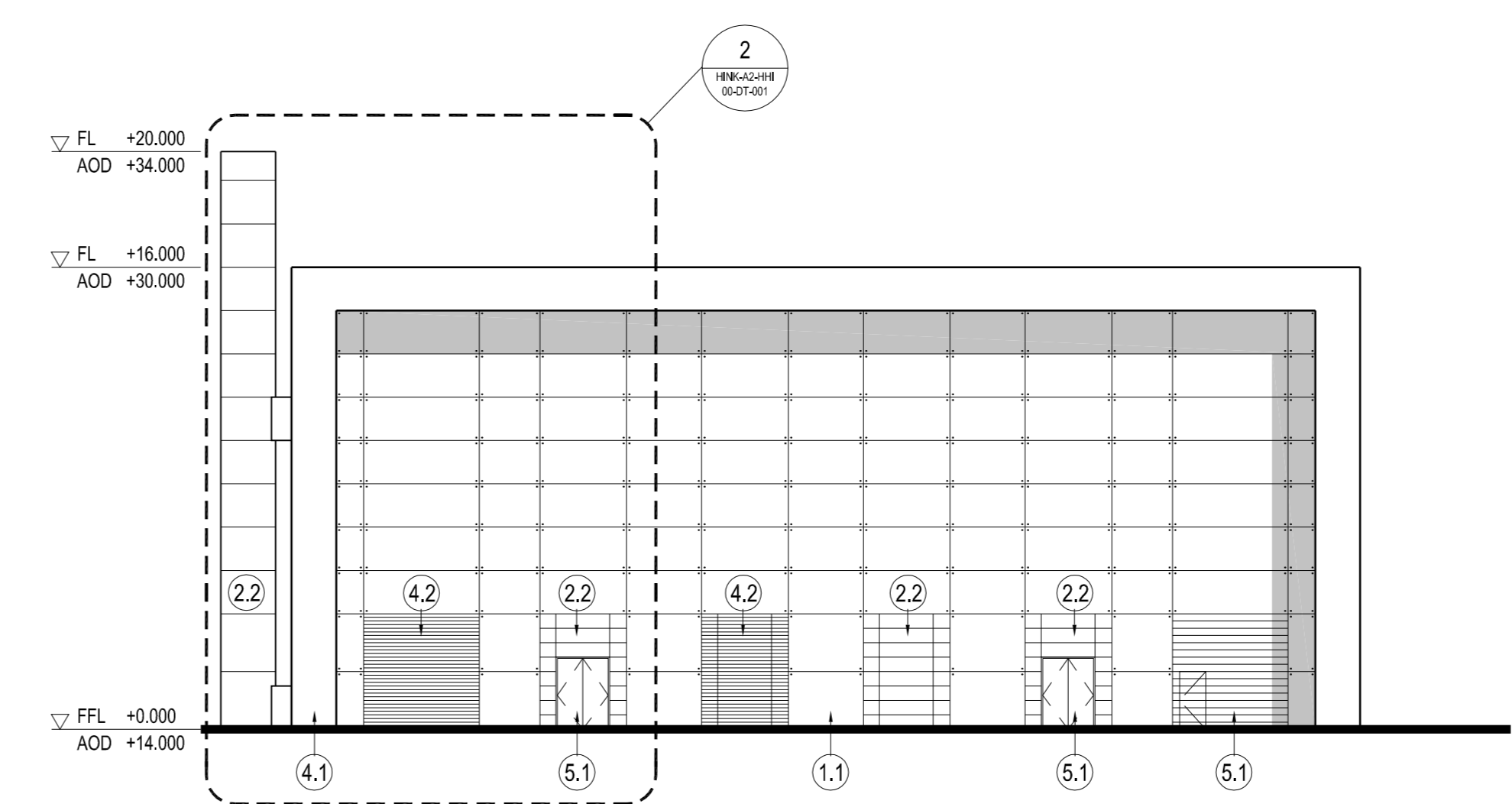
2 EAST ELEVATION
SCALE 1:200



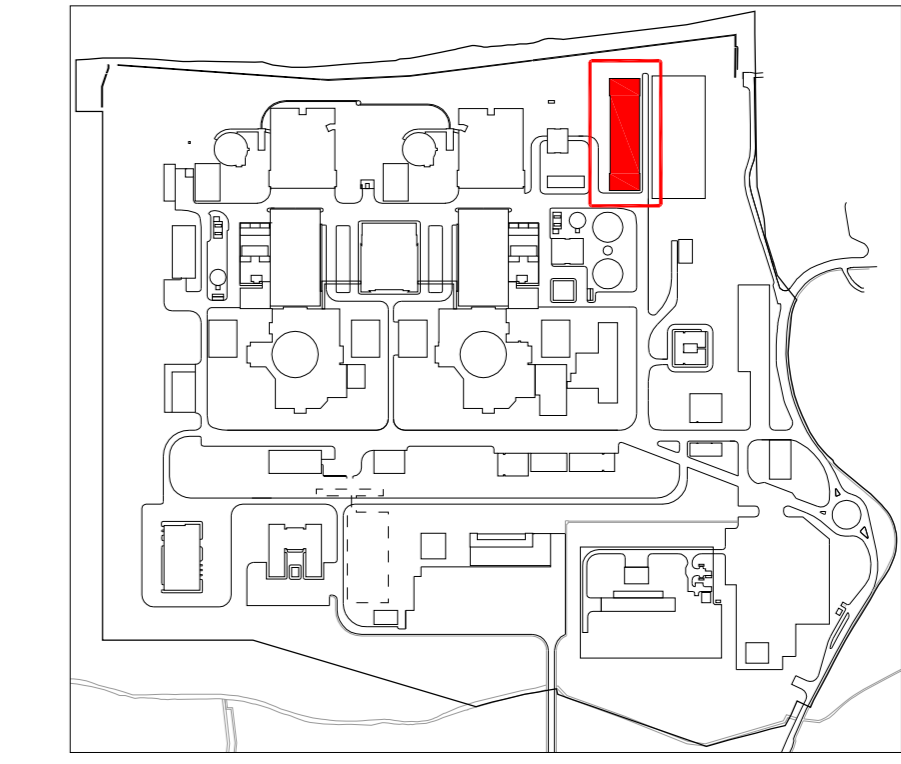
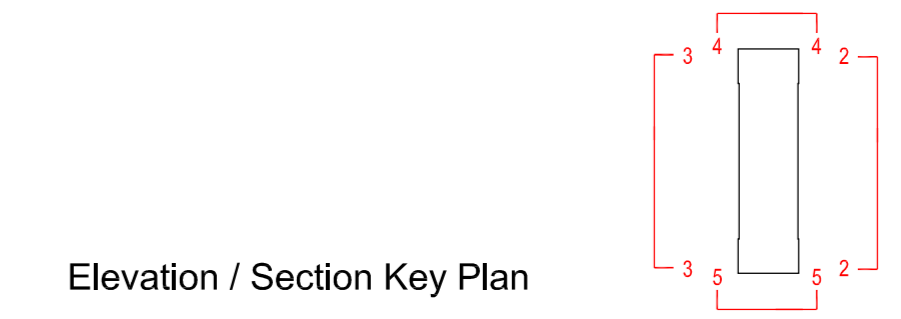
3 WEST ELEVATION
SCALE 1:200



4 NORTH ELEVATION
SCALE 1:200



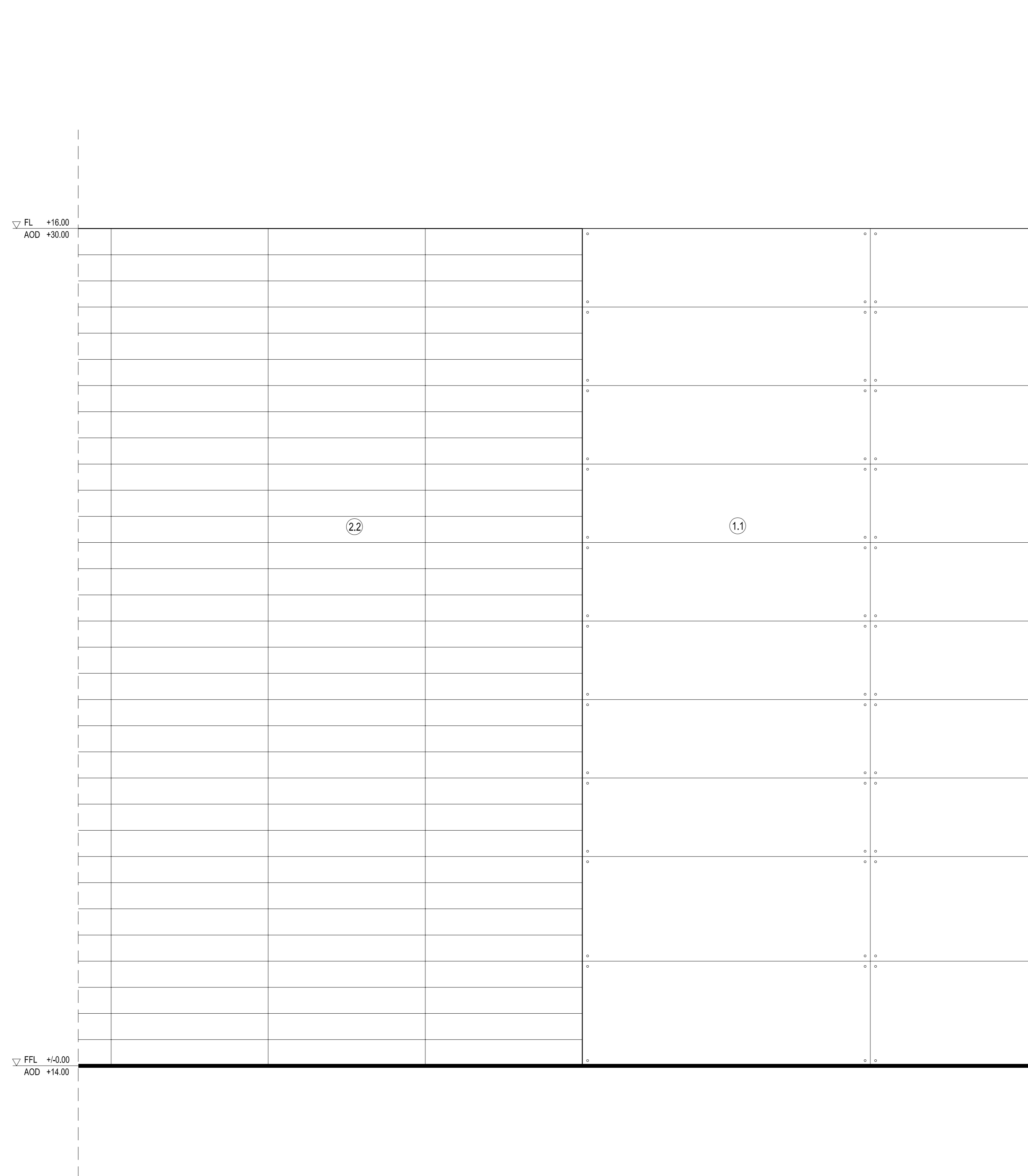
5 SOUTH ELEVATION
SCALE 1:200



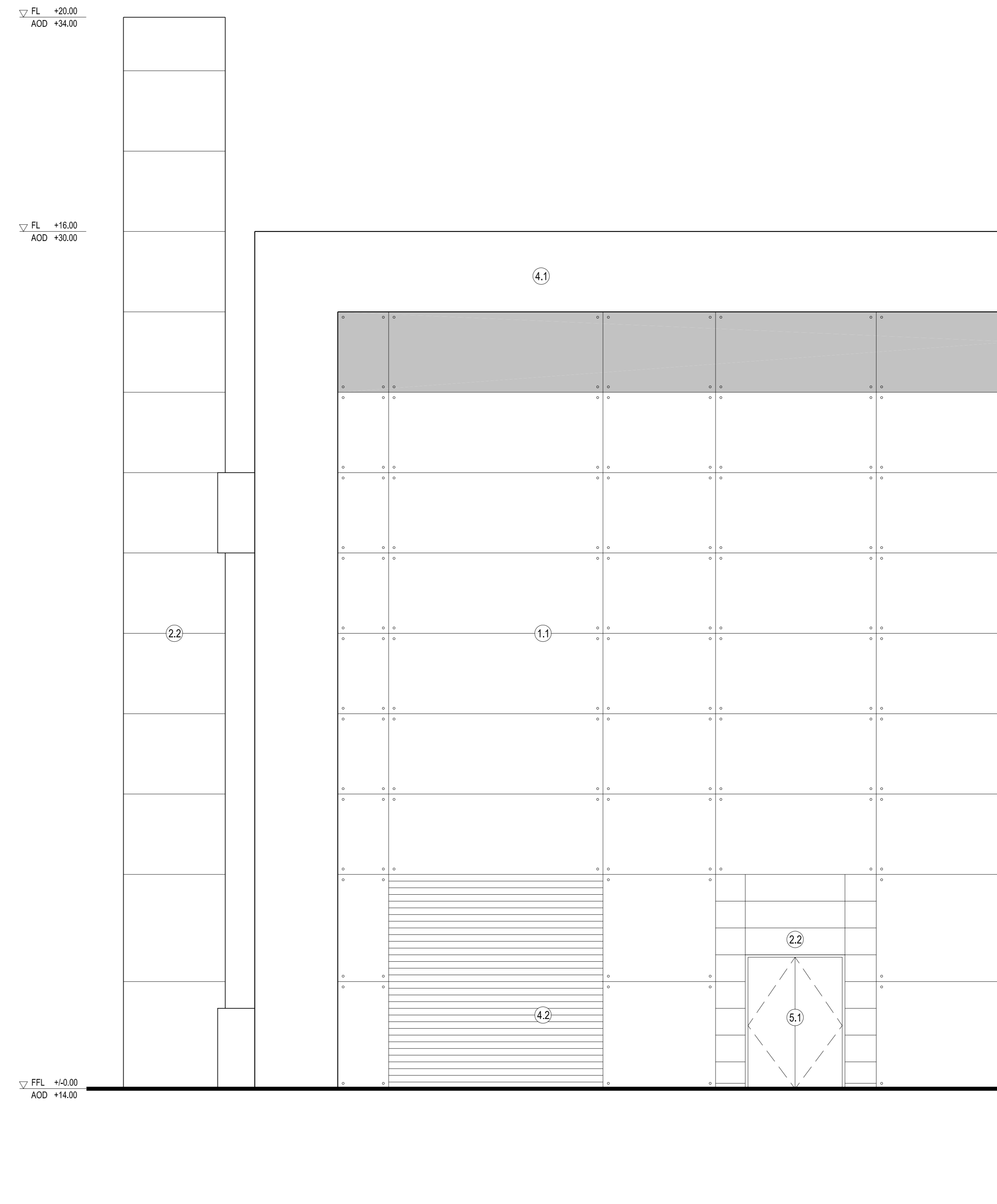
Hinkley Point C Site Key Plan - NTS

All internal layouts and uses are shown for illustrative purposes only and are not for determination

NOTES:



1 DETAIL - PART WEST ELEVATION
SCALE 1:50



2 DETAIL - PART SOUTH ELEVATION
SCALE 1:50

Materials Key:

Vertical Enclosure - Wall

- 1 Concrete / render finishes**
 - 1.1 In-situ concrete
 - 1.2 Pre-cast concrete
 - 1.3 Render finish
- 2 Cladding**
 - 2.1 Aluminium standing seam
 - 2.2 Aluminium panels
 - 2.3 Aluminium planks
 - 2.4 Profiled steel panels
 - 2.5 Flat steel panels
 - 2.6 Fibre cement cladding
 - 2.7 Glass reinforced plastic
- 3 Glazing / translucent materials**
 - 3.1 Cast glass c-channel
 - 3.2 Frameless glazing
 - 3.3 Framed glazing
 - 3.4 Opaque glazed spandrel panel
 - 3.5 Polycarbonate translucent cladding
- 4 External wall features**
 - 4.1 Aluminium trims, copings and casings
 - 4.2 Aluminium louvres
 - 4.3 Glass louvres
 - 4.4 Aluminium brise-soleil
 - 4.5 Glass brise-soleil
 - 4.6 Mesh expanded metal panels
 - 4.7 Fencing
 - 4.8 Barbed tape
 - 4.9 Retractable steel shutters

- 5 Doors**
 - 5.1 Metal door
 - 5.2 Metal louvre door
 - 5.3 Glazed door
 - 5.4 Access gates

- 6 Window / metalwork accessories**
 - 6.1 External fabric blinds
 - 6.2 Cavity venetian blinds
 - 6.3 Glazed balustrade
 - 6.4 Metal stairs and ladders

Horizontal Enclosure - Roof

- 7 Roofing**
 - 7.1 Sedum roof
 - 7.2 Ballast
 - 7.3 Standing seam roof
 - 7.4 Concrete roof
- 8 Roofing Accessories**
 - 8.1 Roof light
 - 8.2 Roof vents and hatches
 - 8.3 Metal cappings and copings
 - 8.4 Paving
 - 8.5 PVs and solar panels
 - 8.6 Timber decking

| REVISION | DATE | DRAWN | CHECKED | REASONS FOR REVISION COMMENTS | APPROVED |
|----------|-----------|-------|---------|-------------------------------|----------|
| 01 | SEPT 2011 | YJM | YJM | FOR IFC SUBMISSION | NWB |



EDF ENERGY
HINKLEY POINT C



Hinkley Point C Site Key Plan - NTS

DRAWING TITLE
Hinkley Point C Development Site
Intermediate Level Waste Interim Storage Facility

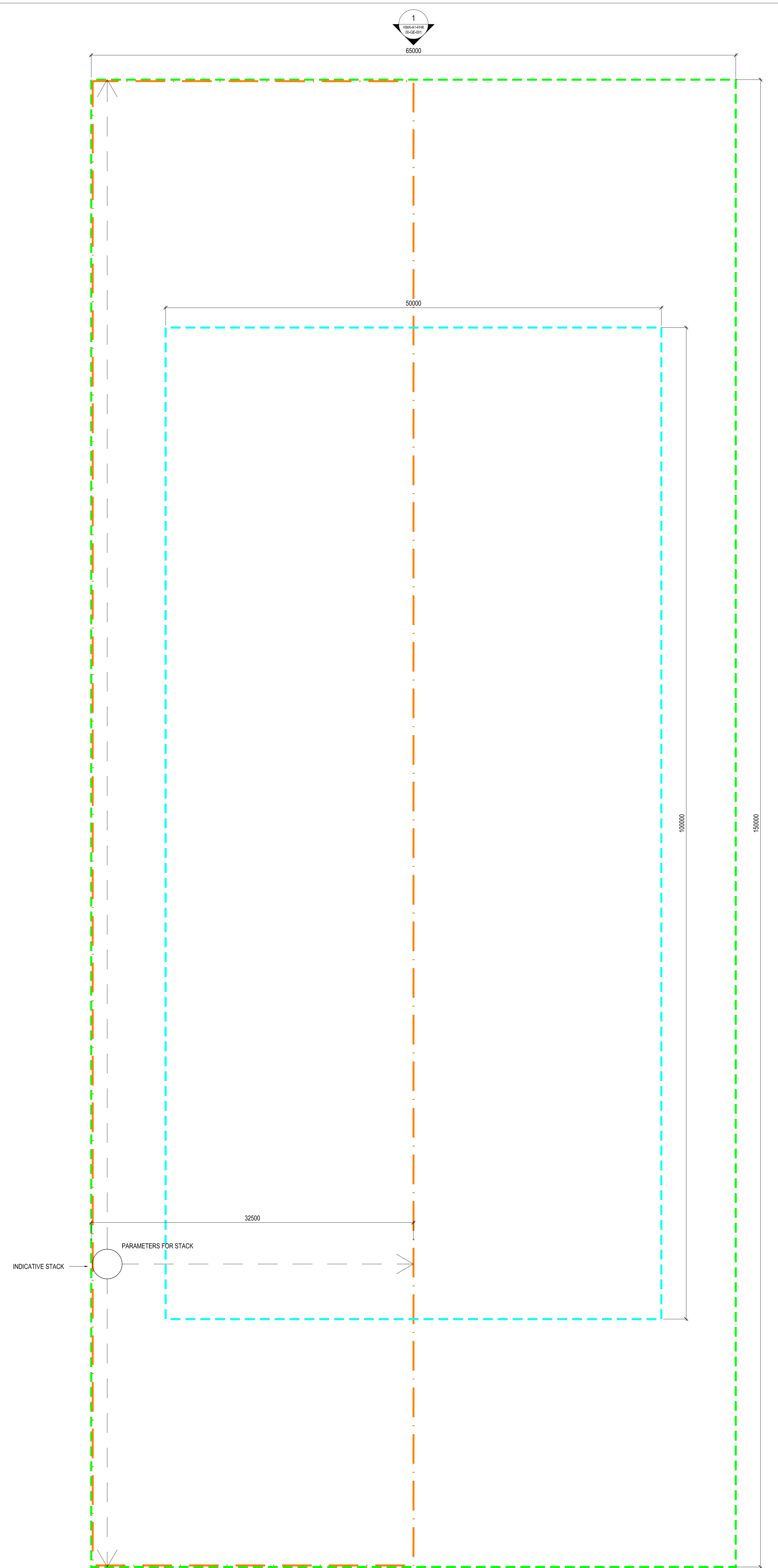
Part Elevation - Detail
Regulation 5(2)(o)

| PROJECT DRAWING REFERENCE NO. | REVISION | SCALE | DATE |
|-------------------------------|----------|-----------|-----------|
| HINK-A2-HHI-00-DT-001 | 01 | 1:50 @ A0 | SEPT 2011 |

DOCUMENT
Application Drawing - Detail (for Approval)

SCALE BAR

- DRAWING SECURITY CLASSIFICATION
- PROTECTIVE MARKING REQUIRED
 - NOT PROTECTIVELY MARKED



1 PLAN
SCALE 1:200

INTERNAL: DRAWING CLASSIFICATION: REFERENCE
HPC-GEN047-U0-HHK-DRW-000001

All internal layouts and uses are shown for illustrative purposes only and are not for determination

- NOTES:
- LEGEND:
- MAXIMUM OUTLINE PLAN, SECTION & ELEVATION
 - MINIMUM OUTLINE PLAN, SECTION & ELEVATION
 - STACK PARAMETER

| REV | DATE | BY | CHKD | REASON FOR REVISION COMMENTS | APPROVED |
|-----|-----------|-----|------|------------------------------|----------|
| 01 | SEPT 2011 | YJM | YJM | FOR EPC SUBMISSION | NWB |



HINKLEY POINT C

DRAWING TITLE
Hinkley Point C Development Site
Interim Spent Fuel Store

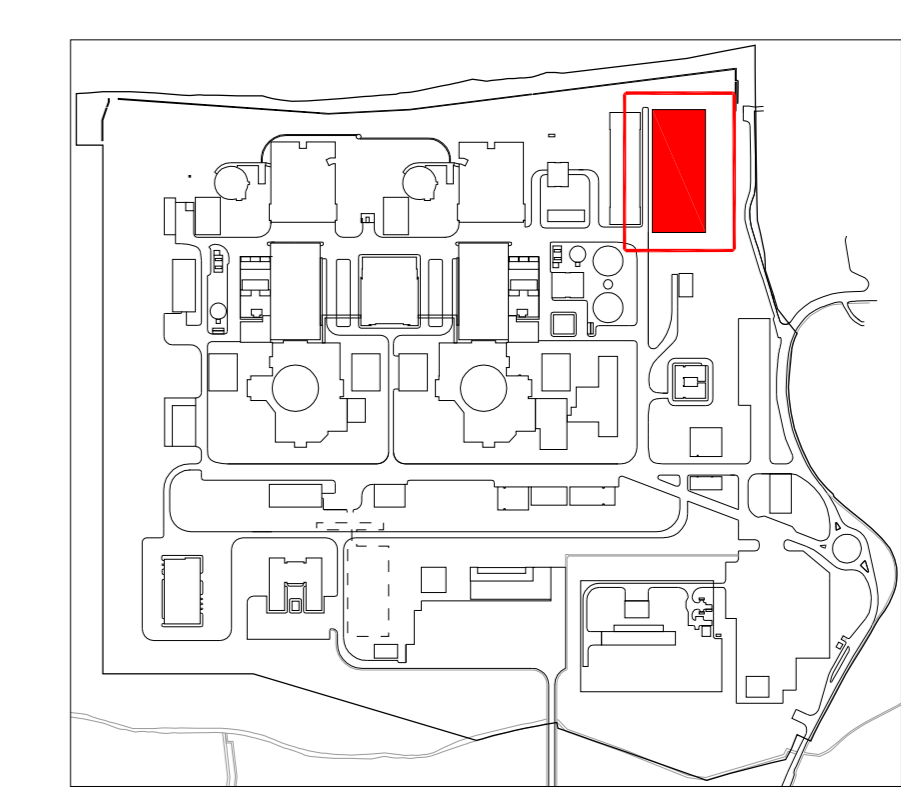
Plan
Regulation 5(2)(o)

| | | | |
|-------------------------------|----------|------------|-----------|
| PROJECT DRAWING REFERENCE NO. | REVISION | SCALE | DATE |
| HINK-A2-HHK-00-GP-000 | 01 | 1:200 @ A0 | SEPT 2011 |

DOCUMENT
Application Drawing - Parameters (for Approval)

SCALE BAR

- DRAWING SECURITY CLASSIFICATION
- PROTECTIVE MARKING REQUIRED
 - NOT PROTECTIVELY MARKED

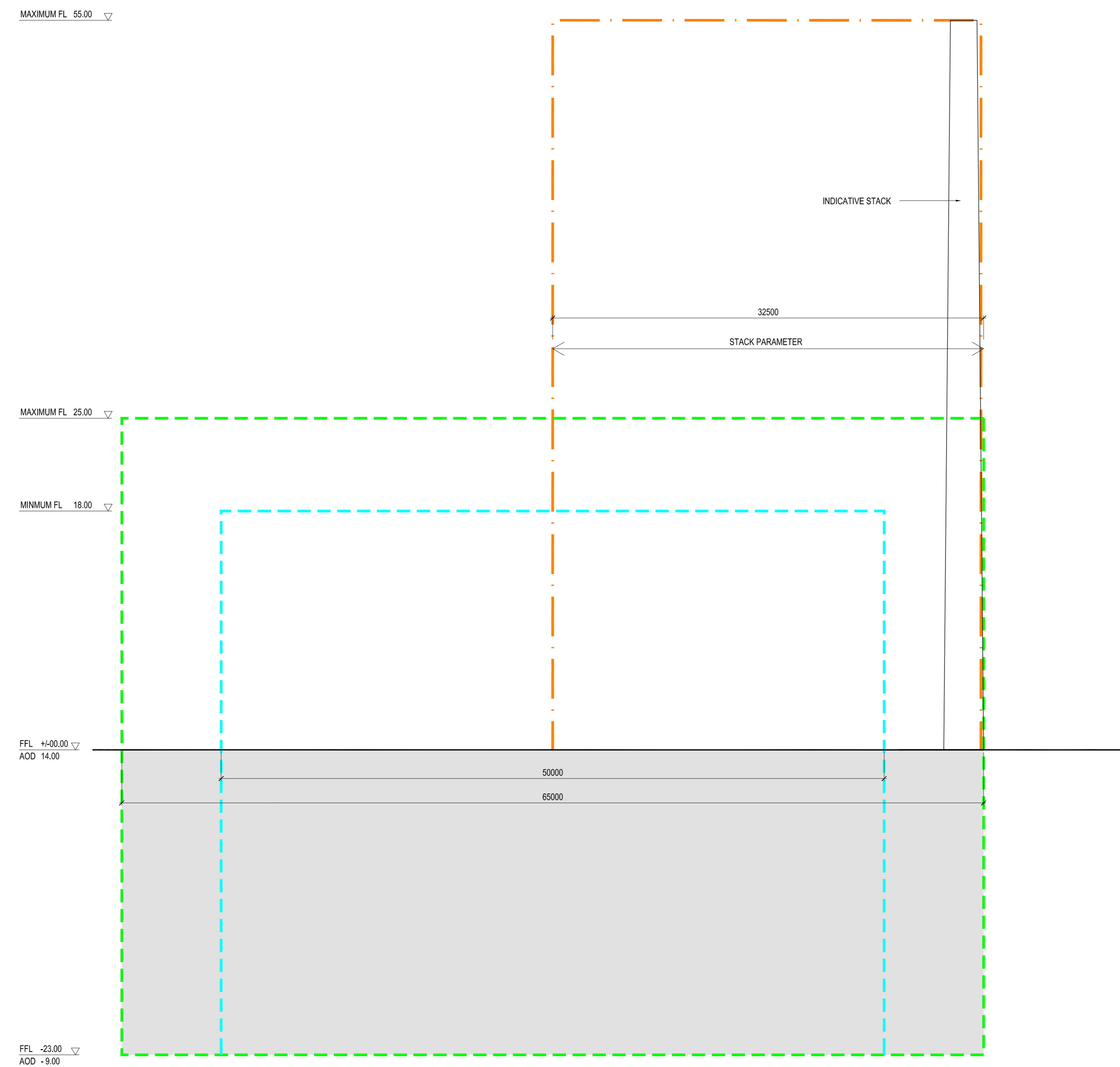


Hinkley Point C Site Key Plan - NTS

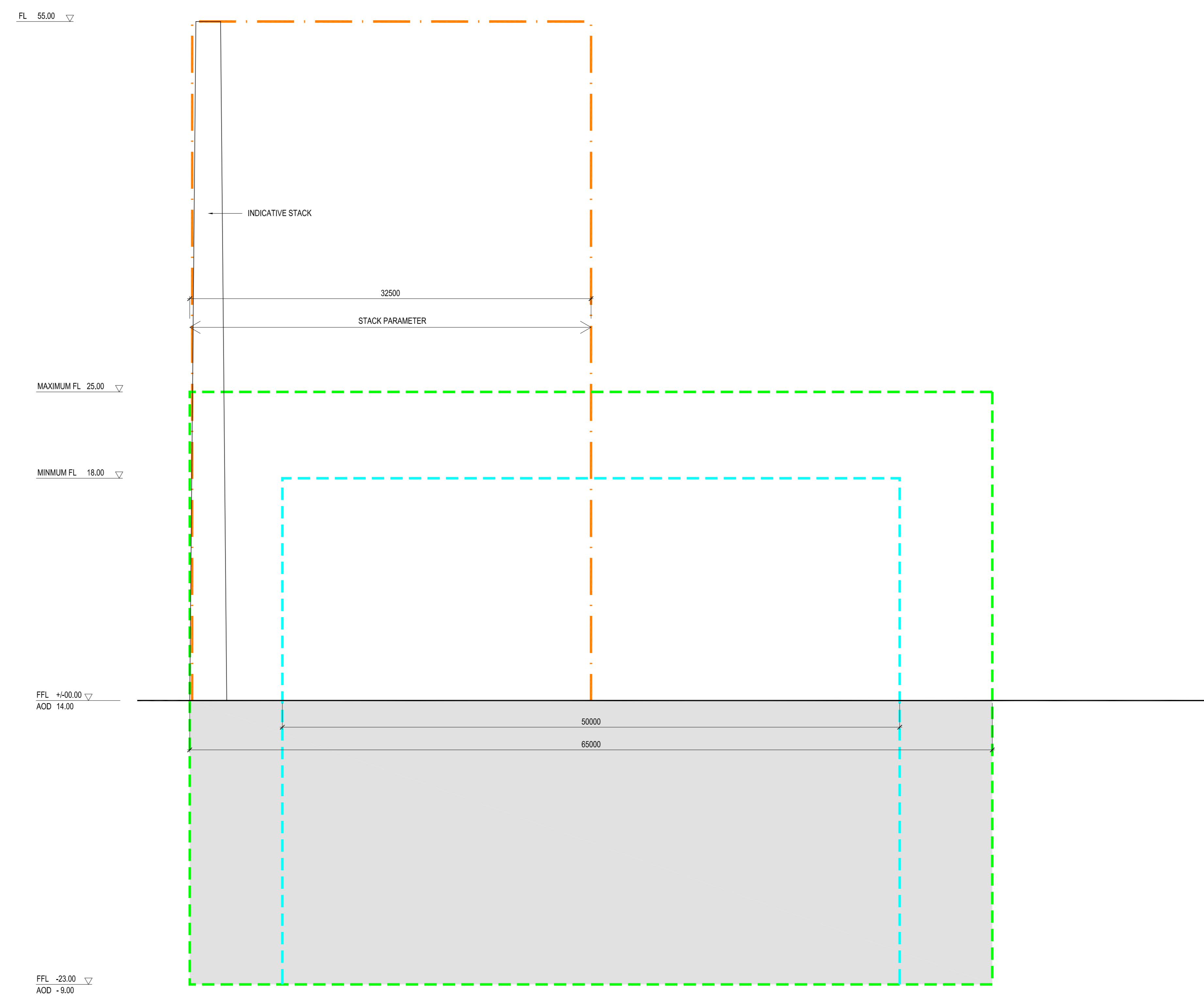
All internal layouts and uses are shown for illustrative purposes only and are not for determination

NOTES:

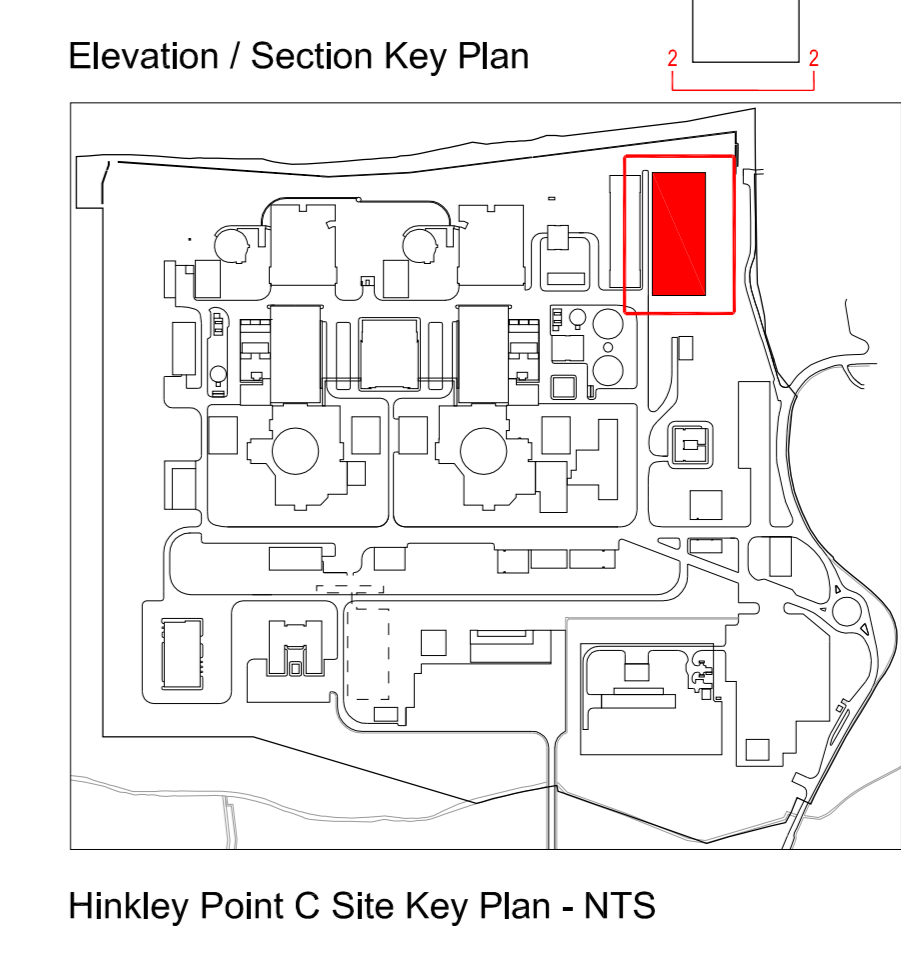
- LEGEND:
- MAXIMUM OUTLINE PLAN, SECTION & ELEVATION
 - MINIMUM OUTLINE PLAN, SECTION & ELEVATION
 - STACK PARAMETER



1 NORTH ELEVATION
 SCALE 1:200



2 SOUTH ELEVATION
 SCALE 1:200



| REVISION | DATE | DRAWN | CHECKED | REASON FOR REVISION COMMENTS | APPROVED |
|----------|-----------|-------|---------|------------------------------|----------|
| 01 | SEPT 2011 | YJM | YJM | FOR IFC SUBMISSION | NWB |



HINKLEY POINT C

DRAWING TITLE
 Hinkley Point C Development Site
 Interim Spent Fuel Store

North & South Elevations
 Regulation 5(2)(o)

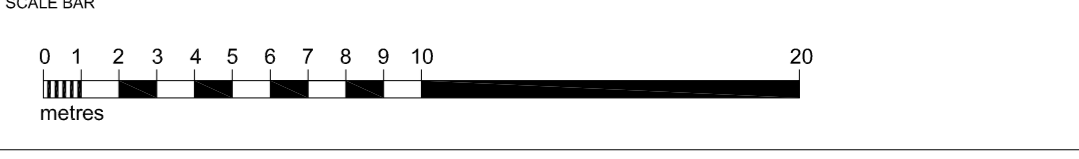
PROJECT DRAWING REFERENCE NO.
 HINK-A2-HHK-00-GE-001

REVISION
 01

SCALE
 1:200 @ A0

DATE
 SEPT 2011

DOCUMENT
 Application Drawing - Parameters (for Approval)

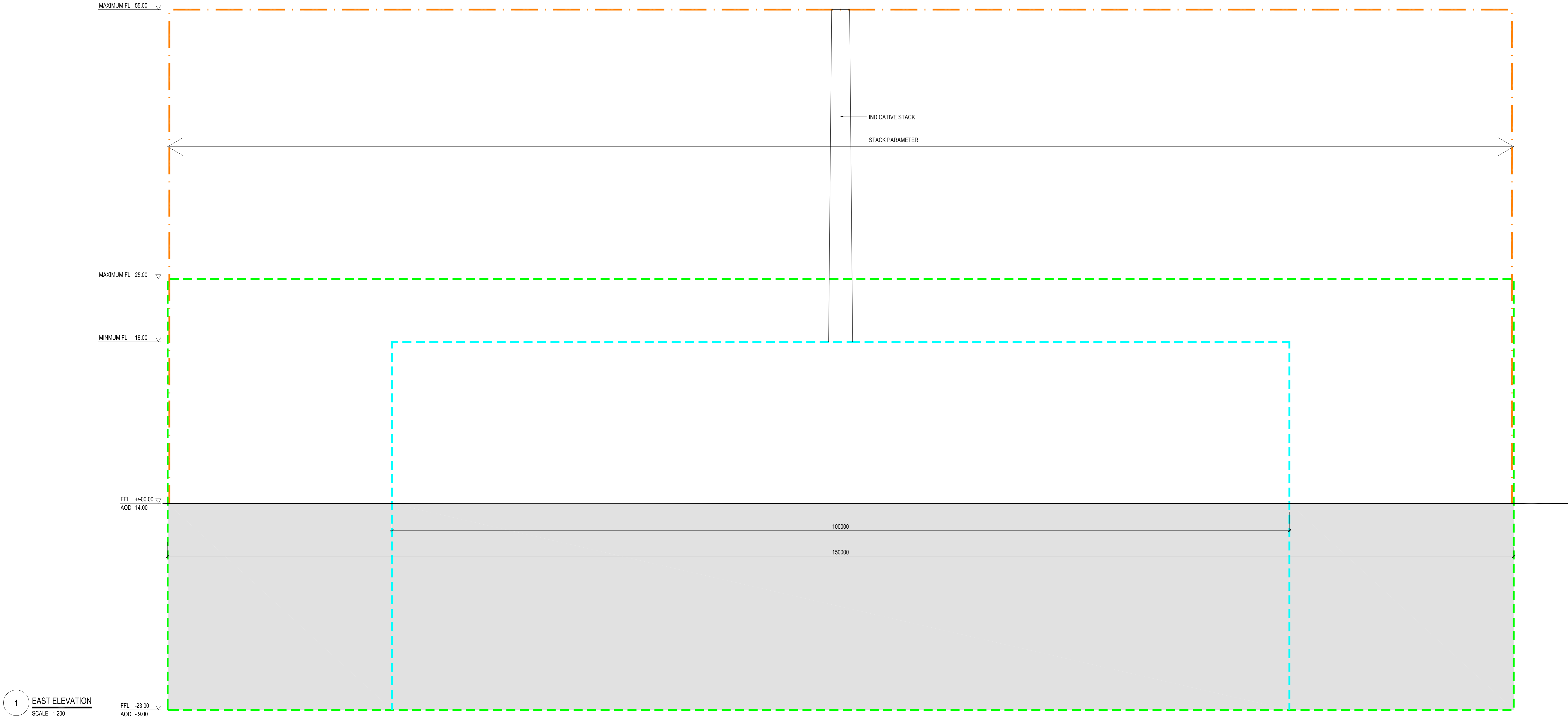


- DRAWING SECURITY CLASSIFICATION
- PROTECTIVE MARKING REQUIRED
 - NOT PROTECTIVELY MARKED

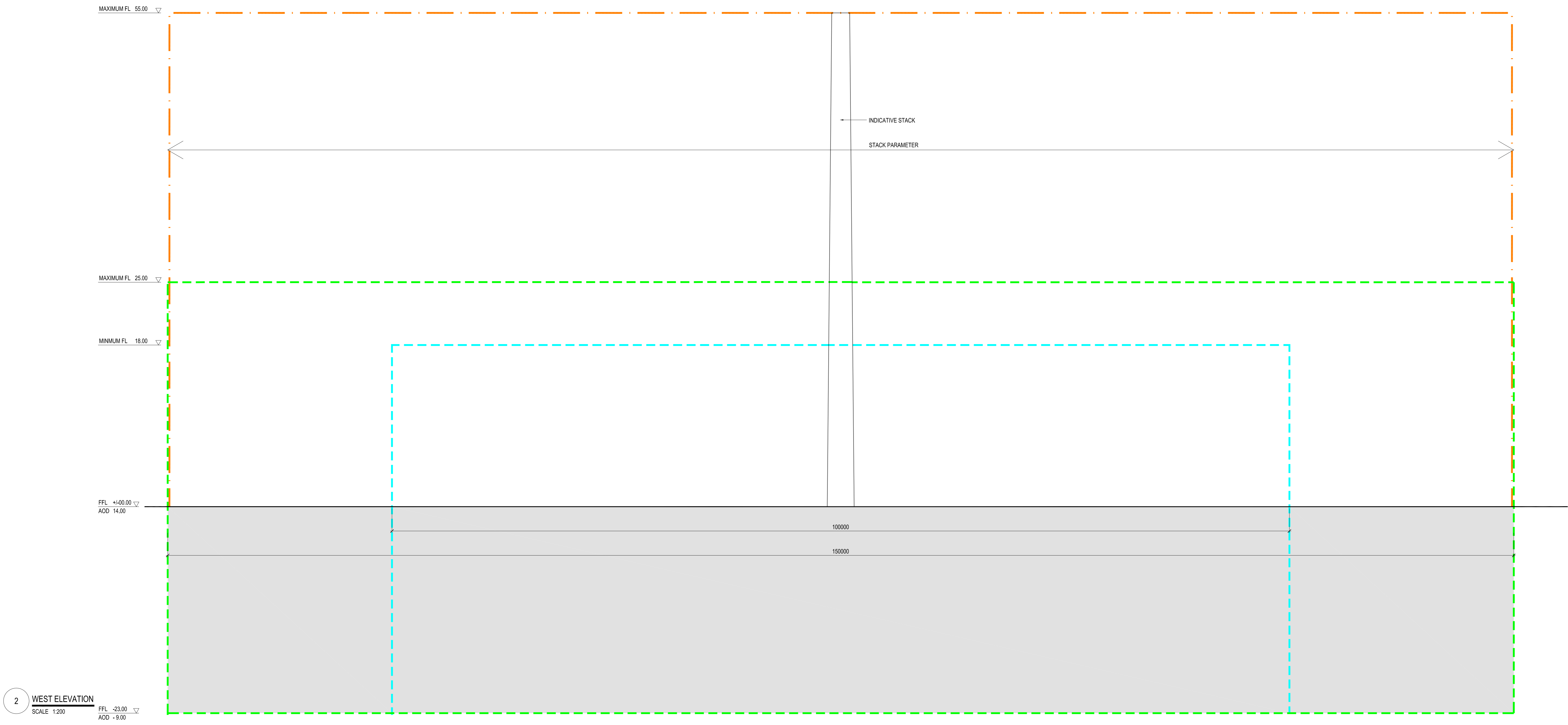
All internal layouts and uses are shown for illustrative purposes only and are not for determination

NOTES:

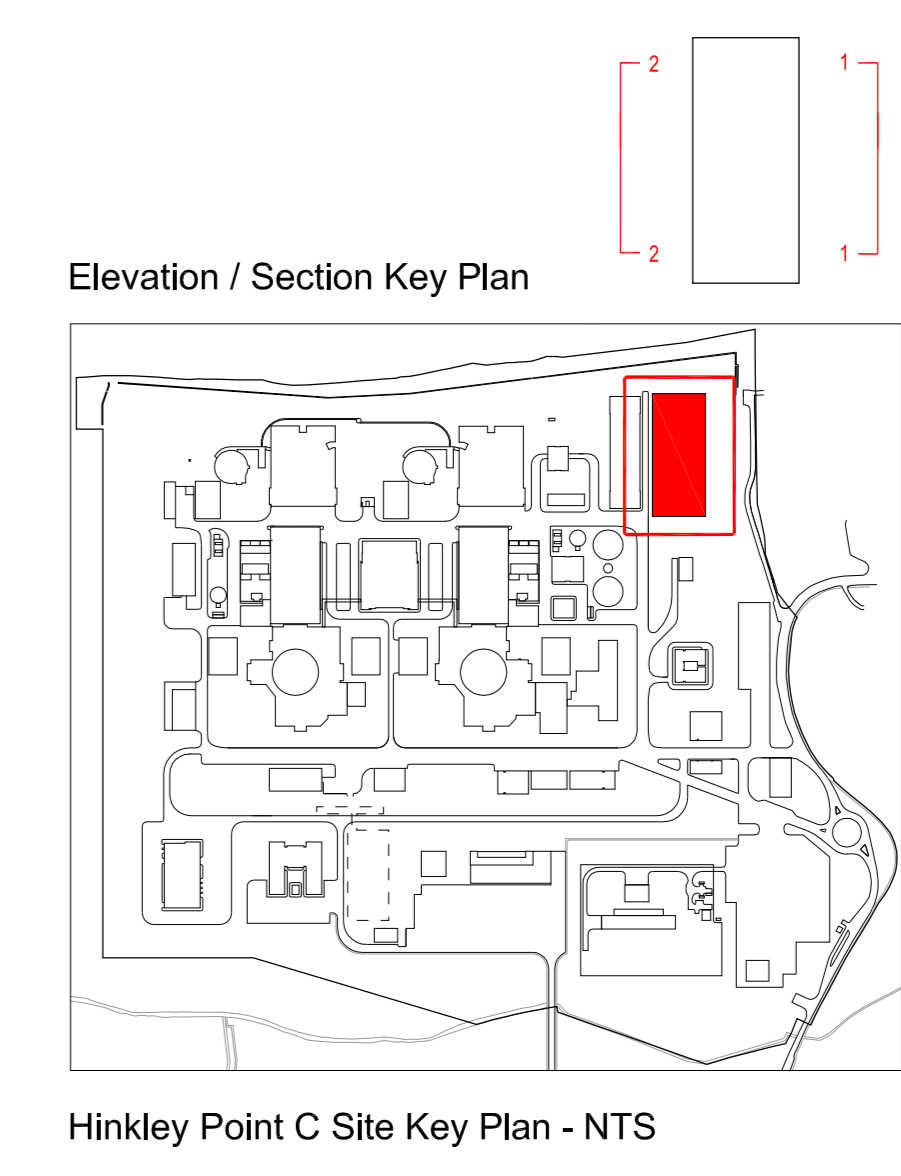
- LEGEND:
- - - MAXIMUM OUTLINE PLAN, SECTION & ELEVATION
 - - - MINIMUM OUTLINE PLAN, SECTION & ELEVATION
 - - - STACK PARAMETER



1 EAST ELEVATION
SCALE 1:200



2 WEST ELEVATION
SCALE 1:200



| REV | DATE | BY | CHKD | REASON FOR REVISION | APPROVED |
|-----|-----------|-----|------|---------------------|----------|
| 01 | SEPT 2011 | YJM | YJM | FOR IFC SUBMISSION | NWB |



HINKLEY POINT C

DRAWING TITLE
Hinkley Point C Development Site
Interim Spent Fuel Store

East & West Elevations
Regulation 5(2)(o)

| | | | |
|-------------------------------|----------|------------|-----------|
| PROJECT DRAWING REFERENCE NO. | REVISION | SCALE | DATE |
| HINK-A2-HHK-00-GE-002 | 01 | 1:200 @ A0 | SEPT 2011 |

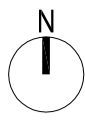
DOCUMENT
Application Drawing - Parameters (for Approval)

SCALE BAR
0 1 2 3 4 5 6 7 8 9 10 20
METERS

DRAWING SECURITY CLASSIFICATION

PROTECTIVE MARKING REQUIRED

NOT PROTECTIVELY MARKED



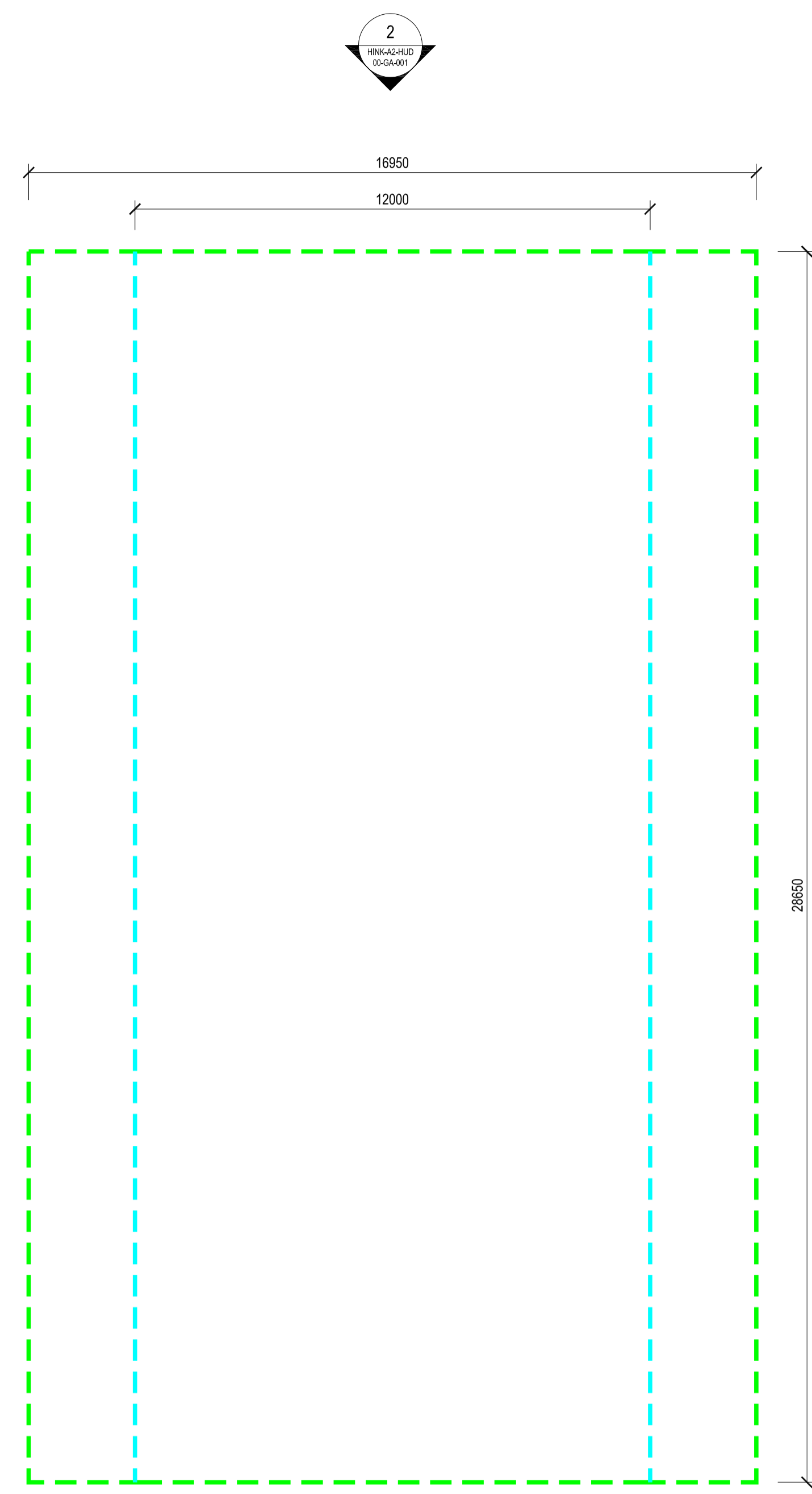
All internal layouts and uses are shown for illustrative purposes only and are not for determination

NOTES:

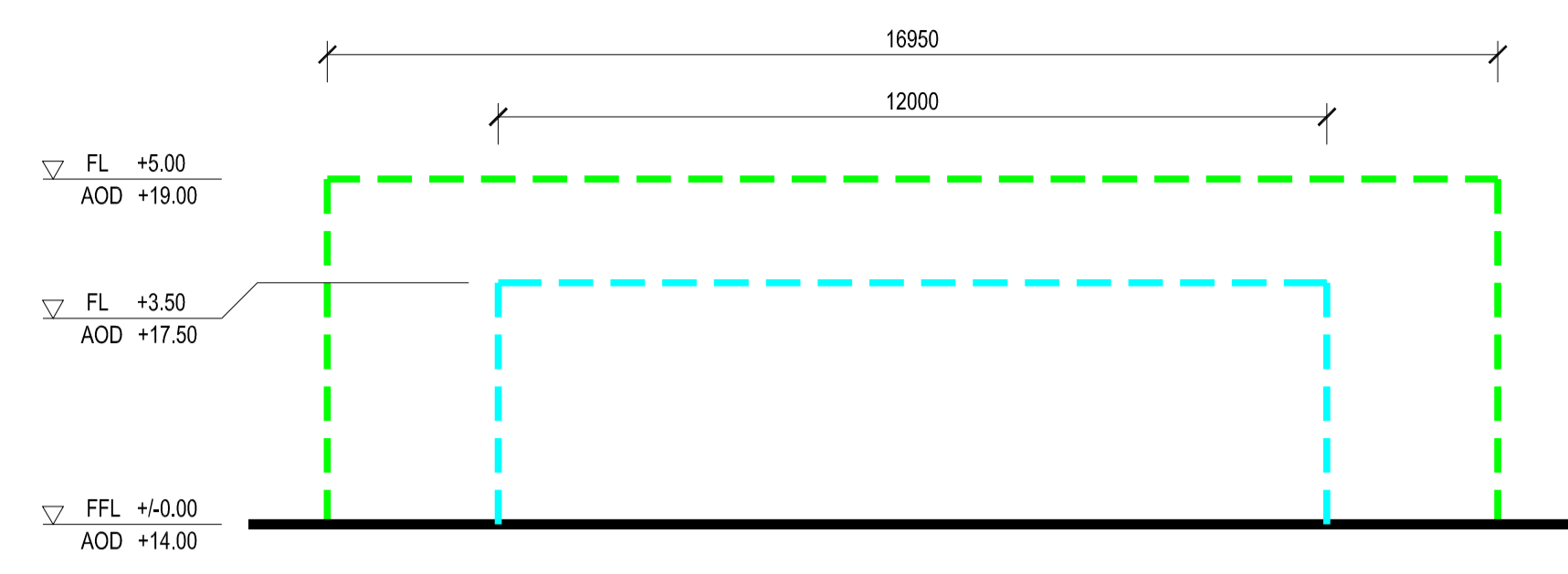
Building height excludes security barbed tape

LEGEND

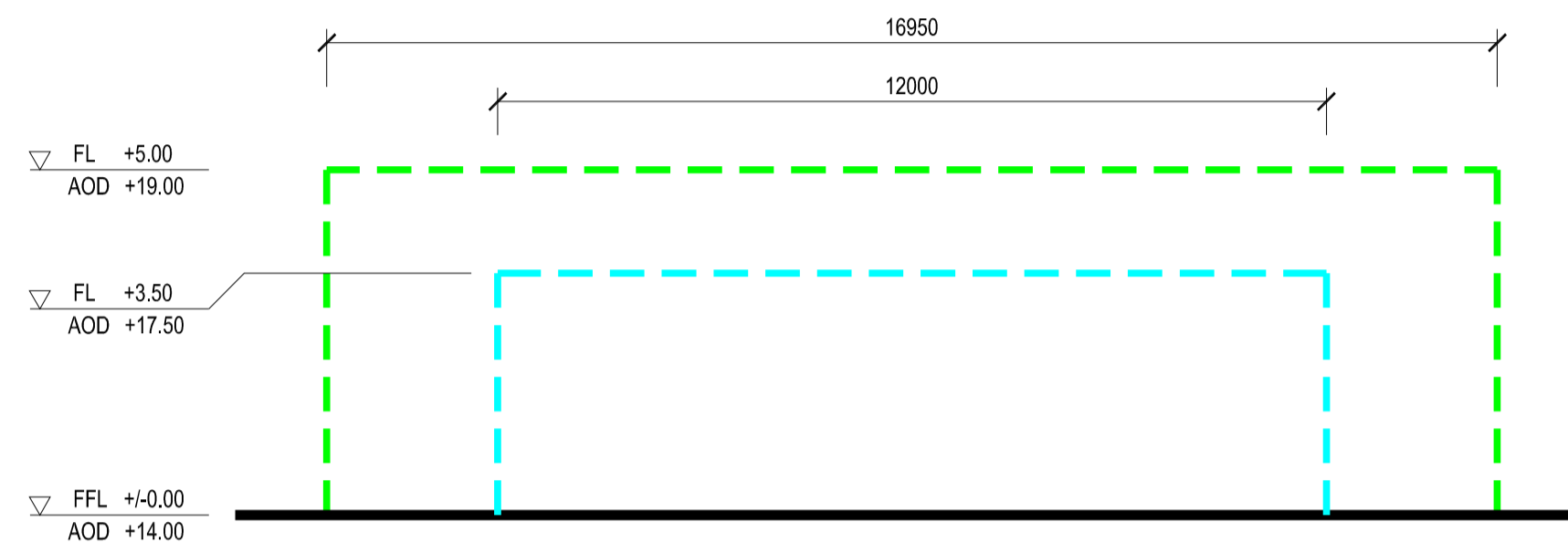
- MAXIMUM OUTLINE PLAN, SECTION & ELEVATION
- MINIMUM OUTLINE PLAN, SECTION & ELEVATION



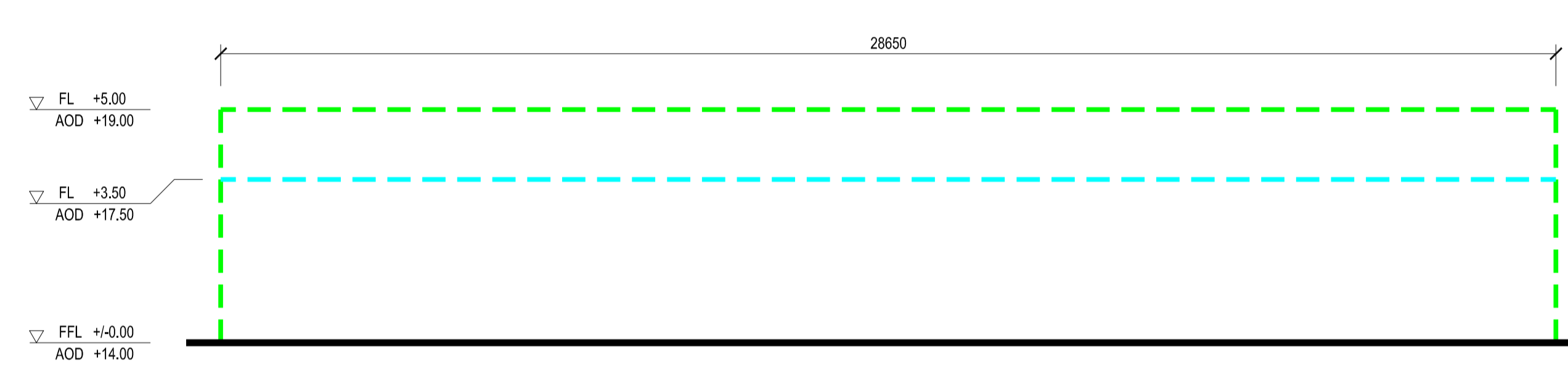
1 PLAN
SCALE 1:100



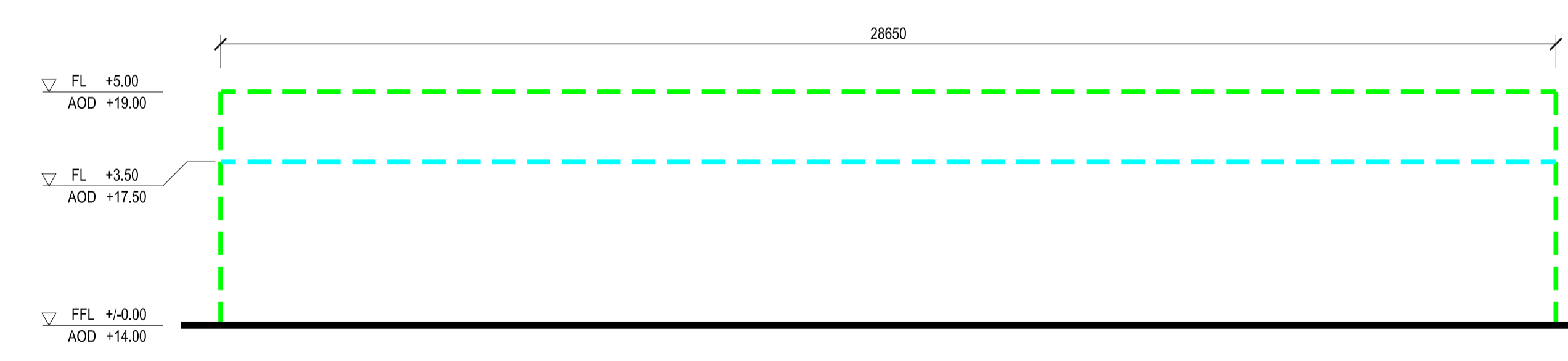
2 NORTH ELEVATION
SCALE 1:100



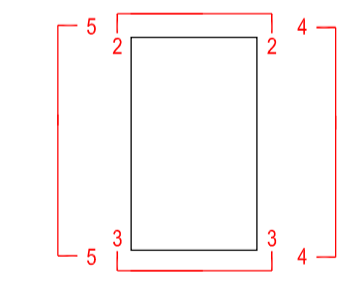
3 SOUTH ELEVATION
SCALE 1:100



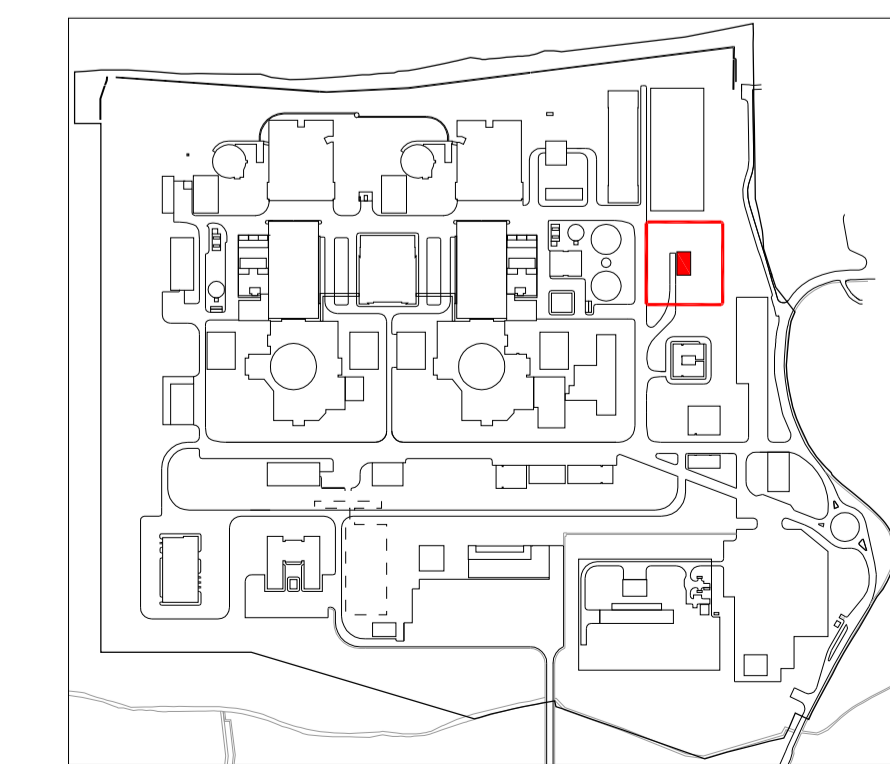
4 EAST ELEVATION
SCALE 1:100



5 WEST ELEVATION
SCALE 1:100



Elevation / Section Key Plan



Hinkley Point C Site Key Plan - NTS

| REVISION | DATE | DRAWN | CHECKED | FOR IPC SUBMISSION | NNB |
|----------|-----------|-------|---------|-------------------------------|----------|
| 01 | SEPT 2011 | YRM | YRM | FOR IPC SUBMISSION | NNB |
| | | | | REASONS FOR REVISION COMMENTS | APPROVED |



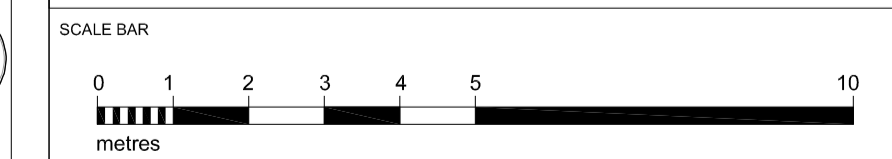
HINKLEY POINT C

DRAWING TITLE
Hinkley Point C Development Site
Access Control Building

Plan & Elevations
Regulation 5(2)(o)

| PROJECT DRAWING REFERENCE NO. | REVISION | SCALE | DATE |
|-------------------------------|----------|------------|-----------|
| HINK-A2-HUD-00-GA-001 | 01 | 1:100 @ A1 | SEPT 2011 |

DOCUMENT
Application Drawing - Parameters (for Approval)



- DRAWING SECURITY CLASSIFICATION
- PROTECTIVE MARKING REQUIRED
 - NOT PROTECTIVELY MARKED