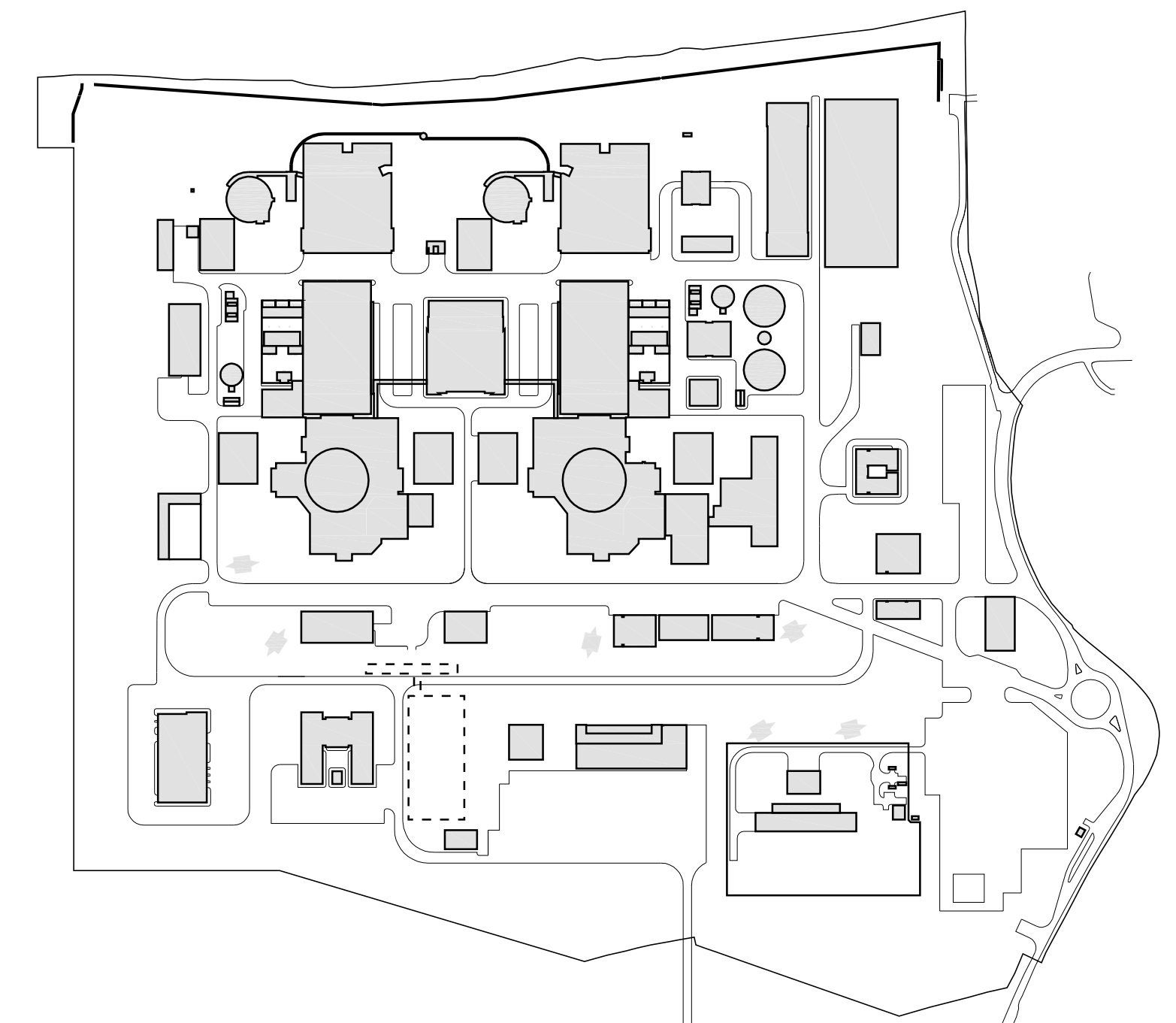


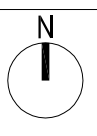


HINKLEY POINT C



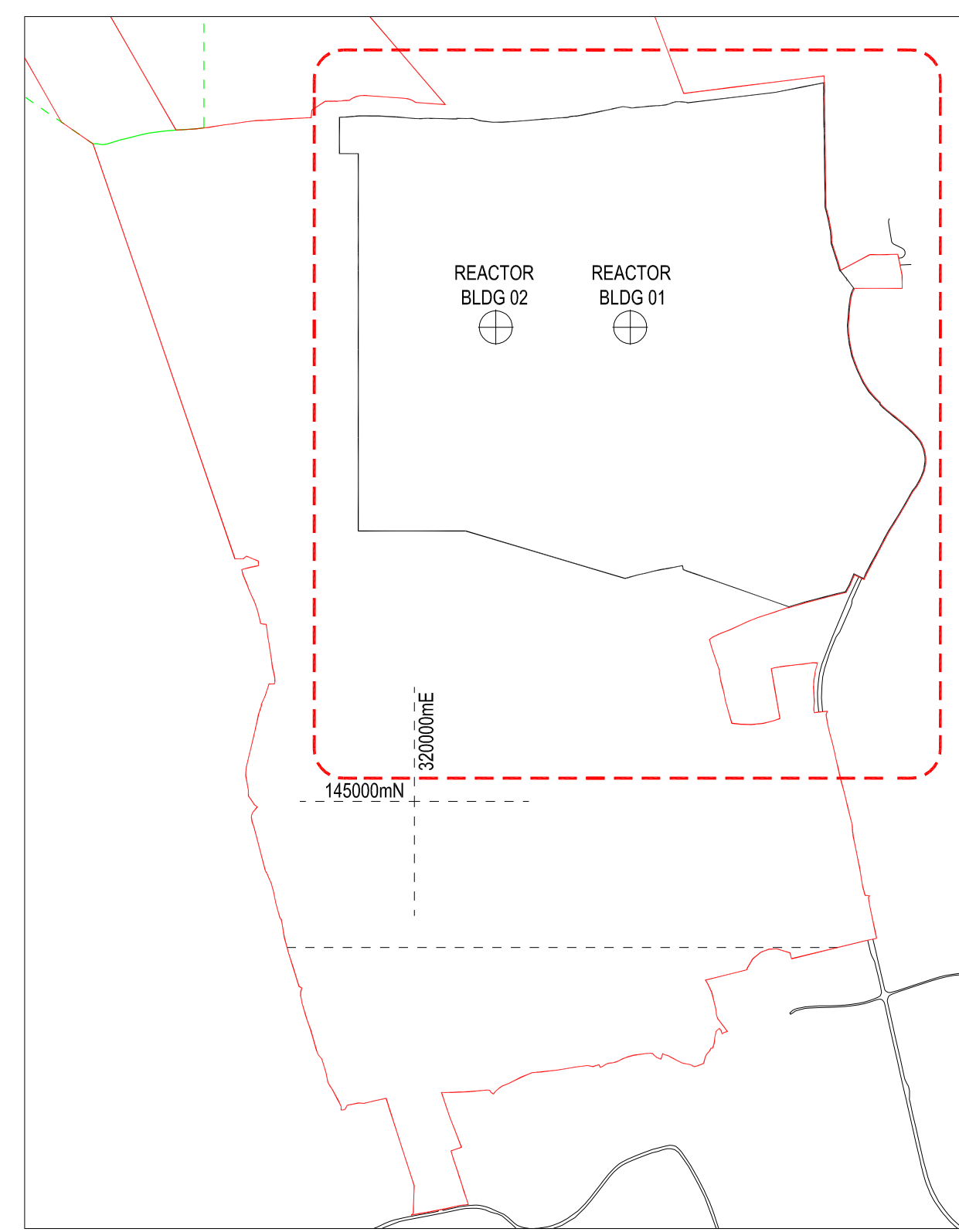
HPC DEVELOPMENT SITE - SITE PLAN (DRAWINGS FOR APPROVAL)





EXISTING HINKLEY POINT
POWER STATION COMPLEX

1 SITE LAYOUT PLAN
SCALE 1:2500



2 HPC PERMANENT DEVELOPMENT SITE LOCATION PLAN
SCALE 1:10 000

INTERNAL BUSINESS COLLABORATOR REFERENCE
HPC-GEN047-U0-000-DRW-000001

NUCLEAR ISLAND	35 CHEMICAL PRODUCTS STORAGE
01 REACTOR BUILDING	36 SEWAGE TREATMENT PLANT
02 FUEL BUILDING	37 CONVENTIONAL ISLAND WATER STORAGE TANK
03 SAFEGUARD BUILDING	38 NUCLEAR ISLAND WATER STORAGE TANK
04 SAFEGUARD BUILDINGS	
05 NUCLEAR AUXILIARY BUILDING	FUEL & WASTE STORAGE
06 ACCESS TOWER	39 INTERIM SPENT FUEL STORE
07 FUEL BUILDING HALL	40 ACCESS CONTROL BUILDING
08 BORON STORAGE	41 INTERMEDIATE LEVEL WASTE INTERIM STORAGE FACILITY
09 RADIOACTIVE WASTE STORAGE BUILDING	
10 RADIOACTIVE WASTE PROCESS BUILDING	ANCILLARY OFFICE & STORAGE
11 RADIOACTIVE WASTE TREATMENT BUILDING (UNIT 2)	42 MAIN ACCESS CONTROL BUILDING
12 HOT LAUNDRY	43 ENTRY RELAY BUILDING
13 HOT WORKSHOP, HOT WAREHOUSE, FACILITIES FOR DECONTAMINATION	44 OFF-SITE VEHICLE SEARCH AREA
14 EFFLUENT TANKS	45 AUXILIARY ADMINISTRATION CENTRE
15 EMERGENCY DIESEL GENERATORS	46 MEDICAL CENTRE
	47 EDF SITE OFFICES
CONVENTIONAL ISLAND	48 GARAGE FOR HANDLING FACILITIES
16 TURBINE HALL & SKYBRIDGES	49 OIL & GREASE STORAGE + OIL ANCILLARY BUILDING
17 NON-CLASSIFIED ELECTRICAL BUILDING	50 AREVA WAREHOUSE
18 GAS INSULATED SWITCH GEAR	51 RAW WATER AND POTABLE WATER SUPPLY
19 MAIN TRANSFORMER	52 METEOROLOGICAL STATION
20 UNIT TRANSFORMER	53 OUTAGE ACCESS CONTROL BUILDING
21 AUXILIARY TRANSFORMER	54 CONTAMINATED TOOLS STORAGE
22 HYDRAZINE & AMMONIA STORAGE	55 CONVENTIONAL WASTE STORAGE
23 AUXILIARY FEEDWATER STORAGE	56 TRANSIT AREA FOR VERY LOW LEVEL WASTE AND LOW LEVEL WASTE
OPERATIONS	PUBLIC & TRAINING
24 OPERATIONAL SERVICE CENTRE	57 SIMULATOR BUILDING / TRAINING CENTRE
	58 PUBLIC INFORMATION CENTRE
COOLING WATER PUMPHOUSE & ASSOCIATED BUILDINGS	NATIONAL GRID SUBSTATION
25 COOLING WATER PUMPHOUSE	59 NATIONAL GRID SUBSTATION
26 FOREBAY	
27 OUTFALL POND (SURGE CHAMBER)	OTHER SITE STRUCTURES
28 FILTERING DEBRIS RECOVERY PIT	60 HELIPAD
29 FIRE-FIGHTING WATER BUILDING	61 SEA WALL (INCORPORATING COASTAL FOOTPATH)
	62 CAR PARK
REMAINING BALANCE OF PLANT & OTHER PLANT	63 METEOROLOGICAL STATION MAST
30 ATTENUATION POND	64 EDF ENERGY PYLONS
31 DEMINERALISATION STATION	
32 AUXILIARY BOILERS	
33 HYDROGEN STORAGE	
34 OXYGEN STORAGE	

DRAWING SYMBOLS & LEGEND

	HINKLEY POINT C DEVELOPMENT SITE BOUNDARY (DCO)		PYLONS & LINES - EDF ENERGY STANDARD
	HINKLEY POINT C PERMANENT DEVELOPMENT SITE BOUNDARY		RAILWAY TRACKS
	TEMPORARY JETTY SEAWARD HARBOUR LIMITS		FENCES
	BUILDINGS / STRUCTURES		PARAMETER BUILDINGS
	NATIONAL GRID 400kV PYLONS & LINES (SEE CAVEAT BELOW)		

REACTOR CENTRELINE OS CO-ORDINATES

UNIT 1	320369,3912mE	NOTE:	ALL CO-ORDINATES ARE IN METRES AND ARE BASED ON THE ORDINANCE SURVEY NATIONAL GRID
UNIT 2	145812,1430mN		
	320139,3912mE		
	145812,1430mN		

REVISION	DATE	DRAWN	CHECKED	FOR IPC SUBMISSION	REASONS FOR REVISION COMMENTS	APPROVED
01	SEPT 2011	YRM	YRM			NNB



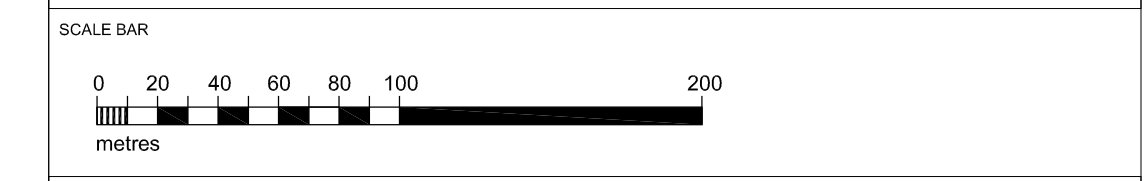
HINKLEY POINT C

DRAWING TITLE
Hinkley Point C Development Site
HPC Permanent Development Site

Site Layout Plan (Operational)
Regulation 5(2)(o)

PROJECT DRAWING REFERENCE NO.	REVISION	SCALE	DATE
HINK-A1-SL-00-GA-010	01	1:2500 @ A1	SEPT 2011

DOCUMENT
Application Drawing - Detail (for Approval)



<input type="checkbox"/>	PROTECTIVE MARKING REQUIRED
<input checked="" type="checkbox"/>	NOT PROTECTIVELY MARKED



INTERNAL NUMBERING CONVENTION FOR REFERENCE
HPC-GEN047-U0-000-DRW-000003

Ref:	Building	Siting Parameter
1	Nuclear Island	
2	Reactor Building	
3	Fuel Building	
4	Safeguard Building	
5	Nuclear Auxiliary Building	
6	Access Tower	
7	Post Building Hall	
8	Steam Storage	
9	Radioactive Waste Storage Building	
10	Radioactive Waste Process Building	
11	Radioactive Waste Treatment Building (Unit 2)	
12	HOT Laundry	
13	HOT Workshop, Hot Warehouses, Facilities For Decontamination	
14	Effluent Tanks	+/- 3m south
15	Emergency Diesel Generators	+/- 5m in any direction
Conventional Island		
16	Turbine Hall & Sky Bridges	
17	Non-Classified Electrical Building	
18	Gas Insulated Switchgear	
19	Main Transformer	
20	Line Transformer	
21	Auxiliary Transformer	
22	Hydraulic & Ammonia Storage	+/- 3m south
23	Auxiliary Feed Water Storage	+/- 5m in any direction
Operations		
24	Operational Service Centre	+/- 3m in any direction
Cooling Water Pump House & Associated Buildings		
25	Cooling Water Pump House	
26	Fluestack	
27	Outfall Pond (Sludge Chambers)	
28	Filtration/Debris Recovery Pit	
29	Fine-Filtering Water Building	+/- 5m in any direction
Remaining Of Plant & Other Plant		
30	Attenuation Pond	
31	Commissioning Station	
32	Auxiliary Boiler	
33	Hydrogen Storage	
34	Oxygen Storage	
35	Chemical Products Storage	
36	Sewage Treatment Plant	
37	Conventional Island Water Storage Tank	+/- 5m in any direction
38	Nuclear Island Water Storage Tank	+/- 5m in any direction
39	Interim Spent Fuel Store	+/- 5m in any direction
40	Access Control Building	+/- 5m in any direction
41	Intermediate Level Waste Interim Storage Facility	+/- 5m in any direction
Auxiliary, Office & Storage		
42	Main Access Control Building	+/- 5m in any direction
43	Entry Relay Building	
44	Off-Site Vehicle Search Area	
45	Auxiliary Administration Centre	
46	Medical Centre	
47	EDF Site Office	
48	Garage For Handling Facilities	
49	Oil & Grease Storage - Oil Auxiliary Building	
50	Area Warehouse	
51	Raw Water And Potable Water Supply	
52	Meteorological Station	
53	Change Access Control Building	
54	Contaminated Tools Storage	
55	Conventional Waste Storage	
56	Transfer Area For Very Low Level Waste & Low Level And Low Level Waste	+/- 5m in any direction
Public & Training		
57	Simulation Building / Training Centre	
58	Public Information Centre	+/- 5m in any direction
National Grid Substation		
59	National Grid Substation	+/- 5m in any direction
Other Site Structures		
60	Helipad	As Indicated on Landscape Scheme
61	Sea Wall (Incorporating Coastal Footpath)	n/a
62	Car Park	As Indicated on Landscape Scheme
63	Meteorological Station Mast	+/- 5m in an east, west and south direction and 20m in a north direction
64	EDF Energy Pylons	+/- 30m in any direction
65	Service Access Buildings	+/- 10m in any direction

DRAWING SYMBOLS & LEGEND

	MAXIMUM BUILDING FOOTPRINT		PYLONS & LINES - EDF ENERGY STANDARD
	MINIMUM BUILDING FOOTPRINT		RAILWAY TRACKS
	PARAMETER PLAN BUILDINGS		FENCES
	MAXIMUM BUILDING HEIGHT PARAMETER		HINKLEY POINT C PERMANENT DEVELOPMENT SITE BOUNDARY
	MINIMUM BUILDING HEIGHT PARAMETER		

THE MAXIMUM BUILDING HEIGHT FOR BUILDINGS / STRUCTURES COMPRISES THE ROOF HEIGHT STATED ON THIS DRAWING AND AN ADDITIONAL 3M TO TAKE ACCOUNT OF ANY ADDITIONAL ROOF PLANT OR MACHINERY THAT MAY PROVIDE ABOVE THE STATED ROOF HEIGHT. (SEE HPC DESIGN AND ACCESS STATEMENT, CHAPTER 6 FOR DETAILS).

REV	DATE	BY	CHKD	FOR IFC SUBMISSION	REVISION	SCALE	DATE	APPROVED
01	SEPT 2011	YHM	YHM	FOR IFC SUBMISSION				NWB

EDF ENERGY
HINKLEY POINT C

Hinkley Point C Development Site
HPC Permanent Development Site

HPC Site Parameter Plan
Regulation 5(2)(o)

PROJECT DRAWING REFERENCE NO:
HINK-A1-SL-00-GA-002

REVISION: **01** SCALE: **1:1000 @ A0** DATE: **SEPT 2011**

DOCUMENT:
Application Drawing - Parameters (for Approval)

SCALE BAR:
 0 10 20 30 40 50 60 70 80 90 100
 metres

DRAWING SECURITY CLASSIFICATION:
 PROTECTIVE MARKING REQUIRED
 NOT PROTECTIVELY MARKED